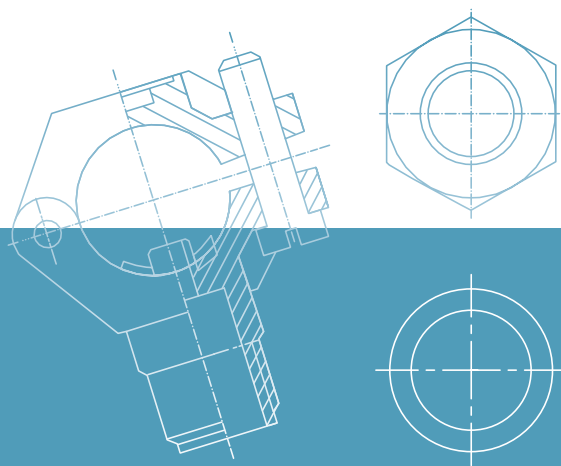


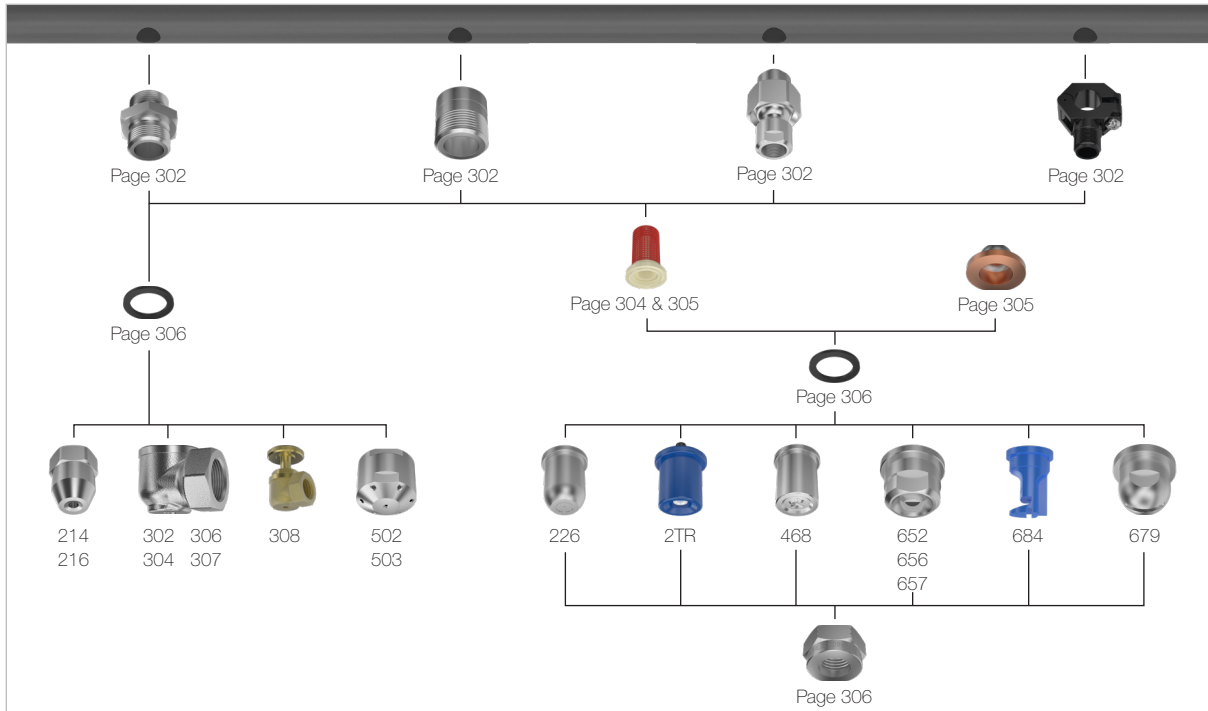
# » ACCESSORIES



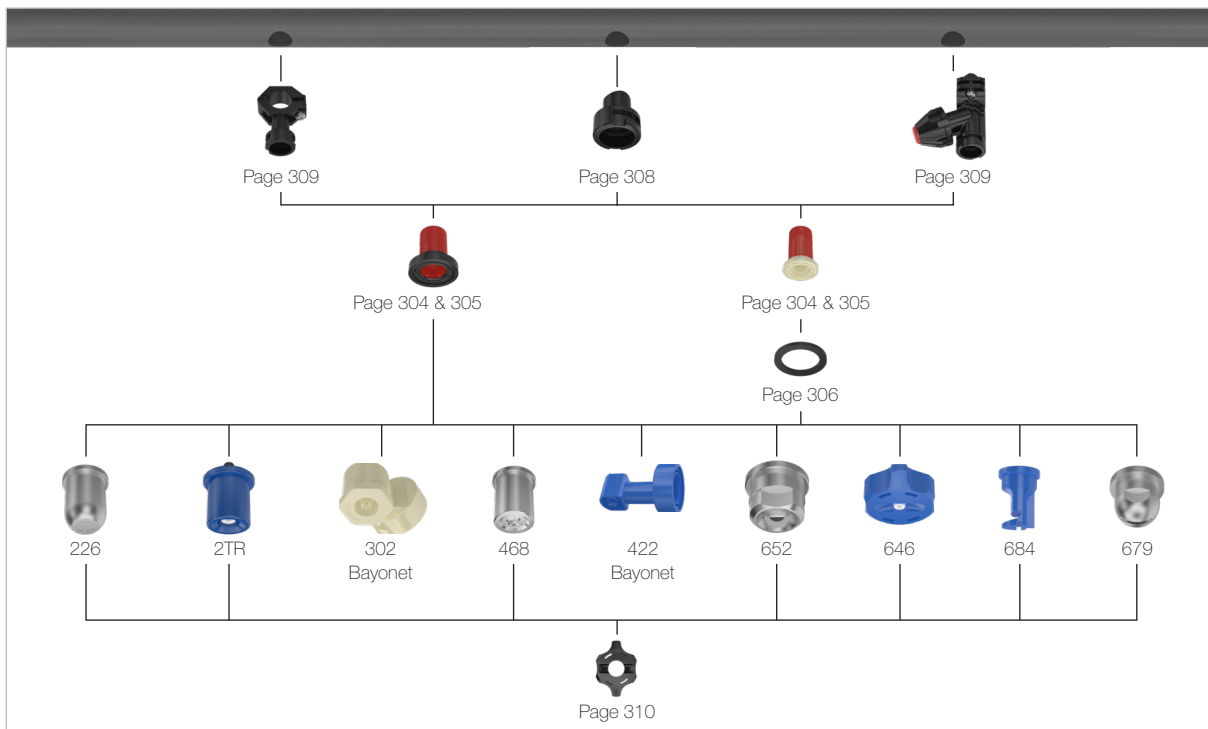
# NOZZLE FASTENING ASSEMBLING OPTIONS FOR ALL PURPOSES



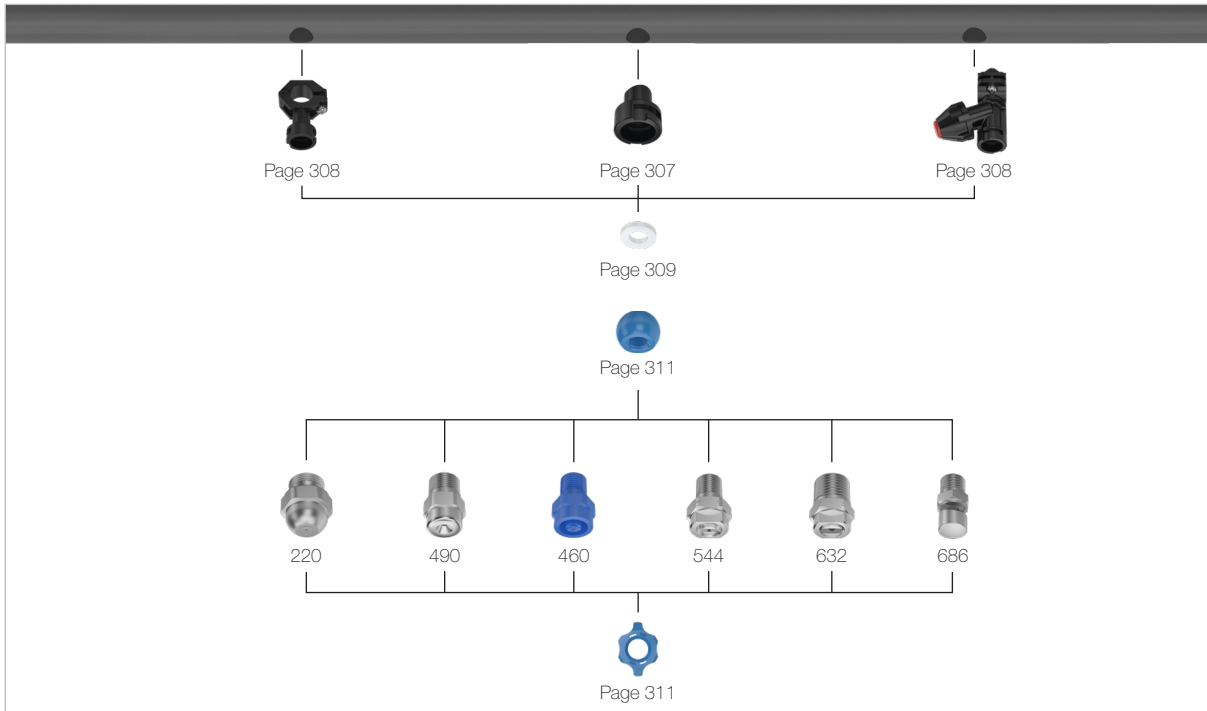
## Assembly accessories for nozzle tips or nozzles with female thread



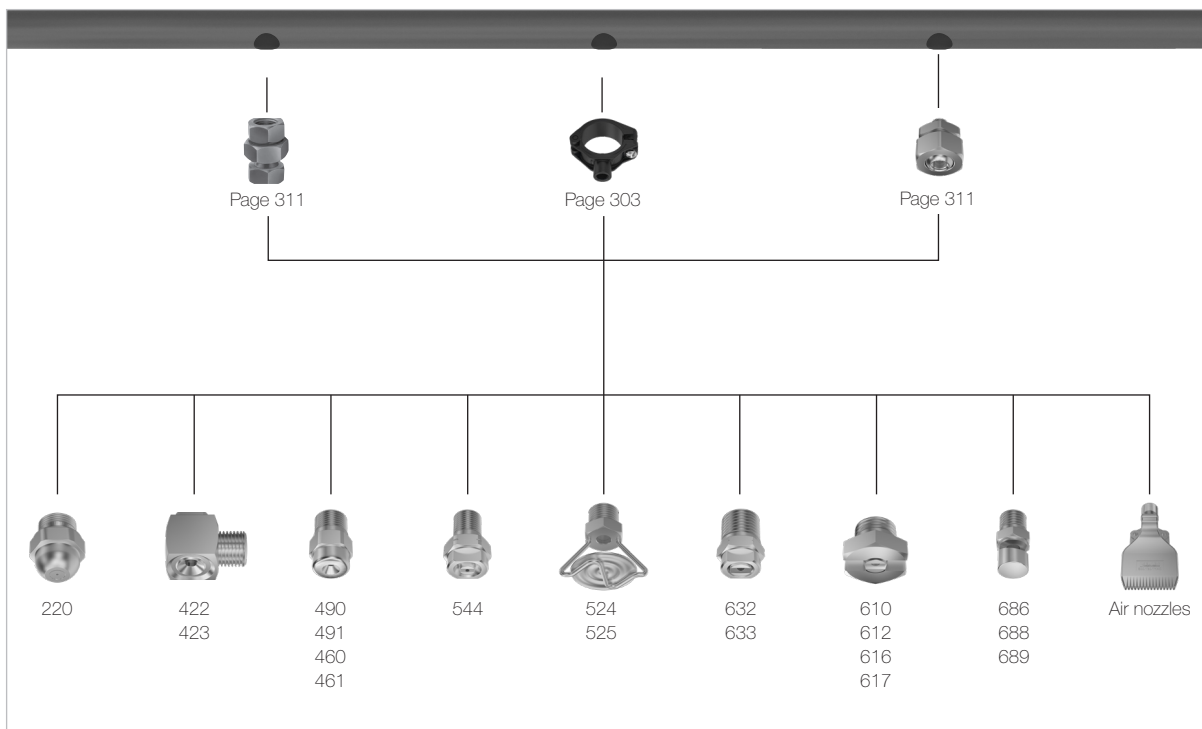
## Bayonet quick-release system for nozzle tips or nozzles with bayonet connection



## Bayonet quick-release system with ball joint for nozzles with male BSPP thread

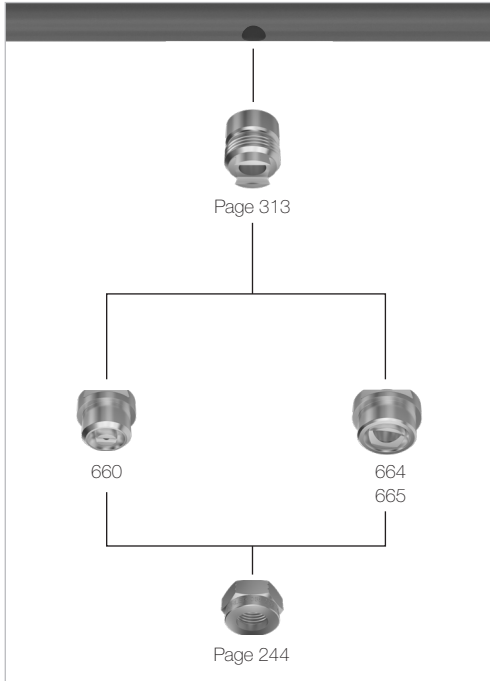


## Assembly accessories for nozzles with male thread

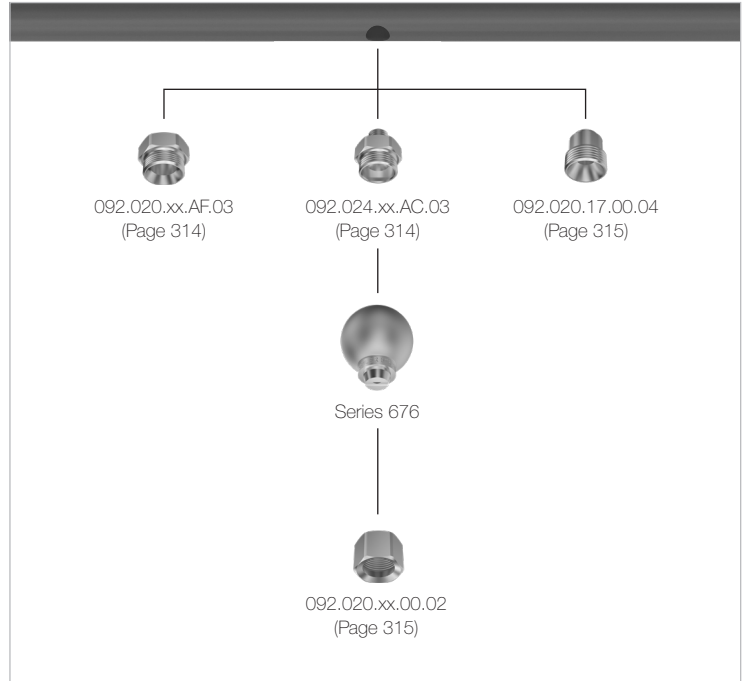




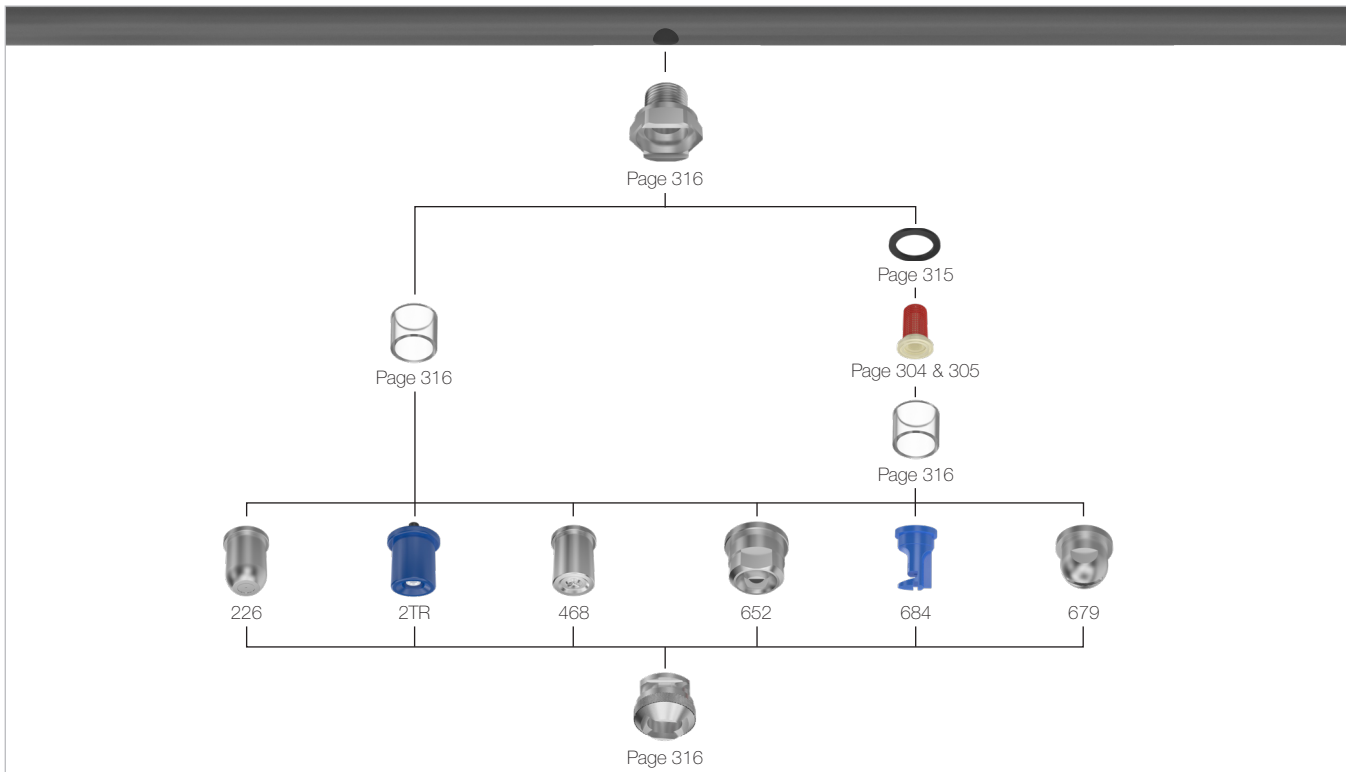
### Assembly accessories for nozzles with dovetail version

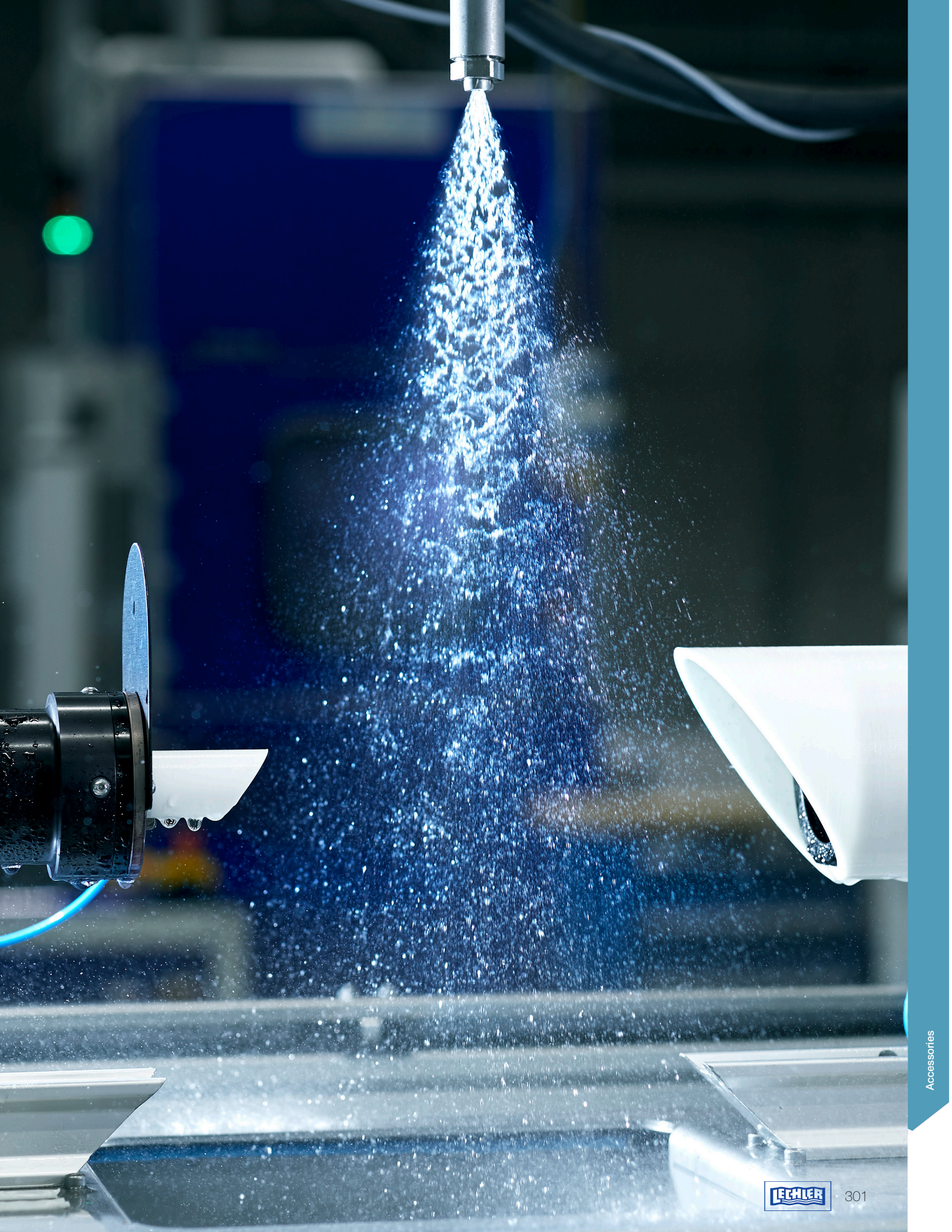


### Assembly accessories for nozzles with integrated ball joint



### TWISTLOC quick-release system for nozzles without thread

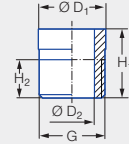




# Assembly accessories for nozzle tips or nozzles with BSPP female thread

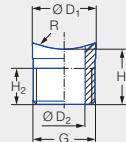


## Welded nipple



Series	Ordering number				G Male BSPP	Dimensions [in]				Weight [lb] (Brass)	
	Type	Mat. no.				H <sub>1</sub>	H <sub>2</sub>	Ø D <sub>1</sub>	Ø D <sub>2</sub>		
		02	17	30							53
226/216/2TR/302/308/350/468/652/684/548/679	065.210	●	●	●	●	3/8	.59	.39	.68	.45	.04
306/307/502/503/656/657	065.610	●	●		●	3/4	1.06	.55	1.10	.71	.13

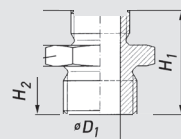
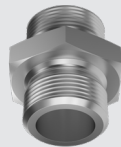
## Welded nipple with radius



Series	Ordering number		G Male BSPP	Dimensions [in]				Weight [lb]
	Type	Mat. no.		H <sub>1</sub>	H <sub>2</sub>	Ø D <sub>1</sub>	Ø D <sub>2</sub>	
		17						
226/216/2TR/302/308/350/468/652/684/548/679	065.217.17.yy <sup>1</sup>	●	3/8	.59	.39	.68	.45	.04
306/307/502/503/656/657	065.612.17.yy <sup>1</sup>	●	3/4	.91	.55	1.10	.71	.13

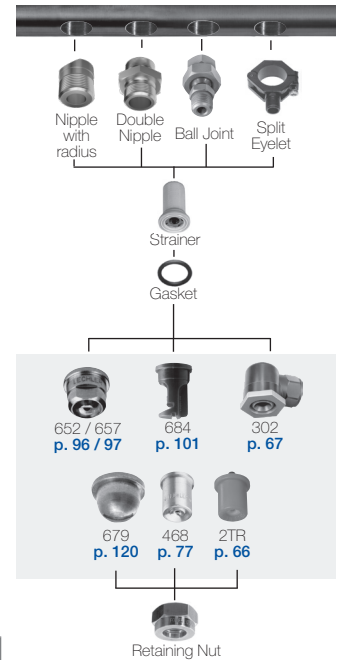
<sup>1</sup> Replace "yy" with the desired radius R (R = 10/13/16/20/25 or 31 mm)

## Double nipple



Series	Ordering number			Inlet Male NPT	Outlet Male BSPP	Dimensions [in]				Weight [lb] (Brass)
	Type	Mat. no.				H <sub>1</sub>	H <sub>2</sub>	Ø D <sub>1</sub>	Hex (mm)	
		17	30							
226/216/2TR/302/308/350/468/652/684/548/679	065.215.xx.11	●	●	1/4	3/8	1.44	.56	-	22	.06
	065.215.xx.12	●	●	3/8	3/8	1.38	.50	-	22	.06
	065.215.xx.10	●	●	1/4	UNF 11/16	1.44	.56	-	22	.06
	065.211.xx.10	●	●	3/8	UNF 11/16	1.25	.50	-	22	.06
306/307/502/503/656/657	065.611.xx.BK	●	●	3/4	3/4	1.65	.55	.71	32	.20

Ordering Type + Material no. = Ordering no.  
example: 065.215.xx.11 + 17 = 065.215.17.11

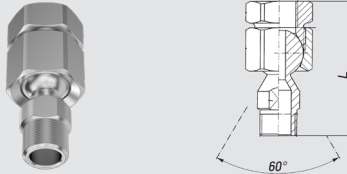


Assembly accessories for nozzle tips or nozzles with female threads.

# Assembly accessories for nozzle tips or nozzles with female thread

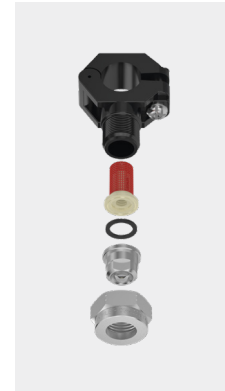
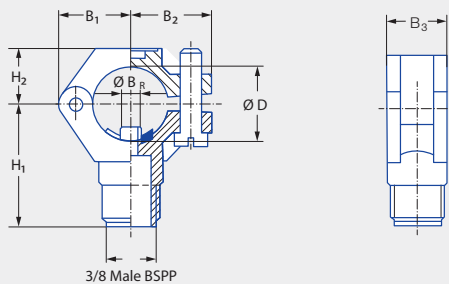


## Ball joints with male thread



Series	Ordering number			Inlet Female NPT	Outlet Male NPT	Dimensions [in]		Weight [lb] (Brass)
	Type	Mat. no.				Largest Hex (mm)	L	
		16	30					
226/216/2TR/ 302/308/350/ 468/652/684/ 548/679	092.022.xx.BE. BD	●		1/4	3/8	27	2.51	.18
	091.124.xx.BE. BF	●	●	3/8	3/8	27	2.10	.19

## Eyelet clamps with male thread



Series	Ordering number			Screw (material)	Pipe Ø	Drill hole diameter	Dimensions [in]							Weight [lb] (polyamide)		
	Type	Mat. no.					Ø B <sub>R</sub> <sup>1</sup>	Ø B <sub>R</sub> <sup>2</sup>	Ø D	B <sub>1</sub>	B <sub>2</sub>	B <sub>3</sub>	H <sub>1</sub>		H <sub>2</sub>	
		51 Black	53 White													5E Blue
226/2TR/ 216/302/ 308/350/468/ 652/679/684	090.053	●	●	●	Stainless steel 304	3/8"	1/4"	.24	.24-.25	.64-.71	.75	.87	0.73	1.36	0.57	.05
	090.003	●	●	●		1/2"	1/4"	.24	.24-.25	.78-.86	0.83	.94	0.73	1.44	0.65	.05
	090.013	●	●	●		3/4"	5/16"	.30	.30-.31	.98-1.08	0.96	1.05	0.87	1.56	0.69	.06
	090.023	●	●	●		1"	7/16"	.42	.42-.43	1.2-1.4	1.18	1.22	0.87	1.73	0.83	.07
	090.033	●	●	●		1 1/4"	1/2"	.50	.50-.51	1.6-1.7	1.34	1.34	0.98	1.89	0.98	.09

<sup>1</sup> Ø B<sub>R</sub> = spigot diameter.

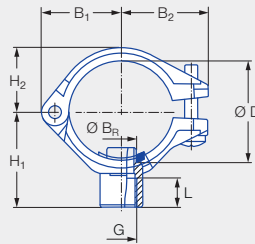
<sup>2</sup> Ø B = recommended bore diameter.

Ordering Type + Material no. = Ordering no.  
example: 090.053 + 51 = 090.053.51

# Assembly accessories for nozzle tips or nozzles with male BSPP thread



Eyelet clamps with female thread



For all nozzles with	Ordering number						Screw (material)	Pipe Ø	Dimensions [in]									Weight [lb] (polyamide)
	Type	Mat. no.			Conn.				B <sub>1</sub>	B <sub>2</sub>	B <sub>3</sub>	H <sub>1</sub>	H <sub>2</sub>	L	Ø B <sub>R</sub> <sup>1</sup>	Ø B <sup>2</sup>	Ø D	
		51 Black	53 White	5E Blue	1/8 BSPP	1/4 BSPP												
Male thread	090.100	●	●	●	AB	AD	Stainless steel 316	3/8"	0.79	0.91	0.73	1.10	0.55	0.47	0.24	.24-.25	.64-.71	.04
1/8 BSPP	090.110	●	●	●	AB	AD		1/2"	0.87	0.98	0.73	1.22	0.63	0.47	0.24	.24-.25	.78-.86	.04
1/4 BSPP	090.120	●	●	●	AB	AD		3/4"	0.98	1.10	0.87	1.30	0.75	0.47	0.30	.30-.31	.98-1.08	.05
	090.130	●	●	●	AB	AD		1"	1.18	1.30	0.87	1.42	0.91	0.47	0.42	.42-.43	1.2-1.4	.07
	090.140	●	●	●	AB	AD		1 1/4"	1.34	1.46	0.98	1.57	1.10	0.47	0.50	.50-.51	1.6-1.7	.08

<sup>1</sup> Ø B<sub>R</sub> = spigot diameter.

<sup>2</sup> Ø B = recommended bore diameter.

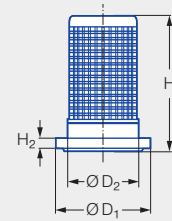
Ordering Type + Material no. + Code = Ordering no.  
 example: 090.100 + 51 + AB = 090.100.51.AB



# Assembly accessories for nozzle tips, bayonet and female thread

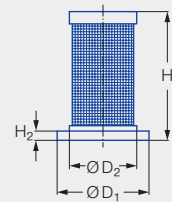


## Filter



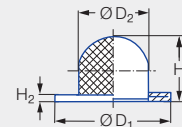
Series	Nozzle size	Ordering number		Color	Dimensions [in]					Weight [lb]
		Type	Mat. no.		Mesh size (mm)	H <sub>1</sub>	H <sub>2</sub>	Ø D <sub>1</sub>	Ø D <sub>2</sub>	
			56							
		POM								
216/2TR/ 302/468/ 422 bayonet/ 652/646/684	xxx.32x-xxx.44x	065.257	●	Blue	60	.84	.08	.58	.43	.04
	xxx.48x-xxx.56x	065.256	●	Red	25	.84	.08	.58	.43	.04

## Filter



Series	Nozzle size	Ordering number		Color	Dimensions [in]					Weight [lb]
		Type	Mat. no.		Mesh size (mm)	H <sub>1</sub>	H <sub>2</sub>	Ø D <sub>1</sub>	Ø D <sub>2</sub>	
			53							
		Polypropylene								
216/2TR/ 302/468/ 422 bayonet/ 652/646/684	xxx.32x-xxx.44x	095.016.53.15.62	●	Light pink	170	.83	.06	.59	.43	.002
		Strainer insert 304 SS								

## Cup strainer



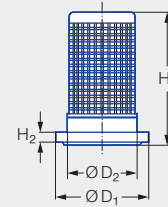
Series	Nozzle size	Ordering number		Mesh size (mm)	Dimensions [in]					Weight [lb]
		Type	Mat. no.		H <sub>1</sub>	H <sub>2</sub>	Ø D <sub>1</sub>	Ø D <sub>2</sub>		
			26							
		Monel/Copper								
216/2TR/ 302/468/ 422 bayonet/ 652/646/684	xxx.32x-xxx.44x	065.252	●	35	.33	.06	.58	.35	.002	

Ordering Type + Material no. = Ordering no.  
example: 065.257 + 56 = 065.257.56

# Assembly accessories for nozzle tips, bayonet and female thread

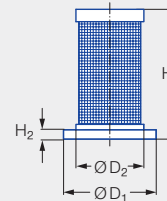


Ball-type non-return valve with integrated filter  
 $p_{max} = 20 \text{ bar}$



Series	Nozzle size	Ordering number		Color	Pressure [psi]		Dimensions [in]				Weight [lb]	
		Type	Mat. no.		Opening pressure	Closing pressure	Mesh size (mm)	H <sub>1</sub>	H <sub>2</sub>	Ø D <sub>1</sub>		Ø D <sub>2</sub>
			56									
216/2TR/ 302/468/ 422 bayonet/ 652/646/684	xxx.32x-xxx.44x	<b>065.265</b> Ball 420 SS Spring 302 SS	●	Blue	6-7	5-7	50	.84	.08	.60	.43	.004
	xxx.48x-xxx.56x	<b>065.266</b> Ball 420 SS Spring 302 SS	●	Red	6-7	5-7	25	.84	.08	.60	.43	.004

Ball-type non-return valve with integrated filter



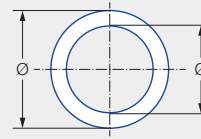
Series	Nozzle size	Ordering number		Color	Pressure [psi]		Dimensions [in]				Weight [lb]	
		Type	Mat. no.		Opening pressure	Closing pressure	Mesh size (mm)	H <sub>1</sub>	H <sub>2</sub>	Ø D <sub>1</sub>		Ø D <sub>2</sub>
			53									
216/2TR/ 302/468/ 422 bayonet/ 652/646/684	xxx.14x-xxx.36x	<b>095.016.53.11.00</b> Strainer insert/ Ball 304 SS Spring 302 SS	●	Blue	approx. 7	approx. 3	170	.83	.06	.60	.43	.004
	xxx.14x-xxx.36x	<b>095.016.53.14.63</b> Strainer insert/ Ball 304 SS Spring 302 SS	●	Green	approx. 41	approx. 23	170	.83	.06	.60	.43	.004

Ordering Type + Material no. = Ordering no.  
 example: 065.265 + 56 = 065.265.56

# Assembly accessories for nozzle tips and female thread



## Gaskets

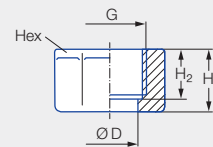
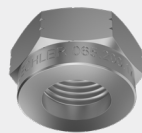


Series	Nozzle Code	Ordering number	Mat. no.				Dimensions [in]	Weight [lb]	
			Type	55	71	72			73
				PTFE	Cu. ISO PL. 7504	EWP 210 (asbestos-free)			Soft rubber
610	1/8 BSPP	061.040			●		Ø .39 x Ø .55 x .04	.0002	
220/612	1/4 BSPP	061.240	●	● <sup>1</sup>	●		Ø .52 x Ø .67 x .04	.0004	
490/491/ 460/461/ 616/617/689	3/4 BSPP	061.640		● <sup>2</sup>	●		Ø 1.04 x Ø 1.26 x .04	.001	
405	1 1/4 BSPP	062.140			●		Ø 1.65 x Ø 1.97 x .04	.002	
405	2 BSPP	062.540			●		Ø 2.36 x Ø 2.76 x .08	.008	
226/468/652/ 684/679	Retaining nut 3/8	065.240	●		●	●	Ø .43 x Ø .59 x .04	.0003	
656/657	Retaining nut 3/4	065.640			●		Ø .71 x Ø .94 x .04	.001	

<sup>1</sup> Dimensions [in] for mat. no. 71: .52 x .67 x .08.

<sup>2</sup> Dimensions [in] for mat. no. 71: 1.04 x 1.26 x .10.

## Retaining nuts



Series	Ordering number	Mat. no.						G BSPP	Dimensions [in]				Weight [lb] (Brass)
		16	17 <sup>1</sup>	1Y	30	56 Black	5E Blue		H <sub>1</sub>	H <sub>2</sub>	Ø D	Hex (mm)	
		Stainless steel 303	Stainless steel 316Ti	Stainless steel 316L	Brass	POM	PVDF						
226/2TR/ 468/652/660/ 684/548/679	065.200	●	●		●			3/8	0.51	0.39	0.50	22	.05
	065.200					●	●	3/8	0.57	0.45	0.51	22	.05
	069.000	●		●	●			UNF 11/16	0.56	0.38	0.52	22	.05
656/657/ 664/665	065.600	●	●		●		●	3/4	0.63	0.51	0.79	32	.13

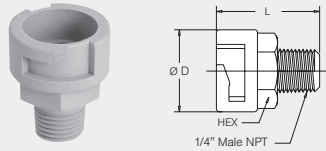
<sup>1</sup> We reserve the right to supply material 316Ti or 316L under material no. 17.

Ordering Type + Material no. = Ordering no.  
example: 065.200 + 16 = 065.200.16

# Assembly accessories for nozzle tips or nozzles with female thread Bayonet quick release system

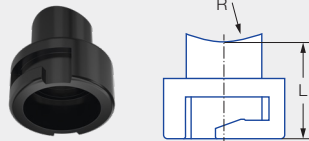


## Bayonet threaded nipple



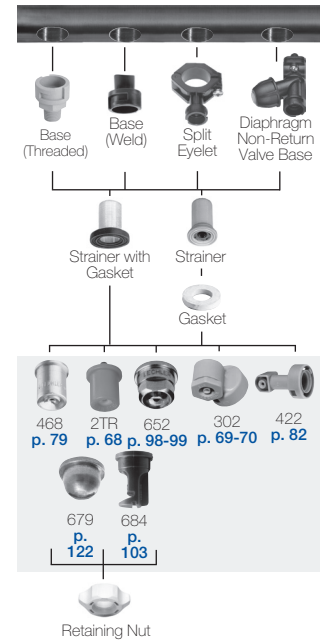
Series	Ordering number			Dimensions [in]			Weight [lb]
	Type	Mat. no.	Connection	L	R	Hex (mm)	
		PP					
302 bay, 422 bay, 2TR, 468, 652, 679, 684	<b>090.075.53.00</b>	●	1/4" Male NPT	1.29	1.02	20	.01

## Bayonet welded nipple



Series	Ordering number			Dimensions [in]		Weight [lb]
	Type	Mat. no.		L	R	
		50	53			
226/2TR/302 bayonet/ 422 bayonet/468/ 652/646/684/679	<b>095.016.xx.08.05<sup>1</sup></b>	●	●	.98	.63	.01

<sup>1</sup> Replace "xx" with the desired material no.



**Assembly accessories for nozzle tips or nozzles with female threads. Bayonet quick release system.**

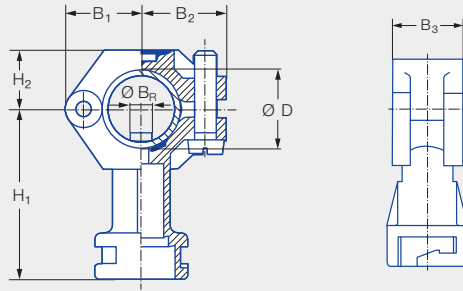
Twist angle to the right in relation to the pipe axis. Twist angle 10°. Other twist angles available on request.

# Assembly accessories for nozzle tips or nozzles with female thread

## Bayonet quick release system



Eyelet clamps with bayonet quick-release system

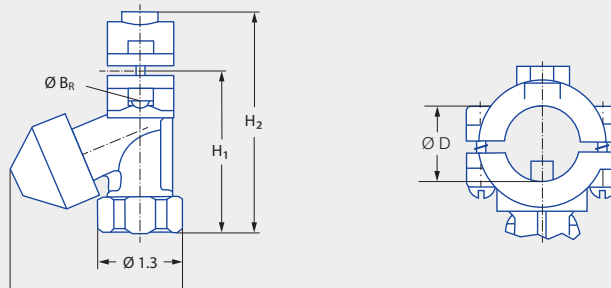


Series	Ordering number				Screw (material)	Pipe Ø	Dimensions [in]							Weight [lb] (Polyamide)		
	Type	Mat. no.					Bayonet	B <sub>1</sub>	B <sub>2</sub>	B <sub>3</sub>	H <sub>1</sub>	H <sub>2</sub>	Ø B <sub>R</sub> <sup>1</sup>		Ø B <sup>2</sup>	Ø D
		51 Black Polyamide	53 White Polypropylene	5E Blue PVDF												
226/2TR/ 302 bayonet/ 422 bayonet/ 468/652/646/ 684/679	090.003	●	●	●	KA	Stainless steel 304	1/2"	0.83	0.94	0.73	1.95	0.65	0.24	.24-.25	.79-.87	.05
	090.013	●	●	●	KA		3/4"	0.96	1.04	0.87	2.07	0.69	0.30	.30-.31	.98-1.08	.06
	090.023	●	●	●	KA		1"	1.18	1.22	0.87	2.24	0.83	0.42	.42-.43	1.26-1.36	.07

<sup>1</sup> Ø B<sub>R</sub> = spigot diameter.

<sup>2</sup> Ø B = recommended bore diameter.

Diaphragm non-return valve with bayonet quick-release system



Series	Ordering number			Screw (material)	Pipe Ø	Ø D [in]	Pressure [psi]		Dimensions [in]				Weight [lb]
	Type	Mat. no.	Connection				Opening pressure	Closing pressure	H <sub>1</sub>	H <sub>2</sub>	Ø B <sub>R</sub> <sup>1</sup>	Ø B <sup>2</sup>	
		56 Black POM											
226/2TR/ 302 bayonet/ 422 bayonet/ 468/652/646/ 684/679	065.272	●	KH	Stainless steel 303	1/2"	.78-.86	12	9	2.32	3.31	0.24	.24-.25	.11
	065.272	●	KL		3/4"	.98-1.08	12	9	2.60	3.54	0.38	.38-.39	.12

<sup>1</sup> Ø B<sub>R</sub> = spigot diameter.

<sup>2</sup> Ø B = recommended bore diameter.

Material	Max. temperature [°F]	Max. pressure [psi]
PA, PP, PVDF, POM	149	145
PA, PP, PVDF, POM	176	116
PVDF	212	58

**Notice:** Please consider the material combination when using bayonet eyelet clamps with bayonet quick-release system nuts. The nuts may be difficult to turn when using different materials.

# Assembly accessories for bayonet quick release system



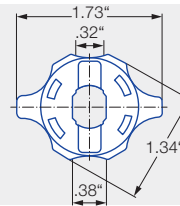
## Gaskets



Ordering number	Description		Weight [lb]
Type			
<b>095.015.7J.01.65</b>	Santoprene	Replacement gasket for use with strainer	.016
<b>065.242.73.00.00</b>	Rubber	Replacement gasket	.016

## Bayonet quick-release system nuts

Incl. gasket 065.242.73 (material: Rubber)

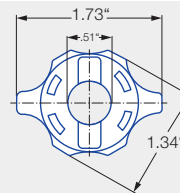


Series	Type	Ordering number			Color	Weight [lb]
		Mat. no.				
		POM	Polypropylene	PVDF		
652/679	<b>065.202.56.00</b>	●			Red	.022
	<b>065.202.53.00</b>		●		Grey	.022
	<b>065.202.5E.00*</b>			●	Blue	.022

\*Does not work with 095.075.53.00.0 base includes gasket 065.242.7A (Viton)

## Bayonet quick-release system nuts

Incl. gasket 065.242.73 (material: Rubber)



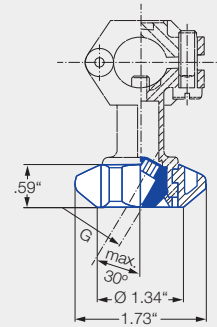
Series	Type	Ordering number		Color	Weight [lb]
		Mat. no.			
		POM	Polypropylene		
226/2TR/ 468/684	<b>065.202.56.11</b>	●		Black	.022
	<b>065.202.53.11</b>		●	Grey	.022

**Notice:** Please consider the material combination when using bayonet eyelet clamps with bayonet quick-release system nuts. The nuts may be difficult to turn when using different materials.

# Assembly accessories for bayonet quick release system



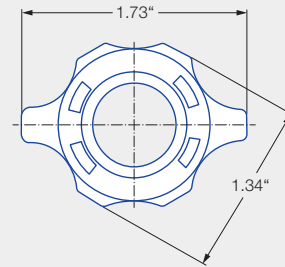
Ball joint for eyelet clamps with bayonet quick-release system



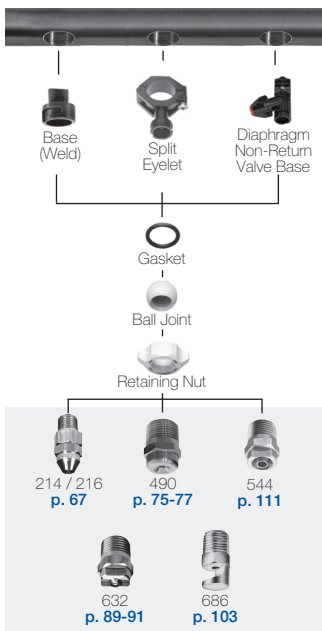
For all nozzles with 1/8" or 1/4" male thread	Ordering number				Color	Weight [oz]
	Type	Mat. no.	Connection			
		PVDF	1/8 BSPP	1/4 BSPP		
Ball joint	092.150	5E	AB	AD	Blue	.064

Bayonet quick-release system nut for ball joint

Incl. O-ring  
Ordering no. 095.015.7C.04.16.0  
(material: 72 NBR 872)



For all nozzles with 1/8" or 1/4" male thread	Ordering number		Color	Weight [oz]
	Type	Mat. no.		
		PVDF		
Quick-release system nut	092.150.5E.00	●	Blue	.16



Assembly accessories for bayonet quick release system — male threaded nozzles.

Max. temperature [°F]	Max. pressure [psi]
149	145
176	116
212	58

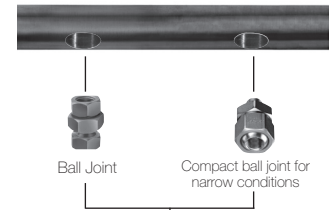
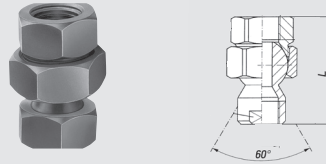
Ordering Type + Material no. + Code = Ordering no.  
example: 092.150 + 5E + AB = 092.150.5E.AB

# Assembly accessories for nozzles with male thread



## Ball joints

Ball joint with thread connection, female-female

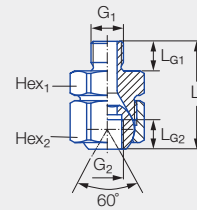


For all series	Ordering number		Inlet NPT Female	Outlet NPT Female	Dimensions [in]		Weight [lb] (Brass)	
	Type	Mat. no.			Largest Hex (mm)	L		
		16						30
422, 490, 544, 632, 686, 696	092.010.xx.BB.BB	●	●	1/8	1/8	22	1.70	.09
	092.020.xx.BD.BD	●	●	1/4	1/4	27	2.37	.13
	092.030.xx.BF.BF	●	●	3/8	3/8	27	2.23	.18



Assembly accessories for nozzles with male threads.

## Compact ball joints



For all nozzles with	Type	Ordering number		Connection	G <sub>1</sub> Inlet NPT Male	G <sub>2</sub> Outlet BSPP Female	Dimensions [in]					Weight [lb] (Brass)
		Mat. no.					L	L <sub>G1</sub>	L <sub>G2</sub>	Hex <sub>1</sub> (mm)	Hex <sub>2</sub> (mm)	
		16	30									
1/8" male thread	092.010	●	●	BA	1/8	1/8	1.15	.31	.31	22	24	2.5
1/4" male thread	092.024	●	●	BC	1/4	1/4	1.73	.47	.47	27	27	4.9
3/8" male thread	092.030	●	●	BE	3/8	3/8	1.73	.47	.47	27	30	5.6

Also available in BSPT inlet CA/CC/CE

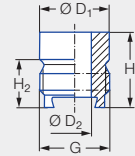
Ordering    Type    +    Material no.    +    Code    =    Ordering no.  
 example: 092.010    +    16                    +    BA                =    092.010.16.BA



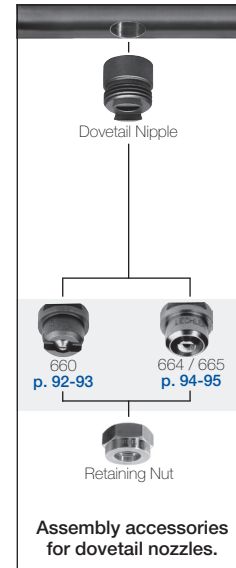
# Assembly accessories for dovetail nozzles



## Welded nipple with dovetail guide

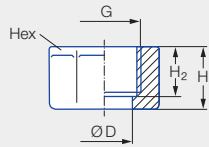
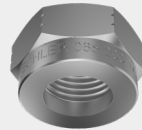


Series	Ordering number		G BSPP	Dimensions [in]				Weight [lb]
	Type	Mat. no.		H <sub>1</sub>	H <sub>2</sub>	Ø D <sub>1</sub>	Ø D <sub>2</sub>	
		17 Stainless steel 316Ti						
660	066.011	●	3/8	0.71	0.45	0.65	0.31	.04
664/665	066.410	●	3/4	1.06	0.61	1.10	0.55	.14



Assembly accessories for dovetail nozzles.

## Retaining nuts



Series	Ordering number			G BSPP	Dimensions [in]				Weight [lb] (Brass)	
	Type	Mat. no.			H <sub>1</sub>	H <sub>2</sub>	Ø D	Hex (mm)		
		16 Stainless steel 303	17 <sup>1</sup> Stainless steel 316Ti							30 Brass
226/2TR/ 468/652/660/ 684/548/679	065.200	●	●	●	3/8	0.51	0.39	0.50	22	.05
656/657/ 664/665	065.600	●	●	●	3/4	0.63	0.51	0.79	32	.13

<sup>1</sup> We reserve the right to supply material 316Ti or 316L under material no. 17.

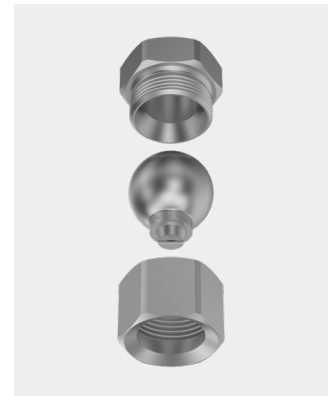
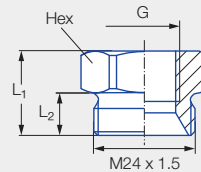
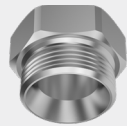
Dovetail nozzles have an automatic alignment guide which requires a matching dovetail base. Once the base is set, the nozzle can be removed and replaced without need to readjust the alignment. Nozzle is secured to the base with a retaining nut.

Ordering Type + Material no. = Ordering no.  
example: 066.011 + 17 = 066.011.17

# Accessories for nozzle series 676 with integrated ball joint



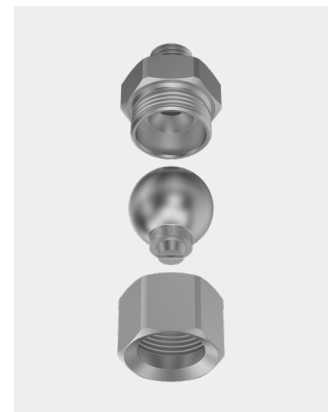
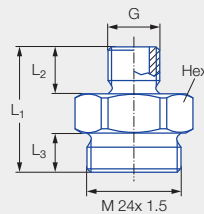
## Threaded sockets



Series	Ordering number		G BSPP	Dimensions [in]			Weight [lb] (Brass)	
	Type	Mat. no.		L <sub>1</sub>	L <sub>2</sub>	Hex (mm)		
		16						30
		Stainless steel 303	Brass					
676	092.020.xx.AF.03 <sup>1</sup>	●	●	3/8	.79	.39	27	.11

<sup>1</sup> Replace "xx" by material no.

## Threaded nipple



Series	Ordering number		G BSPP	Dimensions [in]				Weight [lb] (Brass)	
	Type	Mat. no.		L <sub>1</sub>	L <sub>2</sub>	L <sub>3</sub>	Hex (mm)		
		16							30
		Stainless steel 303	Brass						
676	092.024.xx.AC.03 <sup>1</sup>	●	●	1/4	1.26	.47	.39	27	.15

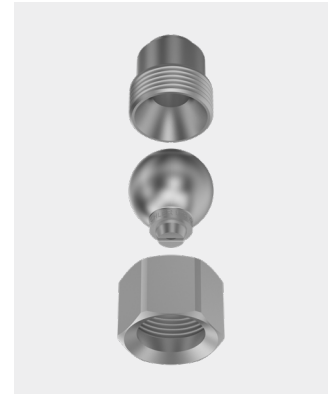
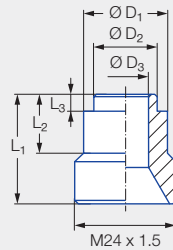
<sup>1</sup> Replace "xx" by material no.

Order    Type    +    Material no.    =    Ordering no.  
example: 092.020.xx.AF.03    +    16    =    092.020.16.AF.03

# Accessories for nozzle series 676 with integrated ball joint

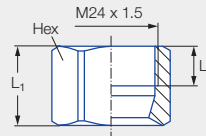
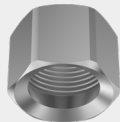


## Welded nipple



Series	Ordering number		Dimensions [in]						Weight [lb]
	Type	Mat. no.	L <sub>1</sub>	L <sub>2</sub>	L <sub>3</sub>	Ø D <sub>1</sub>	Ø D <sub>2</sub>	Ø D <sub>3</sub>	
		17							
		Stainless steel 316Ti							
676	092.020.17.00.04	●	1.02	.55	.16	.79	.59	.43	.10

## Retaining nuts



Series	Ordering number		Dimensions [in]				Weight [lb] (Brass)
	Type	Mat. no.		L <sub>1</sub>	L <sub>2</sub>	Hex (mm)	
		16	30				
		Stainless steel 303	Brass				
676	092.020.xx.00.02 <sup>1</sup>	●	●	.79	.39	27	.08

<sup>1</sup> Replace "xx" by material no.

**Notice:** The assembly accessories shown can be used with the low pressure flat fan nozzle with ball joint (series 676) (see Page 248/305).

Order    Type    +    Material no.    =    Ordering no.  
example: 092.020.xx.00.02    +    16    =    092.020.16.00.02

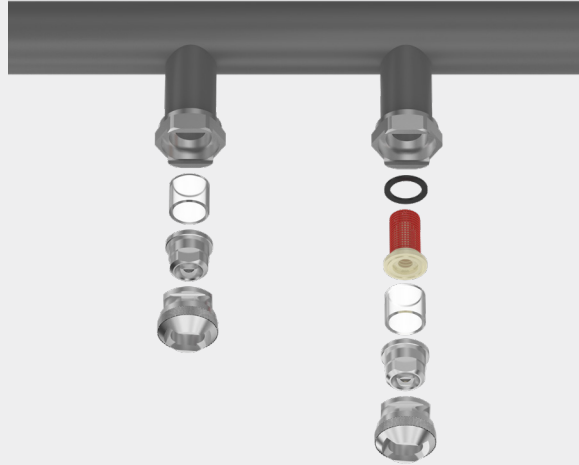
# » TWISTLOC

## Quick-change nozzle system

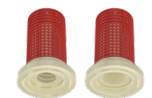


**Lechler TWISTLOC, nozzle changing in less than no time.**  
Save time and money with the quick-change nozzle system.

- **Quick:**  
It takes just one twist to install or remove the nozzle.
- **Easy:**  
Can be installed without tools – even in difficult-to-access locations and in bad lighting conditions.
- **Safe:**  
Installation errors are avoided, as the nozzles are always set to the correct direction.
- **Max. pressure:**  
15 bar.



System components		Ordering number							Inner Ø D [in]	Weight [lb]	
		Type	Mat. no.				Connection				
			1C	16	5E	7A	1/4 NPT	3/8 NPT			Welded connection
Threaded nipple		092.102	●				BC		.31	.06	
		092.102	●					BE	.46	.06	
		092.102			●			BE	.31	.02	
Welded nipple		092.104	●					00	.46	.10	
Gasket for material 304 SS and 303 SS		092.113			●				–	.002	
Gasket for material PVDF		092.115			●				–	.002	
Gasket, incl. rubber gasket ring for use with non-return valves or strainers		092.116			●				–	.004	
Gasket, incl. rubber gasket ring for use with non-return valves or strainers, for PVDF material		092.114			●				–	.004	
Quick-release system For nozzle series 652/679		092.106	●	●					–	.04 (stainless steel)	
Quick-release system For nozzle series 226/468/684		092.108	●	●					–	.04 (stainless steel)	



**Non-return valves, strainers**  
For installation in nipples with inner Ø 11.6 mm (see Page 305/306).

Ordering Type + Material no. + Code = Ordering no.  
example: 092.102 + 16 + BC = 092.102.16.BC

