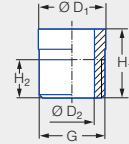


Assembly accessories for nozzle tips or nozzles with BSPP female thread

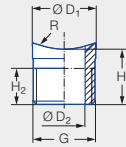


Welded nipple



Series	Ordering number				G Male BSPP	Dimensions [in]				Weight [lb] (Brass)	
	Type	Mat. no.				H ₁	H ₂	Ø D ₁	Ø D ₂		
		02	17	30							53
226/216/2TR/302/308/350/468/652/684/548/679	065.210	●	●	●	●	3/8	.59	.39	.68	.45	.04
306/307/502/503/656/657	065.610	●	●		●	3/4	1.06	.55	1.10	.71	.13

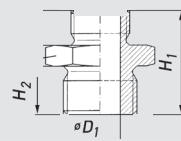
Welded nipple with radius



Series	Ordering number		G Male BSPP	Dimensions [in]				Weight [lb]
	Type	Mat. no.		H ₁	H ₂	Ø D ₁	Ø D ₂	
		17						
226/216/2TR/302/308/350/468/652/684/548/679	065.217.17.yy ¹	●	3/8	.59	.39	.68	.45	.04
306/307/502/503/656/657	065.612.17.yy ¹	●	3/4	.91	.55	1.10	.71	.13

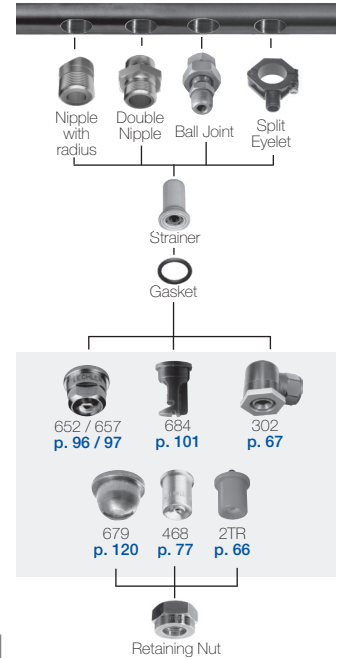
¹ Replace "yy" with the desired radius R (R = 10/13/16/20/25 or 31 mm)

Double nipple



Series	Ordering number			Inlet Male NPT	Outlet Male BSPP	Dimensions [in]				Weight [lb] (Brass)
	Type	Mat. no.				H ₁	H ₂	Ø D ₁	Hex (mm)	
		17	30							
226/216/2TR/302/308/350/468/652/684/548/679	065.215.xx.11	●	●	1/4	3/8	1.44	.56	-	22	.06
	065.215.xx.12	●	●	3/8	3/8	1.38	.50	-	22	.06
	065.215.xx.10	●	●	1/4	UNF 11/16	1.44	.56	-	22	.06
	065.211.xx.10	●	●	3/8	UNF 11/16	1.25	.50	-	22	.06
306/307/502/503/656/657	065.611.xx.BK	●	●	3/4	3/4	1.65	.55	.71	32	.20

Ordering Type + Material no. = Ordering no.
example: 065.215.xx.11 + 17 = 065.215.17.11

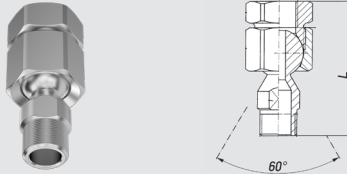


Assembly accessories for nozzle tips or nozzles with female threads.

Assembly accessories for nozzle tips or nozzles with female thread

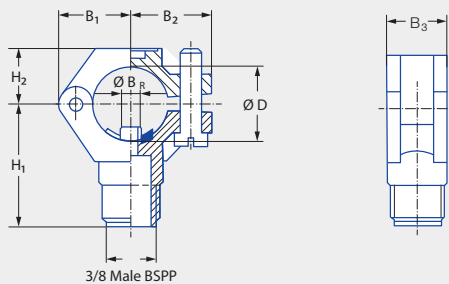


Ball joints with male thread



Series	Ordering number			Inlet Female NPT	Outlet Male NPT	Dimensions [in]		Weight [lb] (Brass)
	Type	Mat. no.				Largest Hex (mm)	L	
		16	30					
226/216/2TR/ 302/308/350/ 468/652/684/ 548/679	092.022.xx.BE. BD	●		1/4	3/8	27	2.51	.18
	091.124.xx.BE. BF	●	●	3/8	3/8	27	2.10	.19

Eyelet clamps with male thread



Series	Ordering number			Screw (material)	Pipe Ø	Drill hole diameter	Dimensions [in]							Weight [lb] (polyamide)		
	Type	Mat. no.					Ø B _R ¹	Ø B _R ²	Ø D	B ₁	B ₂	B ₃	H ₁		H ₂	
		51 Black	53 White													5E Blue
226/2TR/ 216/302/ 308/350/468/ 652/679/684	090.053	●	●	●	Stainless steel 304	3/8"	1/4"	.24	.24-.25	.64-.71	.75	.87	0.73	1.36	0.57	.05
	090.003	●	●	●		1/2"	1/4"	.24	.24-.25	.78-.86	0.83	.94	0.73	1.44	0.65	.05
	090.013	●	●	●		3/4"	5/16"	.30	.30-.31	.98-1.08	0.96	1.05	0.87	1.56	0.69	.06
	090.023	●	●	●		1"	7/16"	.42	.42-.43	1.2-1.4	1.18	1.22	0.87	1.73	0.83	.07
	090.033	●	●	●		1 1/4"	1/2"	.50	.50-.51	1.6-1.7	1.34	1.34	0.98	1.89	0.98	.09

¹ Ø B_R = spigot diameter.

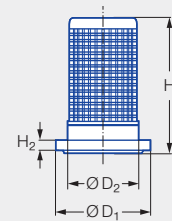
² Ø B = recommended bore diameter.

Ordering Type + Material no. = Ordering no.
example: 090.053 + 51 = 090.053.51

Assembly accessories for nozzle tips, bayonet and female thread

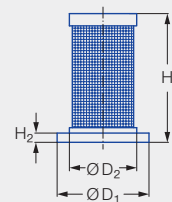


Filter



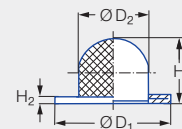
Series	Nozzle size	Ordering number		Color	Dimensions [in]					Weight [lb]
		Type	Mat. no.		Mesh size (mm)	H ₁	H ₂	Ø D ₁	Ø D ₂	
			56							
		POM								
216/2TR/ 302/468/ 422 bayonet/ 652/646/684	xxx.32x-xxx.44x	065.257	●	Blue	60	.84	.08	.58	.43	.04
	xxx.48x-xxx.56x	065.256	●	Red	25	.84	.08	.58	.43	.04

Filter



Series	Nozzle size	Ordering number		Color	Dimensions [in]					Weight [lb]
		Type	Mat. no.		Mesh size (mm)	H ₁	H ₂	Ø D ₁	Ø D ₂	
			53							
		Polypropylene								
216/2TR/ 302/468/ 422 bayonet/ 652/646/684	xxx.32x-xxx.44x	095.016.53.15.62	●	Light pink	170	.83	.06	.59	.43	.002
		Strainer insert 304 SS								

Cup strainer



Series	Nozzle size	Ordering number		Mesh size (mm)	Dimensions [in]				Weight [lb]
		Type	Mat. no.		H ₁	H ₂	Ø D ₁	Ø D ₂	
			26						
		Monel/Copper							
216/2TR/ 302/468/ 422 bayonet/ 652/646/684	xxx.32x-xxx.44x	065.252	●	35	.33	.06	.58	.35	.002

Ordering Type + Material no. = Ordering no.
example: 065.257 + 56 = 065.257.56