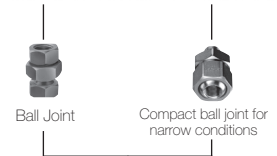
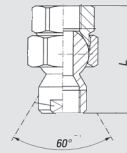
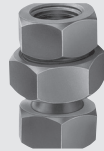


Assembly accessories for nozzles with male thread



Ball joints

Ball joint with thread connection, female-female

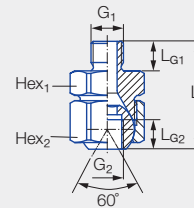


For all series	Ordering number	Mat. no.		Inlet NPT Female	Outlet NPT Female	Dimensions [in]		Weight [lb] (Brass)
		16	30			Largest Hex (mm)	L	
		Stainless steel 303	Brass					
422, 490, 544, 632, 686, 696	092.010.xx.BB.BB	●	●	1/8	1/8	22	1.70	.09
	092.020.xx.BD.BD	●	●	1/4	1/4	27	2.37	.13
	092.030.xx.BF.BF	●	●	3/8	3/8	27	2.23	.18



Assembly accessories for nozzles with male threads.

Compact ball joints



For all nozzles with	Ordering number	Mat. no.		Connection	G ₁ Inlet NPT Male	G ₂ Outlet BSPP Female	Dimensions [in]					Weight [lb] (Brass)
		16	30				L	L _{G1}	L _{G2}	Hex ₁ (mm)	Hex ₂ (mm)	
		Stainless steel 303	Brass									
1/8" male thread	092.010	●	●	BA	1/8	1/8	1.15	.31	.31	22	24	2.5
1/4" male thread	092.024	●	●	BC	1/4	1/4	1.73	.47	.47	27	27	4.9
3/8" male thread	092.030	●	●	BE	3/8	3/8	1.73	.47	.47	27	30	5.6

Also available in BSPT inlet CA/CC/CE

Ordering Type + Material no. + Code = Ordering no.
 example: 092.010 + 16 + BA = 092.010.16.BA