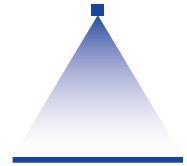


# Flat fan nozzles for air or saturated steam Series 679

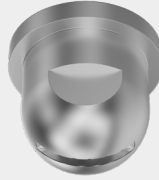


### Features:

- Wide, powerful air stream
- Assembly with retaining nut
- Easy nozzle changing
- Simple jet alignment

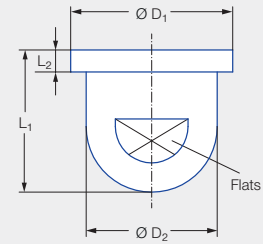
### Applications:

- Blowing off liquids
- Cooling
- Heating
- Drying



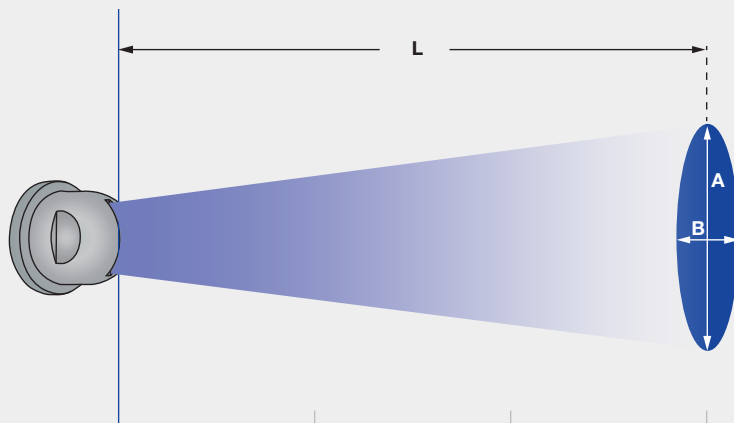
OSHA<sup>1</sup>

FDA<sup>2</sup>

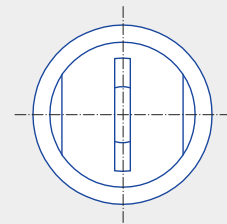


### Series 679

<sup>1</sup> Meets OSHA specifications in terms of noise level.  
<sup>2</sup> Only applies to the stainless variant.



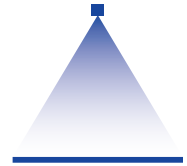
Jet pattern of series 679



Pressure		15 psi	45 psi	75 psi
679.037	Length L [in]	1.9	3.9	5.9
	A [in]	4.3	10.2	15
	B [in]	1	1.4	1.8
679.117	Length L [in]	1.9	4.9	5.9
	A [in]	3.9	9.8	12.2
	B [in]	1	1.2	1.4
679.255	Length L [in]	14.8	20	20
	A [in]	3.5	7.5	11
	B [in]	3.5	3.5	3.5

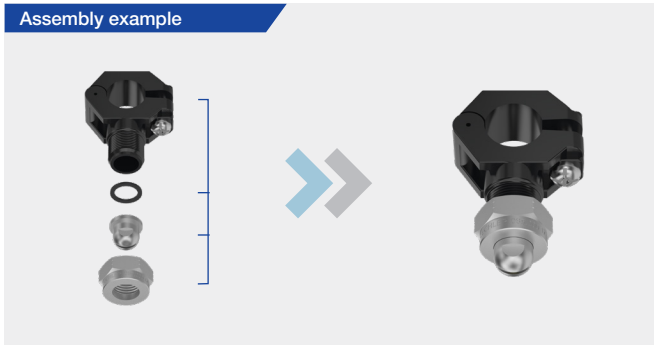
Pressure		15 psi	45 psi	75 psi
679.415	Length L [in]	27	35	35
	A [in]	6.3	11.8	18.1
	B [in]	8.5	8.5	8.5
679.495	Length L [in]	35	35	35
	A [in]	7.9	16.1	20.1
	B [in]	9.1	9.1	9.1

Connection	Dimensions [in]					Weight [lbs] (brass)
	L <sub>1</sub>	L <sub>2</sub>	∅ D <sub>1</sub>	∅ D <sub>2</sub>	Flats	
Assembly with retaining nut 3/8 BSPP	0.51	0.08	0.58	0.83	10	0.02



Spray angle	Ordering number			Equivalent bore diameter B [in]	$\dot{V}_n$ air [SCFM]				$\dot{M}$ saturated steam [lb/hr]			
	Type	Material number			$p$ [psi]				$p$ [psi]			
		17	30									
		Stainless steel 316Ti	Brass		7	30	75	145	7	30	75	145
Approx. 70°–90°	679.037		●	0.047	0.9	1.8	3.5	6.5	2.6	5.1	10.1	18.3
	679.085	●	●	0.051	1.2	2.4	4.7	8.7	3.5	6.8	13.4	24.4
	679.117	●	●	0.059	1.2	2.5	4.9	9.1	3.8	7.3	14.3	25.8
	679.165	●	●	0.071	1.5	3.0	6.1	11.1	4.4	9.0	17.6	31.5
	679.255	●	●	0.083	2.1	4.3	8.5	15.7	6.2	12.6	24.7	44.5
	679.365	●	●	0.110	3.7	7.5	15.0	27.4	11.0	22.0	43.1	77.7
	679.415	●	●	0.142	6.0	12.0	24.0	43.9	17.6	35.1	69.1	124.8
679.495	●	●	0.169	9.2	18.3	36.6	67.1	27.3	54.6	106.8	192.6	

#### Assembly example



Ordering example: Type 679.037 + Material no. 30 = Ordering no. 679.037.30



Assembly accessories can be found in Chapter 12 "Accessories".