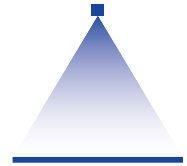


➤➤ Nozzle systems for surface treatment

Series 676 Easy-Clip



Features:

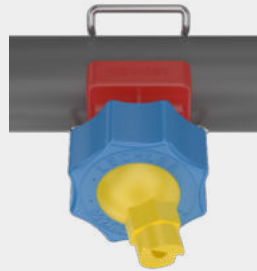
- Simple, quick nozzle assembly without the need for tools
- All-round 30° swivelling
- Easy adjustment and cleaning

Applications:

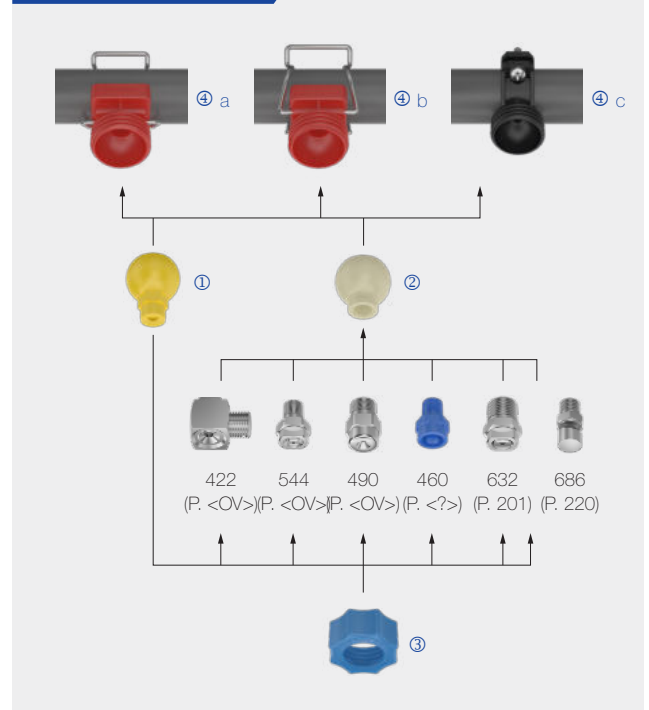
- Degreasing
- Phosphating in surface treatment
- Industrial cleaning
- Container washers

Materials:

- Clamp: Stainless steel 301
- Gasket: EPDM
- Cylinder pin, screw, screw unit: Stainless steel 316L
- Body, retaining nut: Polypropylene, glass fibre reinforced
- Ball nozzle, ball joint: Polypropylene



Assembly example



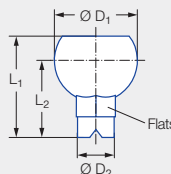
Sets – series 676 Easy-Clip

Designation	Spray angle	Ordering number	Nozzle Color	V̇ [gal/min]				
				p [psi]				
				7	15	20	liters per minute 2 bar	30
Set 1 consisting of: Ball nozzle Single clamp for 1 1/4" pipe Retaining nut	60°	676.724.53.31	Grey	0.82	1.20	1.38	6.30	1.69
		676.764.53.31	Brown	1.04	1.52	1.75	8.00	2.15
		676.804.53.31	Purple	1.30	1.90	2.19	10.00	2.69
		676.844.53.31	Yellow	1.62	2.37	2.74	12.50	3.36
		676.884.53.31	Red	2.08	3.04	3.51	16.00	4.30
		676.904.53.31	Blue	2.36	3.46	3.99	18.20	4.89
676.924.53.31	Green	2.60	3.80	4.39	20.00	5.37		

Designation	Ordering number	Ball Color	BSPP	Matches series
	Type			
Set 2 consisting of: Ball joint Single clamp for 1 1/4" pipe Retaining nut	092.081.53.AB	Beige	1/8	460, 490, 632, 686, 610, 544
	092.081.53.AD	Beige	1/4	422, 460, 490, 544, 612, 632, 686
	092.081.53.AF	Beige	3/8	422, 460, 490, 632, 686, 688
	092.081.53.AH	Beige	1/2	422, 460, 490, 632, 686

Individual parts – series 676 Easy-Clip

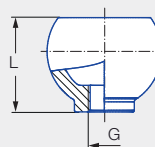
① Ball nozzle



Dimensions [in]				
L ₁	L ₂	Ø D ₁	Ø D ₂	Flats (mm)
1.63	1.24	1.34	0.59	16.0

Designation	Spray angle	Ordering number Type	Nozzle Color	V̇ [gal/min]				
				p [psi]				
				7	15	20	liters per minute 2 bar	30
① Ball nozzle	60°	676.724.53.30.01	Grey	0.82	1.20	1.38	6.30	1.69
		676.764.53.30.01	Brown	1.04	1.52	1.75	8.00	2.15
		676.804.53.30.01	Purple	1.30	1.90	2.19	10.00	2.69
		676.844.53.30.01	Yellow	1.62	2.37	2.74	12.50	3.36
		676.884.53.30.01	Red	2.08	3.04	3.51	16.00	4.30
		676.904.53.30.01	Blue	2.36	3.46	3.99	18.20	4.89
676.924.53.30.01	Green	2.60	3.80	4.39	20.00	5.37		
Blind nozzle	–	092.080.53.00.01	Grey	–	–	–	–	–

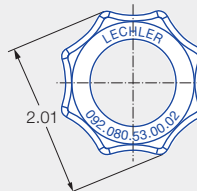
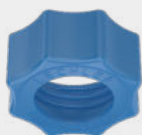
② Ball joint



Designation	Ordering number	Ball Color	BSPP	L [in]	Matches series
	Type				
② Ball joint	092.080.53.AB.01	Beige	1/8	1.12	460, 490, 632, 686, 610, 544
	092.080.53.AD.01*	Beige	1/4	1.28	422, 460, 490, 544, 612, 632, 686
	092.080.53.AF.01*	Beige	3/8	1.24	422, 460, 490, 632, 686, 688
	092.080.53.AH.01	Beige	1/2	1.30	422, 460, 490, 632, 686

* Also available with NPT connection

③ Retaining nut



Designation	Ordering number
	Type
③ Retaining nut	092.080.53.00.02

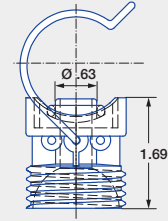


➤➤ Nozzle systems for surface treatment

Series 676 Easy-Clip

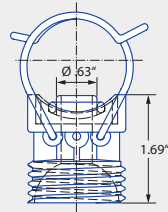
④ a Single clamp

092.08x.53.00



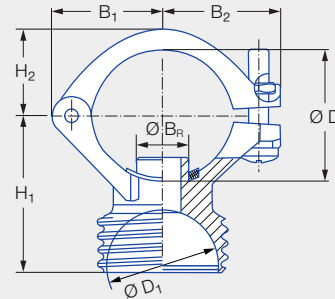
④ b Double clamp

092.09x.53.00



④ c Eyelet clamp

090.0x3.53.43.10



Designation	Ordering number	Dimensions [in]					Ø B _R ¹ [in]	Recommended bore diameter [in]	Pipe Ø (Ø D) [in]	Weight [lb]
		Type	B ₁	B ₂	H ₁	H ₂				
④ a Single clamp	092.080.53.00	–	–	–	–	–	0.64*	0.65 – 0.67	1" (1.26 – 1.36)	0.08
	092.081.53.00	–	–	–	–	–	0.64*	0.65 – 0.67	1 1/4" (1.57 – 1.69)	0.08
	092.082.53.00	–	–	–	–	–	0.64*	0.65 – 0.67	1 1/2" (1.81 – 1.93)	0.09
	092.083.53.00	–	–	–	–	–	0.64*	0.65 – 0.67	2" (2.28 – 2.44)	0.09
④ b Double clamp	092.090.53.00	–	–	–	–	–	0.64*	0.65 – 0.67	1" (1.26 – 1.36)	0.10
	092.091.53.00	–	–	–	–	–	0.64*	0.65 – 0.67	1 1/4" (1.57 – 1.69)	0.11
	092.092.53.00	–	–	–	–	–	0.64*	0.65 – 0.67	1 1/2" (1.81 – 1.93)	0.11
	092.093.53.00	–	–	–	–	–	0.64*	0.65 – 0.67	2" (2.28 – 2.44)	0.11
④ c Eyelet clamp	090.023.53.43.10	1.18	1.26	1.75	0.91	1.34	0.64*	0.65 – 0.67	1" (1.26 – 1.36)	0.11
	090.033.53.43.10	1.30	1.42	1.89	1.06	1.34	0.64*	0.65 – 0.67	1 1/4" (1.57 – 1.69)	0.11
	090.043.53.43.10	1.42	1.38	2.05	1.18	1.34	0.64*	0.65 – 0.67	1 1/2" (1.81 – 1.93)	0.11

¹ Ø B_R = spigot diameter.

* Other spigot diameters available upon request