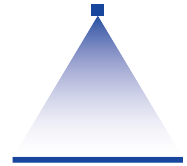


Low pressure tongue-type nozzles

Series 686



Features:

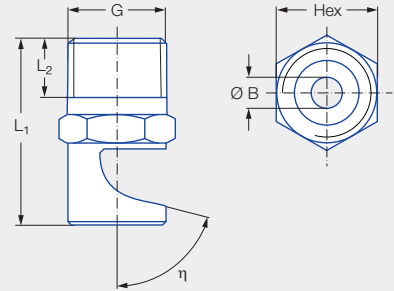
- Sharply delimited, powerful flat fan spray
- Large spray angle
- Non-clogging

Applications:

- Foam control
- Cleaning processes
- Washing processes

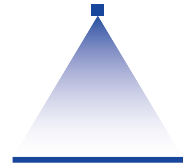


Series 686



Type	NPT	Connection	Dimensions [in]			Weight [lb] Brass
			L ₁	L ₂	Hex	
686.366	1/8	BA	0.91	0.26	7/16	0.03
686.406	1/8	BA	0.91	0.26	7/16	0.03
686.686	1/4	BC	1.16	0.38	9/16	0.05
686.726	1/8	BA	0.98	0.26	7/16	0.03
686.806	1/4	BC	1.30	0.38	9/16	0.05
686.886	1/4	BC	1.38	0.38	9/16	0.07
686.926	3/8	BE	1.52	0.40	11/16	0.07
686.368	1/8	BA	0.79	0.26	7/16	0.03
686.408	1/8	BA	0.91	0.26	7/16	0.03
686.448	1/4	BC	0.94	0.38	9/16	0.05
686.488	1/8	BA	0.91	0.26	7/16	0.03
686.488	1/4	BC	0.94	0.38	9/16	0.05
686.528	1/8	BA	0.91	0.26	7/16	0.03
686.528	1/4	BC	0.94	0.38	9/16	0.05
686.568	1/8	BA	0.91	0.26	7/16	0.03
686.568	1/4	BC	0.94	0.38	9/16	0.05
686.608	1/8	BA	0.91	0.26	7/16	0.03
686.608	1/4	BC	0.94	0.38	9/16	0.05
686.648	1/4	BC	0.94	0.38	9/16	0.05
686.688	1/8	BA	0.91	0.26	7/16	0.03
686.688	1/4	BC	1.06	0.38	9/16	0.05
686.728	1/8	BA	0.91	0.26	7/16	0.03
686.728	1/4	BC	1.06	0.38	9/16	0.05
686.768	1/4	BC	1.06	0.38	9/16	0.05
686.808	1/8	BA	0.91	0.26	7/16	0.03
686.808	1/4	BC	1.06	0.38	9/16	0.05
686.828	1/4	BC	1.06	0.38	9/16	0.05
686.848	1/4	BC	1.06	0.38	9/16	0.05
686.868	1/4	BC	1.10	0.38	9/16	0.05
686.888	1/4	BC	1.10	0.38	9/16	0.05
686.908	1/4	BC	1.10	0.38	9/16	0.05
686.928	3/8	BE	1.18	0.40	11/16	0.07
686.968	1/2	BG	1.46	0.52	7/8	0.13
686.988	3/8	BE	1.26	0.40	11/16	0.07
686.988	1/2	BG	1.46	0.52	7/8	0.13

Also suitable for air or saturated steam (see Page 218).




Spray angle	Deflection angle η	Ordering number								Bore diameter B [in]	V water [gal/min]					Spray width B [in] (at p = 30 psi)
		Material number			Connection				p [psi]							
		16	30	5E	1/8 NPT	1/4 NPT	3/8 NPT	1/2 NPT	15		20	30	liters per minute	75	H = 10 [in]	
		Type	Stainless steel 303	Brass									PVDF			2 bar
90°	75°	686.366		●		BA			0.03	0.12	0.14	0.17	0.63	0.26	18	
		686.406	●	●		BA			0.04	0.19	0.22	0.27	1.00	0.42	18	
	40°	686.686	●	●		BC			0.09	0.95	1.10	1.34	5.00	2.12	20	
		686.726		●		BA			0.11	1.20	1.38	1.69	6.30	2.68	21	
		686.806	●	●		BC			0.13	1.90	2.19	2.69	10.00	4.25	21	
		686.886	●			BC			0.17	3.04	3.51	4.30	16.00	6.80	21	
686.926	●				BE		0.19	3.80	4.39	5.37	20.00	8.50	21			
140°	75°	686.368	●	●		BA			0.03	0.12	0.14	0.17	0.63	0.26	49	
		686.408	●	●		BA			0.04	0.19	0.22	0.27	1.00	0.42	50	
		686.448	●	●			BC		0.047	0.24	0.27	0.34	1.25	0.53	50	
		686.488	●	●		BA	BC		0.05	0.30	0.35	0.43	1.60	0.68	50	
		686.528	●	●		BA	BC		0.06	0.38	0.44	0.54	2.00	0.85	50	
		686.568	●	●	● ¹	BA	BC		0.07	0.47	0.55	0.67	2.50	1.06	51	
		686.608	●	●		BA	BC		0.075	0.60	0.69	0.85	3.15	1.34	51	
		686.648	●	●			BC		0.087	0.76	0.88	1.07	4.00	1.70	52	
		686.688	●	●		BA	BC		0.09	0.95	1.10	1.34	5.00	2.12	52	
		686.728	●	●		BA	BC		0.11	1.20	1.38	1.69	6.30	2.68	53	
		686.768	●	●			BC		0.12	1.52	1.75	2.15	8.00	3.40	53	
		686.808	●	●		BA	BC		0.13	1.90	2.19	2.69	10.00	4.25	54	
		686.828	●	●			BC		0.14	2.13	2.46	3.01	11.20	4.76	54	
		686.848	●	●			BC		0.15	2.37	2.74	3.36	12.50	5.31	54	
		686.868	●	●			BC		0.16	2.66	3.07	3.76	14.00	5.95	54	
		686.888	●	●			BC		0.17	3.04	3.51	4.30	16.00	6.80	54	
		686.908	●	●			BC		0.18	3.42	3.95	4.84	18.00	7.65	54	
		686.928	●					BE	0.19	3.80	4.39	5.37	20.00	8.50	54	
686.968		●				BG	0.21	4.75	5.48	6.72	25.00	10.62	54			
686.988	●				BE	BG	0.22	5.32	6.14	7.52	28.00	11.89	54			

¹ Only available with code BA.

Conversion formula for this series: $\dot{V}_2 = \dot{V}_1 \cdot \sqrt{\frac{p_2}{p_1}}$

Ordering Type + Material no. + Code = Ordering no.
 example: 686.366 + 30 + BA = 686.366.30.BA

 Assembly accessories can be found in Chapter 12 "Accessories".