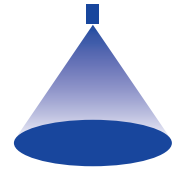


➤ Axial-flow full cone nozzles Series 468



Features:

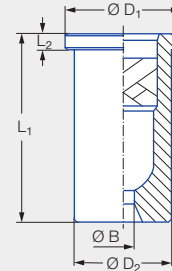
- Extremely uniform liquid distribution
- Assembly with retaining nut

Applications:

- Surface spraying
- Chemical process engineering
- Cleaning and washing processes
- Water treatment



Series 468



Connection	Dimensions [in]			Weight [lb] (brass)
	L ₂	Ø D ₁	Ø D ₂	
Assembly with retaining nut 3/8 BSPP	0.08	0.58	0.50	0.04

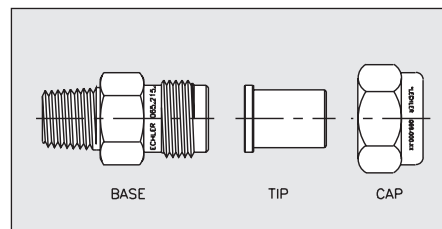
Spray angle	Ordering number				Bore diameter B [in]	Narrowest free cross sections Ø [in]	L ₁ [in]	V̇ water [gal/min]						Spray diameter D [mm] (at p = 30 psi)		
	Type	Material number						p [psi]								
		17 ¹	30	5E				7	15	30	Liters per min. 2 bar	45	75			145
60°	468.604	●	●		0.08	0.06	0.71	0.47	0.64	0.84	3.15	0.99	1.22	1.58	11	22
	468.644		●	●	0.09	0.07	0.96	0.60	0.81	1.07	4.00	1.26	1.55	2.01	11	22
	468.684		●		0.10	0.08	0.96	0.75	1.01	1.34	5.00	1.57	1.93	2.51	12	23
	468.724	●	●		0.11	0.08	0.96	0.94	1.28	1.69	6.30	1.98	2.43	3.17	12	23
90°	468.526	●	●	●	0.06	0.05	0.71	0.30	0.41	0.54	2.00	0.62	0.77	1.01	18	31
	468.846	●	●		0.16	0.13	0.96	1.87	2.54	3.35	12.50	3.94	4.83	6.29	20	36
120°	468.368		●		0.04	0.028	0.71	0.09	0.13	0.17	0.63	0.20	0.24	0.32	29	69
	468.408	●	●		0.05	0.033	0.71	0.15	0.20	0.27	1.00	0.31	0.39	0.50	29	69
	468.488	●	●		0.060	0.04	0.71	0.24	0.32	0.43	1.60	0.50	0.62	0.80	29	69
	468.528	●	●		0.065	0.05	0.71	0.30	0.40	0.54	2.00	0.63	0.77	1.01	29	69

¹ We reserve the right to supply material 316Ti or 316L under material no. 17.

Also available in metric thread.

Bases and Caps for Mounting

Inlet NPT Male	Outlet Male	Part No.	Standard Materials: 17 316 SS 30 Brass
1/4"	11/16 x 16	065. 215. XX. 10	
3/8"	11/16 x 16	065. 211. XX. 10	
1/4"	3/8 BSPP	065. 215. XX. 11	
3/8"	3/8 BSPP	065. 215. XX. 12	
Caps			Other materials available.
To fit 11/16x16		069. 000. XX. 00	
To fit 3/8 BSPP		065. 200. XX. 00	



Conversion formula for this series: $\dot{V}_2 = \dot{V}_1 \cdot \left(\frac{p_2}{p_1}\right)^{0.4}$
(≤ 10 bar)

Ordering Type + Material no. = Ordering no.
example: 468.604 + 17 = 468.604.17

Assembly accessories can be found in Chapter 12 "Accessories".