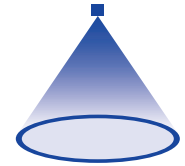


# ➤ Axial-flow hollow cone nozzles

## Series 2TR



### Features:

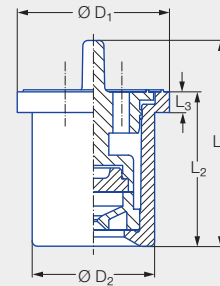
- Fine, uniform atomization
- Assembly with retaining nut

### Applications:

- Sprinkling
- Adiabatic cooling
- Cooling
- Humidification of air



Series 2TR



Connection	Dimensions [in]					Weight [lb]
	L <sub>1</sub>	L <sub>2</sub>	L <sub>3</sub>	Ø D <sub>1</sub>	Ø D <sub>2</sub>	
Assembly with retaining nut 3/8 BSPP	0.79	0.59	0.08	0.58	0.47	0.007

Spray angle	Ordering number		Color	Bore diameter B [in]	Narrowest free cross section Ø [in]	V̇ water [gal/min]							Spray diameter D [in] (at p = 75 bar)
	Type	Mat. no.				p [psi]							
		C8				Housing: POM Insert: Ceramic	15	30	45	75	Liters per min. 5 bar	100	145
80°	2TR.245	●	Purple	0.026	0.022	–	0.04	0.05	0.07	<b>0.25</b>	0.08	0.09	9
	2TR.275	●	Black	0.032	0.028	0.04	0.06	0.07	0.09	<b>0.35</b>	0.11	0.13	10
	2TR.305	●	Orange	0.035	0.032	0.06	0.09	0.11	0.14	<b>0.51</b>	0.16	0.19	13
	2TR.345	●	Green	0.043	0.035	0.09	0.13	0.16	0.20	<b>0.76</b>	0.24	0.28	17
	2TR.365	●	Yellow	0.055	0.037	0.12	0.18	0.21	0.28	<b>1.03</b>	0.32	0.38	19
	2TR.405	●	Blue	0.067	0.043	0.18	0.26	0.32	0.41	<b>1.53</b>	0.47	0.57	21
	2TR.445	●	Red	0.079	0.047	0.24	0.34	0.42	0.54	<b>2.02</b>	0.63	0.75	22
2TR.485	●	Brown	0.087	0.051	0.30	0.42	0.52	0.67	<b>2.50</b>	0.78	0.93	22	

### Assembly example



Conversion formula for this series:  $\dot{V}_2 = \dot{V}_1 \cdot \sqrt{\frac{p_2}{p_1}}$

Ordering example: Type 2TR.245 + Material no. C8 = Ordering no. 2TR.245.C8



Assembly accessories can be found in Chapter 12 "Accessories".