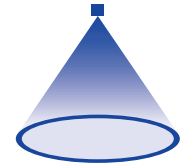


➤ Tangential-flow hollow cone nozzles

Series 304/306/307

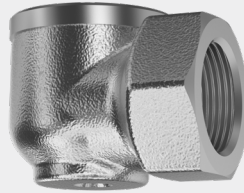


Features:

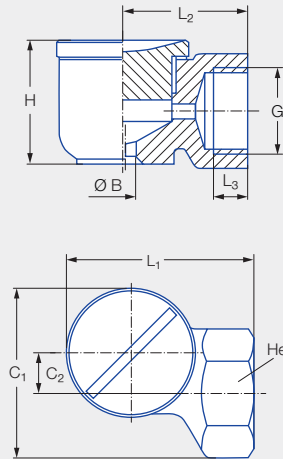
- Uniform atomization
- Clog-resistant nozzle without swirl insert

Applications:

- Storage tank cooling
- Foam control
- Dust control
- Surface treatment
- Absorption



Series 304/306/307



Series	G	Dimensions [in]							Weight [lb] (Brass)
		C ₁	C ₂	H	L ₁	L ₂	L ₃	Hex (mm)	
304	1/2 BSPP	1.69	0.43	1.30	1.81	1.18	0.43	27	0.45
306/307	3/4 BSPP	2.13	0.51	1.69	2.36	1.57	0.51	36	0.90

Spray angle	Ordering number		Bore diameter B [in]	Narrowest free cross section Ø [in]	V̇ water [gal/min]								Spray diameter D [in] (at p = 30 psi)		
	Type	Mat. no.			p [psi]								H = 10 [in]	H = 20 [in]	
		1Y			30	5	10	30	Liters per min. 2 bar	45	75	100			145
90°	304.706	●	●	0.201	0.201	0.61	0.87	1.50	5.60	1.84	2.38	2.75	3.31	20	39
	304.796	●	●	0.350	0.236	1.04	1.47	2.55	9.50	3.13	4.04	4.66	5.61	20	39
	306.906	●	●	0.354	0.354	1.97	2.79	4.84	18.00	5.92	7.65	8.83	10.63	22	41
	306.976	●	●	0.531	0.394	2.91	4.11	7.12	26.50	8.72	11.26	13.00	15.65	22	41
130°	304.818		●	0.472	0.197	1.16	1.64	2.85	10.60	3.49	4.50	5.20	6.26	47	83
	304.898	●	●	0.472	0.276	1.86	2.64	4.57	17.00	5.59	7.22	8.34	10.04	49	87
	306.978		●	0.748	0.287	2.91	4.11	7.12	26.50	8.72	11.26	13.00	15.65	51	93
	307.018	●	●	0.748	0.339	3.67	5.20	9.00	33.50	11.02	14.23	16.43	19.79	51	93

Available in NPT with adaptor add-on.

Conversion formula for this series: $\dot{V}_2 = \dot{V}_1 \cdot \sqrt{\frac{p_2}{p_1}}$

Ordering Type + Material no. = Ordering no.
 example: 304.706 + 1Y = 304.706.1Y



Assembly accessories can be found in Chapter 12 "Accessories".