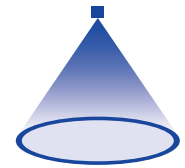


➤ Tangential-flow hollow cone nozzles, plastic version

Series 302

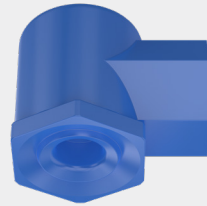


Features:

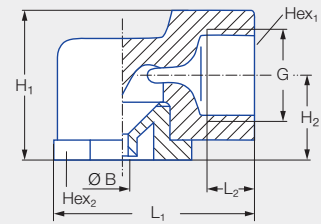
- Uniform atomization
- Clog resistant nozzle without swirl insert

Applications:

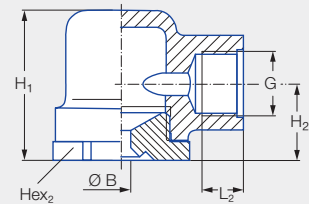
- Humidification
- Dust control
- Sprinkling
- Foam control
- Adiabatic cooling



Series 302




Type 302.32x-302.48x

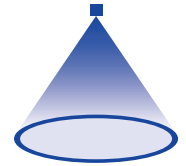


Type 302.52x-302.96x

Type	G	Dimensions [in]						Weight [lb]	P _{max} [psi]
		H ₁	H ₂	L ₁	L ₂	Hex ₁ (mm)	Hex ₂ (mm)		
302.32x-302.48x	3/8 NPT/BSPP	1.08	0.65	1.71	0.39	22	22	0.03	75
302.52x-302.96x	3/8 NPT/BSPP	1.34	0.73	1.46	0.39	22	22	0.04	75

Spray angle	Ordering number						Bore diameter B [in]	Narrowest free cross section Ø [in]	V̇ water [gal/min]						Spray diameter D [in] (at p = 30 psi)	
	Type	Mat. no.			Connection				p [psi]							
		51	5E	53	Female											
		PA	PVDF	PP	3/8" NPT	3/8" BSPP			10	15	30	Liters per min.	45	75	H = 10 [in]	H = 20 [in]
60°	302.364	●		●	-	00	0.05	0.05	0.10	0.12	0.17	0.63	0.21	0.27	13	24
	302.464	●		●	-	00	0.08	0.08	0.22	0.27	0.38	1.40	0.46	0.59	13	24
90°	302.326	●	●		-	00	0.04	0.04	0.06	0.08	0.11	0.40	0.13	0.17	19	30
	302.366	●	●		-	00	0.05	0.05	0.10	0.12	0.17	0.63	0.21	0.27	19	31
	302.406	●	●	●	-	00	0.06	0.06	0.16	0.19	0.27	1.00	0.33	0.42	19	32
	302.486	●		●	-	00	0.08	0.08	0.25	0.30	0.43	1.60	0.53	0.68	20	33
	302.526	●		●	BF	00	0.20	0.08	0.31	0.38	0.54	2.00	0.66	0.85	20	34
	302.566	●		●	-	00	0.20	0.09	0.39	0.47	0.67	2.50	0.82	1.06	20	35
	302.606	●		●	BF	00	0.20	0.13	0.49	0.60	0.85	3.15	1.04	1.34	21	37
	302.686	●			BF	00	0.30	0.13	0.78	0.95	1.34	5.00	1.65	2.12	21	40
	302.766	●			BF	00	0.35	0.17	1.24	1.52	2.15	8.00	2.63	3.40	21	41
	302.846	●		●	BF	00	0.43	0.20	1.94	2.37	3.36	12.50	4.11	5.31	21	41
	302.886	●	●	●	BF	00	0.43	0.25	2.48	3.04	4.30	16.00	5.26	6.80	21	41
302.966	●			BF	00	0.43	0.34	3.88	4.75	6.72	25.00	8.23	10.62	21	41	





Spray angle	Ordering number						Bore diameter B [in]	Narrowest free cross section Ø [in]	V̇ water [gal/min]						Spray diameter D [in] (at p = 30 psi)	
	Type	Mat. no.			Connection				p [psi]							
		51	5E	53	Female				10	15	30	Liters per min. 2 bar	45	75		
		PA	PVDF	PP	3/8" NPT	3/8" BSPP										
130°	302.328		●			00	0.05	0.03	0.06	0.08	0.11	0.40	0.13	0.17	25	37
	302.368	●	●			00	0.07	0.04	0.10	0.12	0.17	0.63	0.21	0.27	26	40
	302.408	●	●			00	0.14	0.05	0.16	0.19	0.27	1.00	0.33	0.42	27	44
	302.488	●		●		00	0.20	0.06	0.25	0.30	0.43	1.60	0.53	0.68	28	49
	302.528	●			BF	00	0.20	0.08	0.31	0.38	0.54	2.00	0.66	0.85	30	52
	302.568	●				00	0.20	0.09	0.39	0.47	0.67	2.50	0.82	1.06	31	56
	302.608	●	*●	●	BF	00*	0.20	0.13	0.49	0.60	0.85	3.15	1.04	1.34	32	59
	302.648	●			BF	00	0.30	0.12	0.62	0.76	1.07	4.00	1.32	1.70	34	63
	302.688	●			BF	00	0.30	0.13	0.78	0.95	1.34	5.00	1.65	2.12	35	65
	302.728	●			BF	00	0.30	0.16	0.98	1.20	1.69	6.30	2.07	2.68	36	67
	302.768	●			BF	00	0.35	0.17	1.24	1.52	2.15	8.00	2.63	3.40	37	68
	302.848	●			BF	00	0.43	0.20	1.94	2.37	3.36	12.50	4.11	5.31	38	69
	302.888	●		●	BF	00	0.43	0.25	2.48	3.04	4.30	16.00	5.26	6.80	38	70
302.968	*●	●		BF	00*	0.43	0.34	3.88	4.75	6.72	25.00	8.23	10.62	39	71	

* Material only available in BSPP

Conversion formula for this series: $\dot{V}_2 = \dot{V}_1 \cdot \sqrt{\frac{p_2}{p_1}}$

Ordering Type + Material no. = Ordering no.
 example: 302.328 + 5E = 302.328.5E



Assembly accessories can be found in Chapter 12 "Accessories".