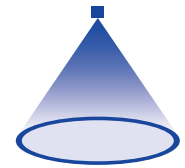


➤ Tangential-flow hollow cone nozzles, plastic version with bayonet quick-release system

Series 302

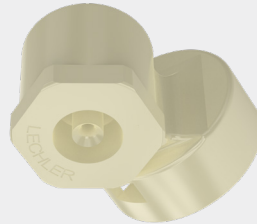


Features:

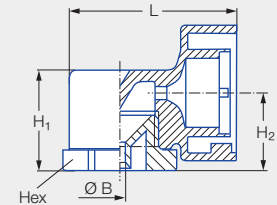
- Uniform atomization
- Clog-resistant nozzle without swirl insert
- Quick and secure assembly thanks to bayonet quick-release system
- Fixed alignment

Applications:

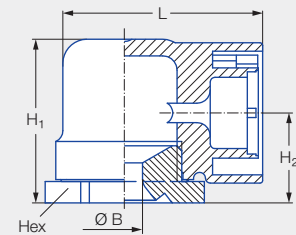
- Humidification
- Dust control
- Sprinkling
- Foam control
- Adiabatic cooling



Series 302



Type 302.32x–302.54x



Type 302.6xx.51.KB

Type	Connection	Dimensions [in]				Weight [lb]	P _{max} [psi]
		H ₁	H ₂	L	Hex (mm)		
302.32x–302.54x	KB	0.86	0.66	1.42	22	0.03	75
302.6xx.51	KB	1.34	0.75	1.65	30	0.04	75

Spray angle	Ordering number				Bore diameter B [in]	Narrowest free cross section Ø [in]	V̇ water [gal/min]						Spray diameter D [in] (at p = 30 psi)	
	Type	Mat. no.		Connection			p [psi]						H = 10 [in]	H = 20 [in]
		51	56				10	15	30	Liters per min. 2 bar	45	75		
45°	302.503	●		KB	0.081	0.081	0.28	0.34	0.48	1.80	0.59	0.76	8	17
60°	302.464		●	KB	0.077	0.077	0.22	0.27	0.38	1.40	0.46	0.59	11	21
80°	302.545		●	KB	0.091	0.091	0.35	0.43	0.60	2.24	0.74	0.95	18	32
90°	302.326	●	●	KB	0.041	0.041	0.06	0.08	0.11	0.40	0.13	0.17	16	28
	302.406	●	●	KB	0.061	0.061	0.16	0.19	0.27	1.00	0.33	0.42	16	29
	302.486	●		KB	0.083	0.083	0.25	0.30	0.43	1.60	0.53	0.68	18	31
	302.606	●		KB	0.197	0.126	0.49	0.60	0.85	3.15	1.04	1.34	21	39
130°	302.686		●	KB	0.300	0.133	0.78	0.95	1.34	5.00	1.65	2.12	21	40
	302.368		●	KB	0.051	0.051	0.10	0.12	0.17	0.63	0.21	0.27	26	43
	302.408	●	●	KB	0.079	0.079	0.16	0.19	0.27	1.00	0.33	0.42	27	47
	302.468	●		KB	0.094	0.094	0.22	0.27	0.38	1.40	0.46	0.59	27	49
	302.488	●		KB	0.108	0.108	0.25	0.30	0.43	1.60	0.53	0.68	28	51

Conversion formula for this series: $\dot{V}_2 = \dot{V}_1 \cdot \sqrt{\frac{p_2}{p_1}}$

Ordering example: Type 302.503 + Material no. 51 + Code KB = Ordering no. 302.503.51.KB



Assembly accessories can be found in Chapter 12 "Accessories".