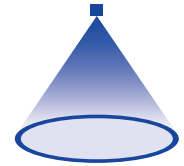


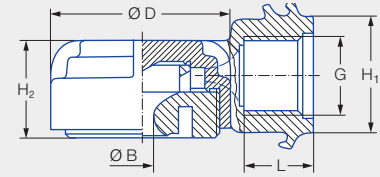
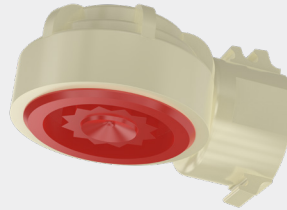
# ➤ Tangential-flow hollow cone nozzles

## Series 350



### Features:

- High performance nozzle for humidification
- Very narrow droplet size spectrum
- Extremely uniform liquid distribution over the entire spray pattern
- Quick-release clamp unit available for pipe mounting




### Applications:

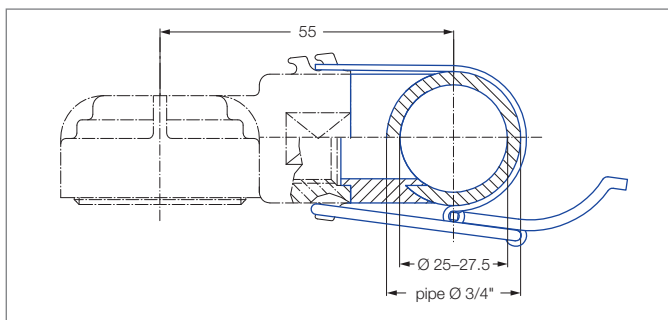
- Foam control
- Dust control
- Surface treatment
- Absorption

Series 350

G	Dimensions [in]				Weight [lb]	P <sub>max</sub> [psi]
	H <sub>1</sub>	H <sub>2</sub>	L	Ø D		
3/8 BSPP	0.94	0.79	0.55	1.46	0.08	300

Spray angle	Ordering number		Bore diameter B [in]	Narrowest free cross section Ø [in]	V̇ water [gal/min]								Spray diameter D [in] (at p = 30 psi)		
	Type	Mat. no.			p [psi]									H = 10 [in]	H = 20 [in]
		56			10	15	30	Liters per min. 2 bar	45	75	100	145			
130°	350.368	●	0.06	0.03	0.10	0.12	0.17	<b>0.63</b>	0.21	0.27	0.31	0.37	37	49	
	350.608	●	0.20	0.06	0.49	0.60	0.85	<b>3.15</b>	1.04	1.34	1.55	1.86	39	77	

### Accessories:



Recommended bore diameter 18 mm.

Quick-release clamp unit: Ordering no. 035.030.15.05.00.0.

Consisting of: Stainless steel clamp, polyurethane gasket.

Conversion formula for this series:  $\dot{V}_2 = \dot{V}_1 \cdot \sqrt{\frac{p_2}{p_1}}$

Ordering Type + Material no. = Ordering no.  
example: 350.368 + 56 = 350.368.56



Assembly accessories can be found in Chapter 12 "Accessories".