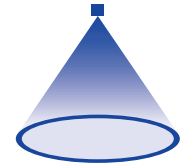


➤ Eccentric hollow cone nozzles

Series 373 Ramp Bottom

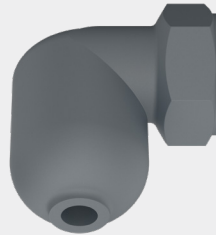


Features:

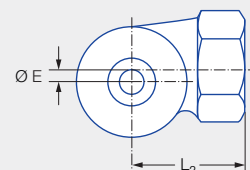
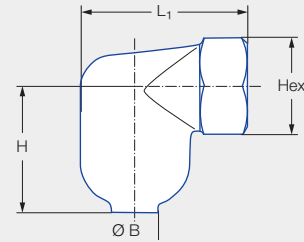
- Fine, uniform atomization even at low pressure
- Patented swirl chamber with built-in ramp extends service life

Applications:


- Gas cooling
- Water recooling
- Dust control



Series 373



Connection	G	Dimensions [in]					Weight [lb]
		H	L ₁	L ₂	E	Hex (mm)	
BN	1 NPT	2.05	2.64	1.77	0.25	41	0.6
BQ	1 1/4 NPT	2.56	3.03	2.01	0.31	48	1.2
BS	1 1/2 NPT	3.19	3.82	2.56	0.31	58	2.0
BW	2 NPT	3.69	4.25	4.50	0.50	71	2.7

Spray angle (at p = 40 psi)	Ordering number					Bore diameter B [in]	V̇ water [gal/min]						Spray diameter D [in] (at p = 30 psi)		
	Type	Mat. no.	Connection				p [psi]						 H = 20 [in] H = 40 [in]		
		17	Female												
		Stainless steel 316	1 NPT	1 1/4 NPT	1 1/2 NPT		2 NPT	5	10	15	30	Liters per min. 2 bar	75	145	
70°	373.115	●	BN			0.45	6.91	9.77	11.97	16.93	63	26.76	37.21	26	47
80°	373.175	●	BN			0.51	8.77	12.41	15.2	21.49	80	33.98	47.25	31	57
75°	373.235	●		BQ		0.64	12.94	18.30	22.42	31.70	118	50.12	69.69	30	51
85°	373.285	●		BQ		0.81	17.55	24.82	30.39	42.98	160	67.96	94.50	31	53
85	373.325	●			BS	0.87	21.94	31.02	37.99	53.73	200	84.96	118.13	35	59
77°	373.365	●			BS	0.93	24.90	35.21	43.12	60.98	227	96.42	134.07	33	55
80°	373.445	●			BW	1.14	44.53	62.97	77.13	109.07	406	172.46	239.80	39	67
90°	373.465	●			BW	1.21	50.56	71.50	87.57	123.85	461	195.82	272.28	46	80

Other sizes and flow rates available upon request

Conversion formula for this series: $\dot{V}_2 = \dot{V}_1 \cdot \sqrt{\frac{p_2}{p_1}}$

Ordering Type + Material no. + Code = Ordering no.
 example: 373.115 + 17 + BN = 373.115.17.BN



Assembly accessories can be found in Chapter 12 "Accessories".