

Rotating cleaning nozzle PTFE Whirly Series 573/583

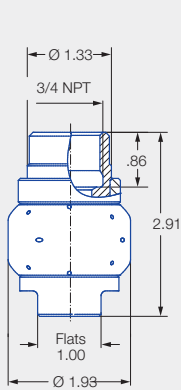


Features:

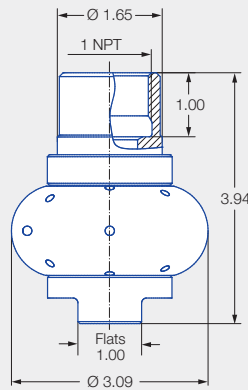
- Made entirely of PTFE
- Slip-on connection conforms to 3-A
- Suitable for corrosive environments
- Suitable for very hygienic requirements (e.g. contact with food)



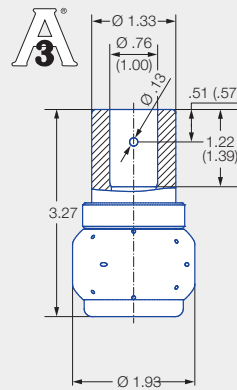
Series 573/583



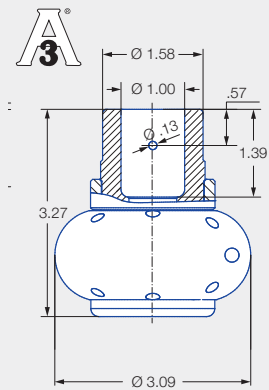
Female thread
3/4 NPT



Female thread
1 NPT



3/4" and 1" slip-on connection
(conforms to 3-A)
Dimension of the slip-on
connection according to
ASME-BPE (OD tube)



1" slip-on connection
(conforms to 3-A)
Dimension of the slip-on
connection according to
ASME-BPE (OD tube)

Data in brackets refers to
1" version marked with "1".

	Max. tank diameter [ft]	0	5	10	15	20	25	30
--	-------------------------	---	---	----	----	----	----	----

Technical data:



Maximum operating temperature
203 °F



Maximum ambient temperature
392 °F



Installation
Operation in every installation position



Bearing
Slide bearing made of PTFE



Material
PTFE



Weight
3/4" slip-on 0.4 lbs
1" slip-on 1.98 lbs
3/4" slip-on 0.4 lbs
1" slip-on 1.98 lbs



Surface quality
Ra ≤ 0.8 µm
OUTSIDE



Surface quality
Ra ≤ 0.8 µm
INSIDE



Steam suitability
Not suitable



Insertion diameter
1.93–3.09 in



Recommended filter
Line strainer with a mesh size of 0.3 mm/50 mesh








Recommended operating pressure
30 psi

Function video
www.lechler.com/ptfewhirly
Or scan the QR code.






Spray angle	Ordering number					Narrowest free cross section \varnothing [in]	\dot{V} water [gal/min]				Pin	Max. tank diameter [ft]
	Type	Connection					p [psi] ($p_{max} = 85$ psi)					
		3/4" NPT	1" NPT	3/4" Slip-on	1" Slip-on		15	30	Liters per min. 2 bar	45		
 180°	583.114.55	BL		TF07*		.083	12.73	18.00	67	22.05	1	8
	583.264.55	BL		TF07*		.129	27.55	38.95	145	47.71	1	9
	583.344.55		BN			.279	42.74	60.45	225	74.03	2	10
 180°	573.114.55	BL		TF07*		.083	12.73	18.00	67	22.05	1	8
	573.264.55	BL		TF07*		.129	27.55	38.95	145	47.71	1	9
	573.344.55		BN			.232	42.74	60.45	225	74.03	2	10
 270°	583.116.55	BL		TF07*		0.09	12.73	18.00	67	22.05	1	8
	583.266.55	BL		TF07*		.133	27.55	38.95	145	47.71	1	9
	583.346.55		BN		TF10*	.232	42.74	60.45	225	74.03	2	10
 270°	573.116.55	BL		TF07*		0.09	12.73	18.00	67	22.05	1	8
	573.226.55	BL		TF07*		.133	27.55	38.95	145	47.71	1	9
	573.346.55		BN		TF10*	.232	42.74	60.45	225	74.03	2	10
 360°	583.119.55	BL		TF07*	TF101*	0.07	11.02	15.58	58	19.08	1	8
	583.209.55	BL		TF07*	TF101*	0.14	19.00	26.87	100	32.90	1	8
	583.269.55	BL		TF07*		0.19	27.55	38.95	145	47.71	1	9
	583.279.55		BN		TF10*	0.15	28.49	40.30	150	49.35	2	10
	583.349.55		BN		TF10*	0.22	42.74	60.45	225	74.03	2	10

BSPP thread available on request.

¹ See drawing 3 for details (Page 82).

* Complies with and is authorized to use with 

The maximum tank diameter applies to the recommended operating pressure and is meant as a recommendation only. The cleaning result is also affected by the type of soiling.

Compressed air should be used for dry blowing for a short time only. Operation above the recommended operating pressure has a negative impact on the cleaning result and wear.

Information about slip-on connections

- Pin made of stainless steel 316L supplied (Ordering no. Pin 1: 095.013.17.06.60, Pin 2: 095.013.17.06.61).
- Depending on the diameter of the adapter, the flow rate can increase due to a leakage between the adapter and the rotating cleaning nozzle.

Ordering	Type	+	Code	=	Ordering no.
example:	583.116.55	+	BL	=	583.116.55.BL