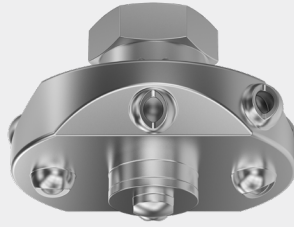


Rotating cleaning nozzle Gyro Series 577

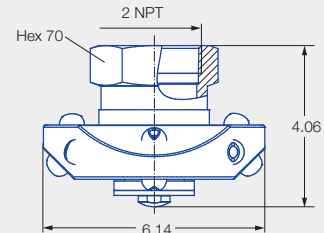
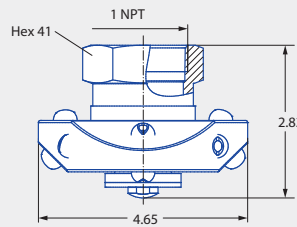


Features:

- Cleaning with powerful nozzle inserts
- Suitable for very large tanks
- Available with a wide range of flow rates
- Non clogging and large free cross sections



Series 577



Female thread

Female thread

	Max. tank diameter [ft]	0	5	10	15	20
--	--------------------------------	---	---	----	----	----

Technical data:



Maximum operating temperature
203 °F



Maximum ambient temperature
392 °F



Installation
Vertically downwards



Bearing
Slide bearing made of PTFE



Material
Stainless steel 1.4404 (316L), PTFE



Weight
1" 1.62 lbs
2" 4.19 lbs



Surface quality
Ra ≤ 0.8 µm
OUTSIDE



Surface quality
Ra ≤ 4.0 µm
INSIDE



Steam suitability
Conditionally suitable



Insertion diameter
4.65–6.14 in



Recommended filter
Line strainer with a mesh size of 0.3 mm/50 mesh



Recommended operating pressure
45 psi

Function video
www.lechler.com/gyro
Or scan the QR code.



Spray angle	Ordering number			V̇ water [gal/min]					Max. tank diameter [ft]
	Type	Connection		p [psi] (p _{max} = 75 psi)					
		1" Female NPT	2" Female NPT	15	30	45	Liters per min. 3 bar	75	
360° 	577.289.1Y	BN		31.02	43.87	53.73	200	69.37	11
	577.369.1Y	BN		49.01	69.32	84.89	316	109.60	13
	577.409.1Y		BW	61.11	86.43	105.85	394	136.65	14
	577.439.1Y		BW	73.37	103.75	127.07	473	164.05	15
	577.499.1Y		BW	102.22	144.55	177.04	659	228.56	18

BSPP thread available on request.

The maximum tank diameter applies to the recommended operating pressure and is meant as a recommendation only.

The cleaning result is also affected by the type of soiling.

Compressed air should be used for dry blowing for a short time only. Operation above the recommended operating pressure has a negative impact on the cleaning result and wear.

Contents of Gyro rebuild kit



The PTFE bearings can be replaced easily to extend the life of the unit. A rebuild kit contains: Bearing sleeves and complete instructions.

Size	Product code
1"	057.701.55.01
2"	057.702.55.01

Ordering **Type** + **Code** = **Ordering no.**
example: 577.289.1Y + BN = 577.289.1Y.BN

