

Extendable cleaning nozzle

PopUp Whirly

Series 5P5



Features:

- Designed for cleaning agitators or other spray shadow areas
- Compact design
- Can be installed flush with the wall



Series 5P5

Technical data:



Maximum operating temperature
203 °F
203 °F (ATEX)



Maximum ambient temperature
302 °F
284 °F (ATEX)



Installation
Operation in every installation position



Bearing
Slide bearing



Material
Stainless steel 1.4404 (316L), stainless steel 1.4571 (316Ti), stainless steel 1.4401 (316), FKM



Weight
.75 lbs



Surface quality
Ra ≤ 0.8 μm on process side, remaining housing Ra ≤ 1.6 μm



Surface quality
Ra ≤ 1.6 μm



Steam suitability
Not suitable



Insertion diameter
1.22 in

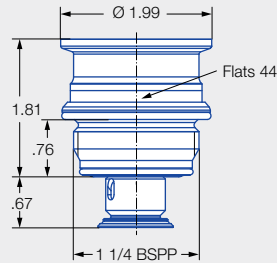


Recommended filter
Line strainer with a mesh size of 0.3 mm/50 mesh

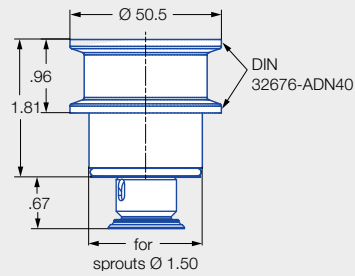


Recommended operating pressure
30 psi
Opening pressure: approx. 4 psi, closing pressure: approx. 4 psi



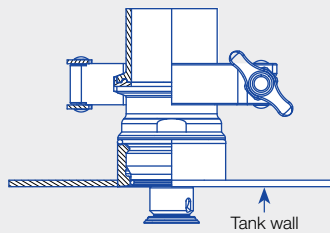


Male thread

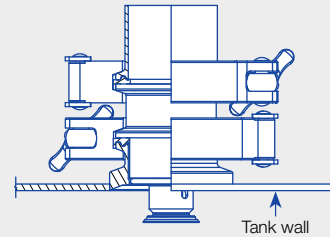


Tri-Clamp connection

Installation situation



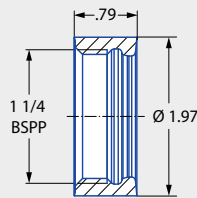
Male thread



Tri-Clamp connection

Weld-in socket for threaded connection

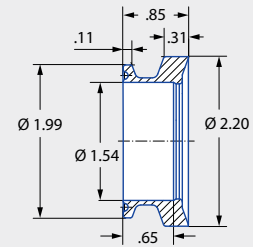
The thread is hygienically encapsulated with two O-rings (included in the scope of delivery of the PopUp Whirly).



Order no.: 050.020.1Y.AQ.00
Material: Stainless steel 1.4404 (316L)

Weld-in flange for Tri-Clamp connection

A joint clamp in accordance with DIN 32676-A DN50 with a connection diameter of 1.99 in is required for connection of the nozzle at the weld-in flange. A gasket with a thickness of .08 in is required if the flange is used in combination with the PopUp Whirly.



Order no.: 050.020.1Y.01.00
Material: Stainless steel 1.4404 (316L)

Spray angle	Ordering number			Flow Rate (Gallons Per Minute)					Max. tank diameter ft.
	Type	Connection		20 psi	30 psi	Liters per min. 2 bar	40 psi	60 psi	
		G1 1/4A ISO 228	Tri-Clamp						
30°	5P5.081.1Y.00.00.0	AP	00	10.97	13.43	50	15.51	19.00	10

Information on operation

The PopUp Whirly is not suitable for operation with compressed air or another gas. Use above the recommended pressure will have a negative influence on the cleaning result and wear.

*This product is also available in a ATEX version