



High impact tank cleaning machine

Series 5TA

Series 5TA

The hygienic design and high quality of the 5TA are well suited for the pharmaceutical, food and beverage industries. It is extremely effective thanks to the particularly powerful solid jet nozzles and is also suitable for small tanks with difficult soils. The series can resist pressures of up to 217 psi and high temperatures without any problem.



To see video

Scan the QR-code
or go to:
www.lechlerusa.com

	Max. Tank diameter [ft]	0	15	30	45	60
--	--------------------------------	---	----	----	----	----

Materials
AISI 316L SS, AISI 632, PTFE, PEEK, Zirconium oxide, EPDM, 32 RA surface finish is included with every material

Max. temperature
203°F/ 95°C

Recommended operating pressure
75 psi

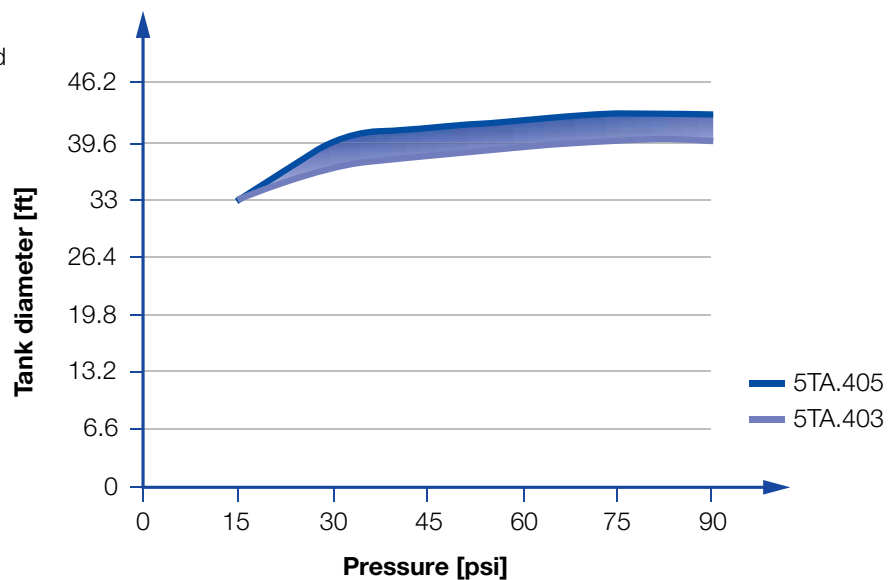
Installation
Operates in every direction

Filtration
Line strainer with a mesh size of 0.2 mm/80 Mesh

Bearing
Ball bearing

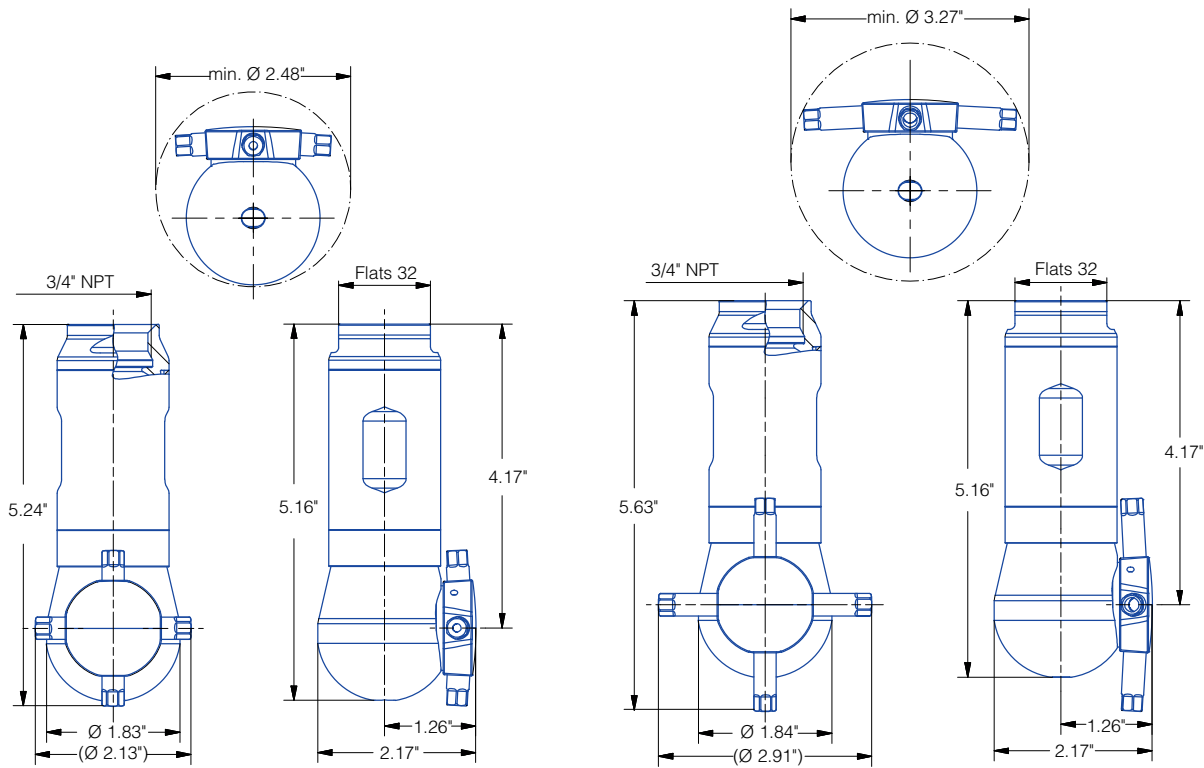
Weight
2 lbs

Rotation monitoring sensor
Sensor compatible
Info: see page 76



Overview of the tank diameter, depending upon the pressure of series 5TA



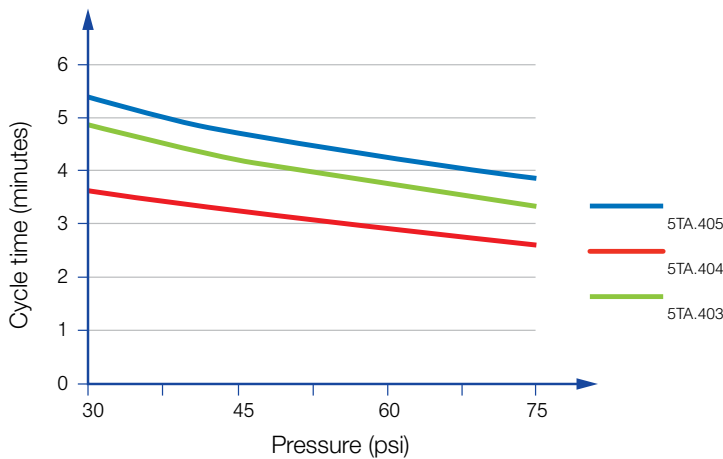


5TA.403.1Y.BL and 5TA.404.1Y.BL

5TA.405.1Y.BL

Spray angle	Ordering no.	Free Passage (in.)	Number, Ø Nozzles [mm]	Flow Rate (Gallons Per Minute)					Max. tank diameter [ft]	
				liters per minute 2 bar	30 psi	40 psi	75 psi	145 psi		Max Pressure (psi)
360°	5TA. 403. 1Y. BL	.059	4 x 3.0	24	6	7	10	14	217	39
	5TA. 404. 1Y. BL	.059	4 x 4.0	35	9	11	15	21	217	41
	5TA. 405. 1Y. BL	.059	4 x 5.0	50	13	16	21	30	217	43

Slip-on connection available on request. The maximum tank diameter shown above applies for the recommended operating pressure and is indicative only. The cleaning result is also affected by the type of soiling.



Cycle time depending on pressure of series 5TA

Example of ordering with ATEX approval. FDA and (EG) 1935/2004 conform.

Unit group / category / zones:
 Ⓜ II 1G Ex h LLB T6... T3 Ga
 Ⓜ II 1D Ex h IIIC T85 °C...T150 °C Da

Example Type/Ordering no. of ordering: 5TA.403.1Y.BL.EX

FDA compliant

 Ex

Example of ordering with FDA and (EG) 1935/2004 conform.

All Materials are suitable for contact with food.

Example Type/Ordering no. of ordering: 5TA.403.1Y.BL

FDA compliant



High impact tank cleaning machine

Series 5TB

Series 5TB

The 5TB has firmly established itself, above all in the pharmaceutical, food and beverage industries because of its hygienic design and high quality. The especially strong solid jets produce an extremely high degree of effectiveness, while the gear-controlled rotation ensures high levels of efficiency. This series is suitable for high pressures and temperatures.



To see video

Scan the QR-code
or go to:
www.lechlerusa.com



Max. Tank diameter [ft]

0 15 30 45 60



Materials

AISI 316L SS, AISI 632, PTFE, PEEK, Zirconium oxide, EPDM, 32 RA surface finish is included with every material



Max. temperature

203°F/ 95°C



Recommended operating pressure

75 psi



Installation

Operates in every direction



Filtration

Line strainer with a mesh size of 0.2 mm/80 Mesh



Bearing

Ball bearing



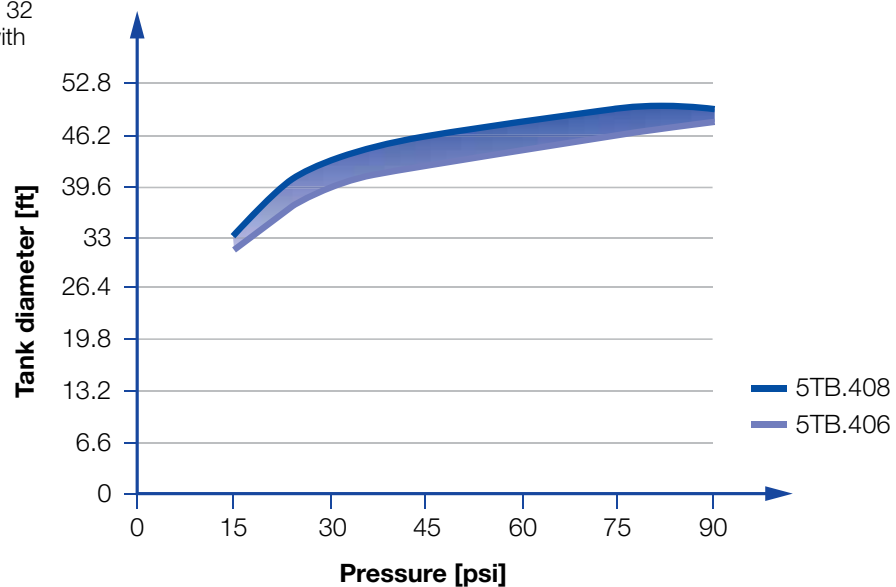
Weight

8.8 lbs



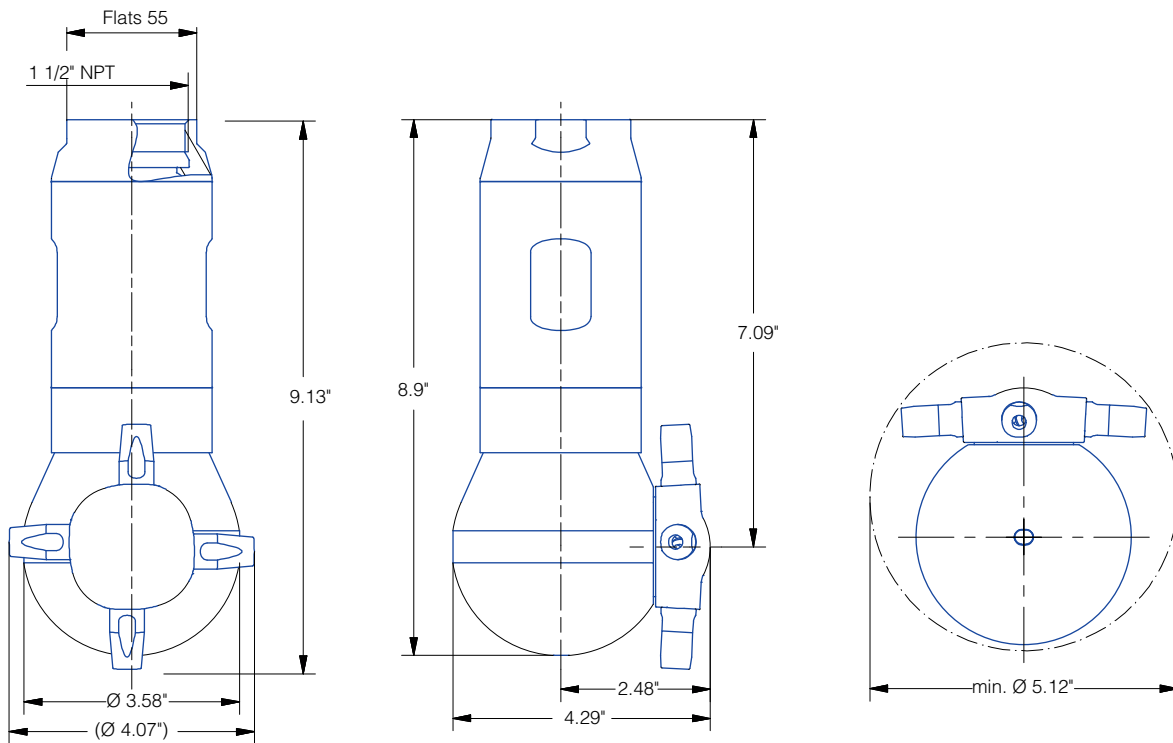
Rotation monitoring sensor

Sensor compatible
Info: see page 66



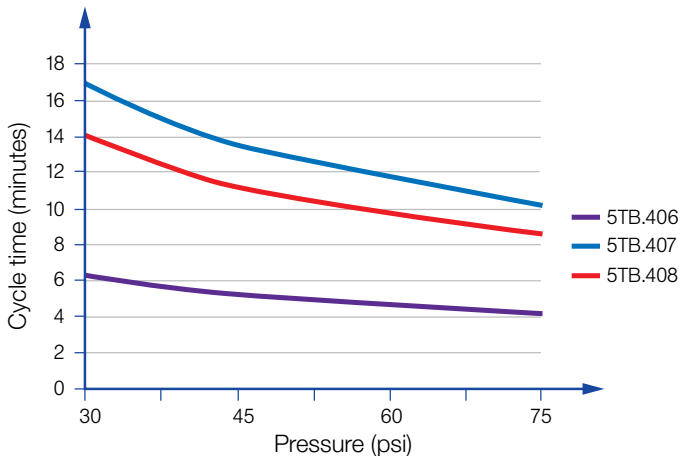
Overview of the tank diameter, depending upon the pressure of series 5TB





Spray angle	Ordering no.	Free Passage (in.)	Number, Ø Nozzles [mm]	Flow Rate (Gallons Per Minute)				Max pressure (psi)	Max. tank diameter [ft]	
				liters per minute 2 bar	30 psi	40 psi	75 psi			145 psi
360°	5TB.406.1Y.BS	.236	4 x 6.0	107	29	33	45	63	362	46
	5TB.407.1Y.BS	.236	4 x 7.0	132	35	41	56	78	362	46
	5TB.408.1Y.BS	.236	4 x 8.0	150	40	47	64	89	362	49

The maximum tank diameter shown above applies for the recommended operating pressure and is indicative only. The cleaning result is also affected by the type of soiling.



Cycle time depending on pressure of series 5TB

Example of ordering with ATEX approval. FDA and (EG) 1935/2004 conform.



Unit group / category / zones:

Ex II 1G Ex h LLB T6... T3 Ga
Ex II 1D Ex h IIIC T85 °C...T150 °C Da

Example Type/Ordering no.
of ordering: 5TA.406.1Y.BS.EX

Example of ordering with FDA and (EG) 1935/2004 conform.



All Materials are suitable for contact with food.

Example Type/Ordering no.
of ordering: 5TB.406.1Y.BL



High impact tank cleaning machine Series 5TM

Series 5TM

The 5TM is used for large tank cleaning applications. It is noted for its robust and proven construction, effective solid jets and gear-controlled rotation. This unit operates on low pressures while still providing excellent cleaning.

* Note: The previous M20/M29 series has been replaced with the 5TM series. 5TM components are compatible with all existing M20/M29 tank cleaning machines.



To see video

Scan the QR-code
or go to:
www.lechlerusa.com



Materials
316L, 304 SS, 302 SS,
PTFE, PEEK

Max. temperature
5TM: 203°F/ 95°C

Recommended operating pressure
75 psi

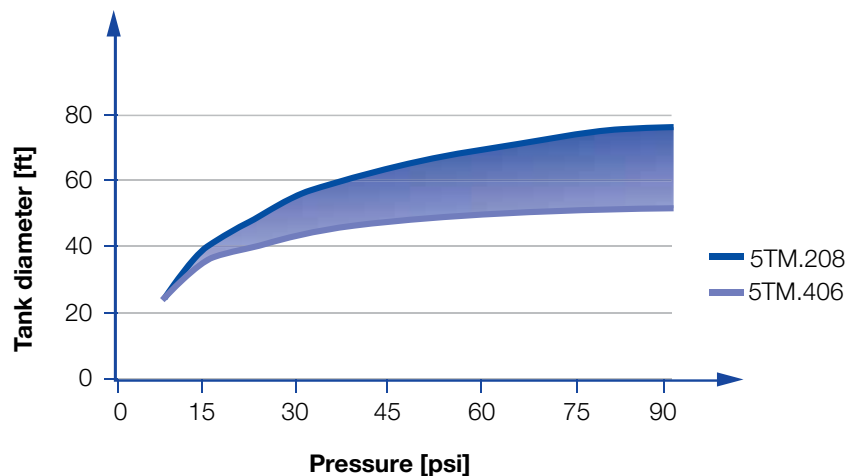
Installation
Operates in every direction

Filtration
Line strainer with a mesh size of 0.2 mm/80 Mesh

Bearing
Ball bearing

Weight
16.5 lbs

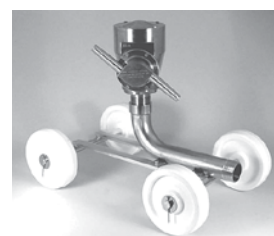
Rotation monitoring sensor
Sensor compatible
Info: see page 72



Overview of the tank diameter, depending upon the pressure of series 5TM



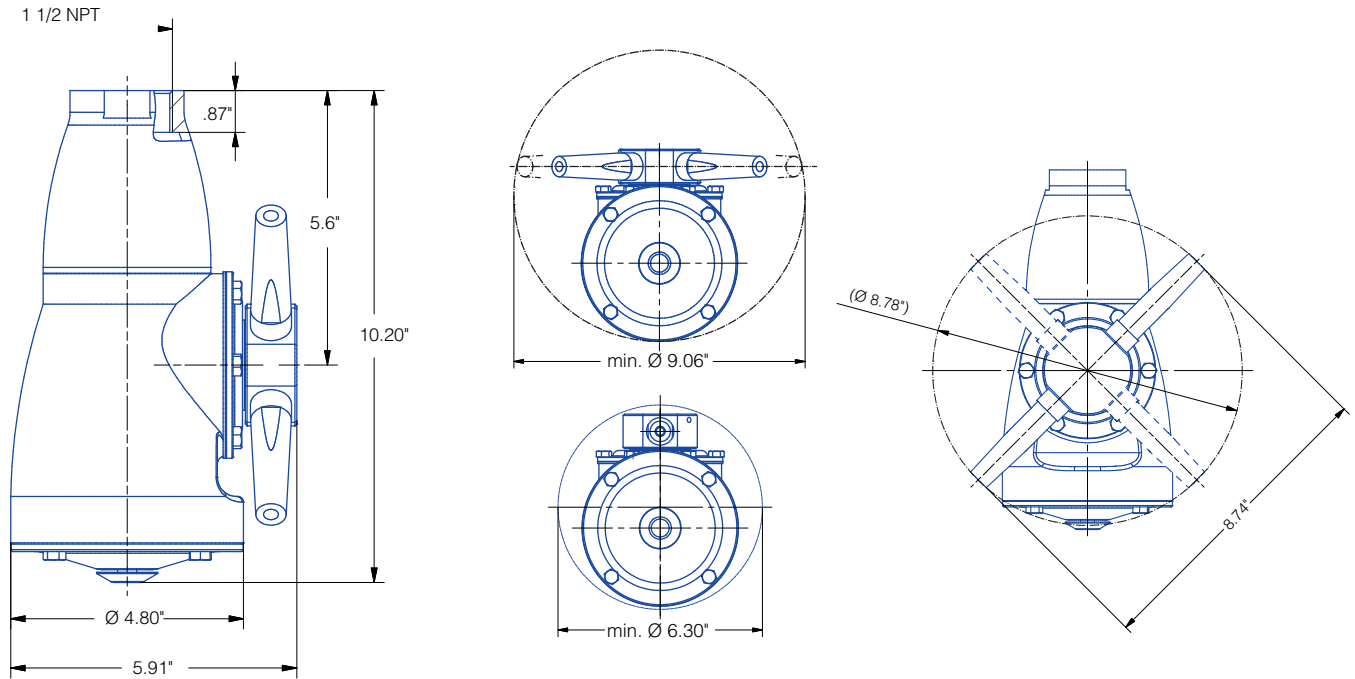
A special mounting attachment allows the 5TM version to double the spray volume to the end bulkheads of long, horizontal tanks or tankers. That part number is 099.164.17.00.



If you have multiple large tanks to clean, Lechler offers a portable cart for easier transporting and operation of your 5TM from tank to tank. The cart part number is M20.000.17.BR.

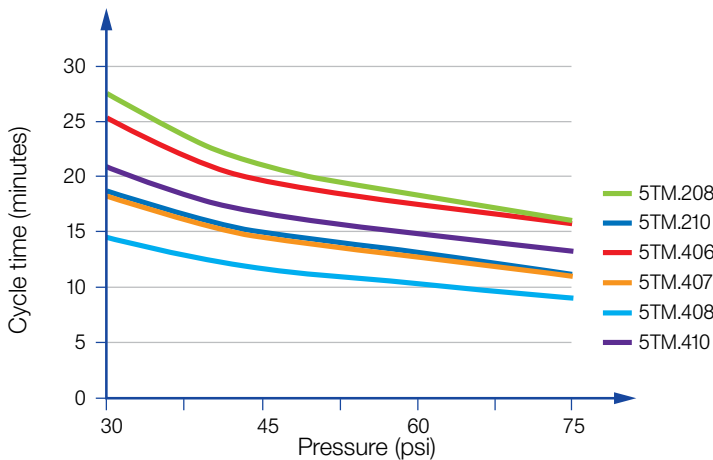
For use with "BR" connection only





Ordering no.				Free Passage (in.)	No. of Nozzles x Diameter	Operating Pressure				Max. tank diameter [ft]
Type	Connection					40 psi	60 psi	80 psi	100 psi	
	1 1/2" Male NPT	1 1/2" Female NPT	1 1/2" CL150 Flange							
5TM. 208. 1Y	BR	BS	015	.314	2 x 8mm	39 gpm	48 gpm	55 gpm	61 gpm	79
5TM. 209. 1Y	BR	BS	015	.354	2 x 9mm	45 gpm	54 gpm	60 gpm	65 gpm	79
5TM. 210. 1Y	BR	BS	015	.394	2 x 10mm	50 gpm	61 gpm	70 gpm	79 gpm	79
5TM. 211. 1Y	BR	BS	015	.433	2 x 11mm	57 gpm	68 gpm	78 gpm	80 gpm	75
5TM. 406. 1Y	BR	BS	015	.236	4 x 6mm	43 gpm	53 gpm	61 gpm	69 gpm	59
5TM. 407. 1Y	BR	BS	015	.276	4 x 7mm	53 gpm	65 gpm	75 gpm	83 gpm	66
5TM. 408. 1Y	BR	BS	015	.315	4 x 8mm	62 gpm	76 gpm	88 gpm	98 gpm	72
5TM. 409. 1Y	BR	BS	015	.354	4 x 9mm	74 gpm	88 gpm	98 gpm	106 gpm	75
5TM. 410. 1Y	BR	BS	015	.394	4 x 10mm	81 gpm	99 gpm	114 gpm	128 gpm	75

The maximum tank diameter shown above applies for the recommended operating pressure and is indicative only. The cleaning result is also affected by the type of soiling.



Cycle time depending on pressure of series 5TM