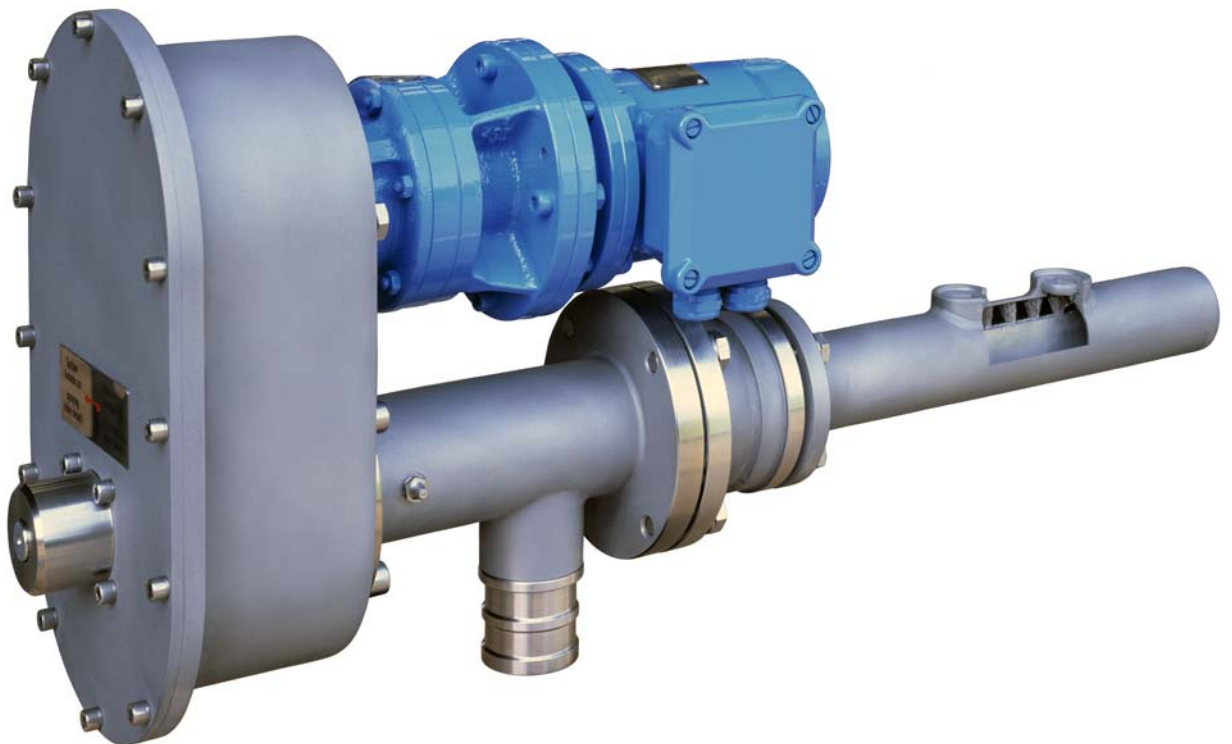
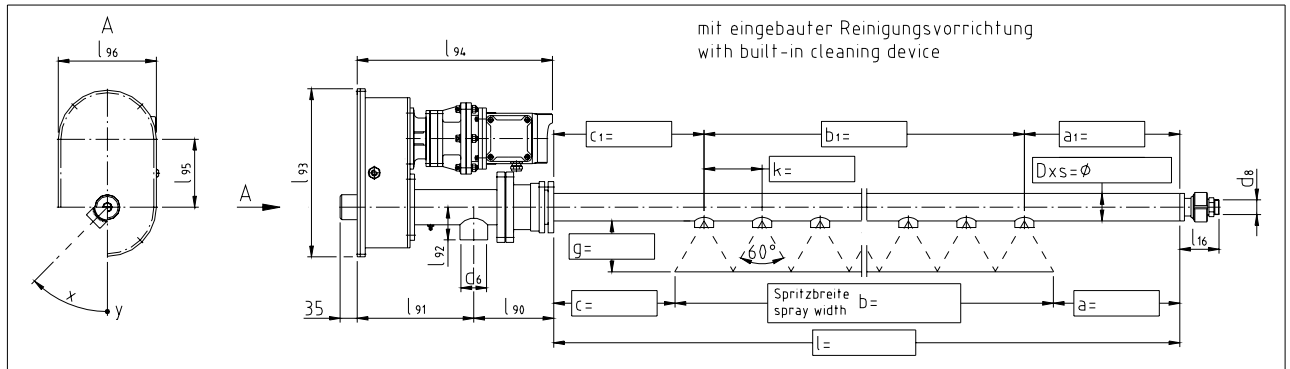




Automatic Cleaning Device for STAMM Nozzle-Spray Showers 10.900



Nozzle cleaning at freely programmable time intervals guarantees an evenly distributed, effective spraying. Nozzle cleaning is thus possible even when the nozzles are difficult to access.



General Details

- Automatic operation of the cleaning device (i.e., turning the brushes while the dirt discharge and operating valve is opened/closed) by means of an electric gear motor, thus regular nozzle cleaning.
- Cleaning cycle ("open valve", "rinse shower", "close valve") at freely programmable time intervals.
- Firm closure of the valve with a defined closing force.
- Existing showers can be retrofitted with this device.

Principle of Operation and Design Details

- The electrical gear motor opens the valve "against the water pressure" and closes it again "with the water pressure".
- Stainless-steel reduction gearbox.
- A spring package ensures adequate closing force even at low water pressures.
- Position detection and control by means of inductive highly protected (IP 67) proximity switches.
- Electronic function control and monitoring system with easily programmable parameters.

Technical Data

- Electrical gear motor
 - Power supply 230/400 V, 50 Hz (others on request)
 - Motor power 0.18 kW
 - Motor protection class IP 67
 - Operation mode S3-15%
 - Output speed 7.4 to 20.5 min⁻¹ (depending on shower size)
- IP 67 proximity switch is easy to exchange.
- Maintenance-free gearbox.
- Valve, cogwheels and wheel housing made of stainless-steel.