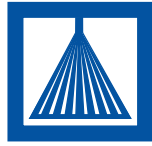
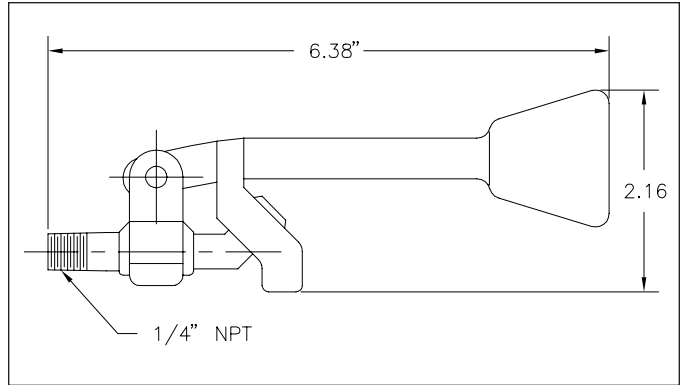
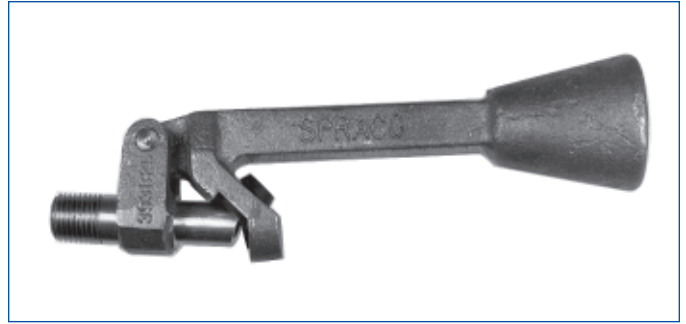
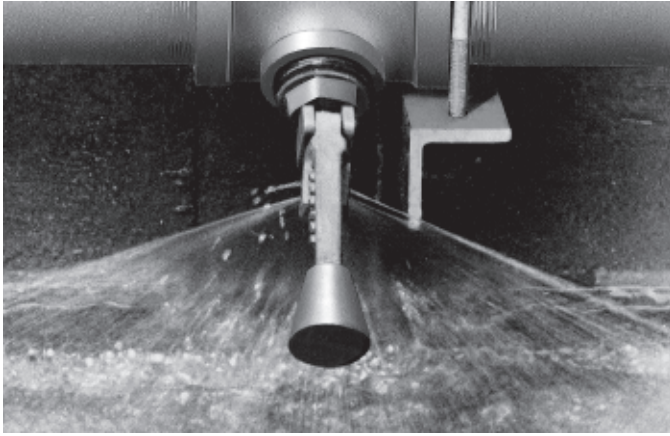


FLAT FAN



**EASY FLUSH™  
FOAM CONTROL NOZZLES**



FLAT FAN

**Easy Flush Foam Control Nozzles**

Designed to control foam within aeration tanks in waste treatment plants, the unique orifice configuration of the Easy-Flush nozzle produces an efficient flat fan spray. Machined from high grade leaded bronze, the Easy Flush nozzle also utilizes a Buna N deflector insert for quick removal upon wear, without complete nozzle replacement.

Easy flush nozzles feature larger free passage than conventional flood type, thereby minimizing clogging and reducing cleaning cycles. They utilize low pressure liquid flow, for reduced pumping costs. In the event of a clog, simply lift

the counterweight to flush the nozzle clean.

Select the Easy Flush nozzle size that provides maximum coverage at the lowest possible pressure and flow rate. Typical installation uses .3 to .4 GPM per foot of coverage, with nozzles mounted on 3 to 5 foot centers.

Nozzle Inlet Conn. (*NPT)	Product Codes for Ordering		Flow Rate (Gallons Per minute)						Spray Width (in) at 12" Elevation @ 5 psi	Stamp	Approx. Weight (lbs.)
	(M) Thread	Spray Angle	3 psi	4 psi	5 psi	6 psi	7 psi	10 psi			
1/4	564.846.32.BC	90°	1.12	1.25	1.4	1.56	1.69	2.0	25	1	1.25
	564.847.32.BC	120°	1.12	1.25	1.4	1.56	1.69	2.0	36	2	1.25
	564.848.32.BC	140°	1.12	1.25	1.4	1.56	1.69	2.0	50	3	1.25
	564.916.32.BC	90°	1.7	1.9	2.1	2.3	2.5	2.9	27	4	1.25
	564.917.32.BC	120°	1.7	1.9	2.1	2.3	2.5	2.9	43	5	1.25
	564.918.32.BC	140°	1.7	1.9	2.1	2.3	2.5	2.9	60	6	1.25
	564.946.32.BC	90°	2.15	2.4	2.62	2.84	3.05	3.55	27	7	1.25
	564.947.32.BC	120°	2.15	2.4	2.62	2.84	3.05	3.55	50	8	1.25
	564.948.32.BC	140°	2.15	2.4	2.62	2.84	3.05	3.55	62	9	1.25

**SPRAY COVERAGE**

Product Codes for Ordering (Male)	Pressure (psig)	Elevation of Nozzle above Water Line — Inches				
		12	18	24	30	36
564.846.32.BC	3	22	30	39	46	54
	4	23	32	42	50	58
	5	25	35	44	53	62
	6	26	36	46	56	65
	7	27	38	48	58	68
564.847.32.BC	3	34	45	56	66	75
	4	35	47	59	69	79
	5	36	49	62	72	82
	6	38	52	65	76	86
	7	40	54	67	79	90
564.848.32.BC	3	41	57	72	85	—
	4	46	62	77	91	—
	5	50	66	82	—	—
	6	53	70	87	—	—
	7	56	74	92	—	—
564.916.32.BC	3	23	31	39	47	56
	4	25	34	42	51	60
	5	27	36	45	54	63
	6	28	37	48	57	67
	7	29	39	50	60	70
564.917.32.BC	3	38	49	60	70	81
	4	41	53	65	75	87
	5	43	57	69	81	93

**SPRAY COVERAGE**

Product Codes for Ordering (Male)	Pressure (psig)	Elevation of Nozzle above Water Line — Inches				
		12	18	24	30	36
564.917.32.BC (cont'd.)	6	46	61	74	87	—
	7	48	64	79	93	—
	10	56	71	86	100	—
564.918.32.BC	3	50	62	74	86	—
	4	55	67	81	—	—
	5	60	73	87	—	—
	6	63	76	90	—	—
	7	65	78	92	—	—
564.946.32.BC	3	24	33	41	50	58
	4	25	35	45	54	63
	5	27	37	48	58	68
	6	28	39	50	60	71
	7	29	40	52	63	73
564.947.32.BC	3	45	60	76	90	—
	4	47	63	79	94	—
	5	50	66	84	98	—
	6	52	69	87	—	—
	7	54	71	90	—	—
564.948.32.BC	3	54	67	80	—	—
	4	58	71	84	—	—
	5	62	75	88	—	—
	6	—	—	—	—	—
	7	—	—	—	—	—



**Ordering Information:**

Type + Material Code + NPT Code = Order No.  
**564. 846 32 BC 564. 846. 32. BC**

**Material Code:**

**32 Bronze**