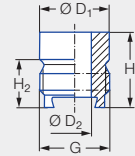


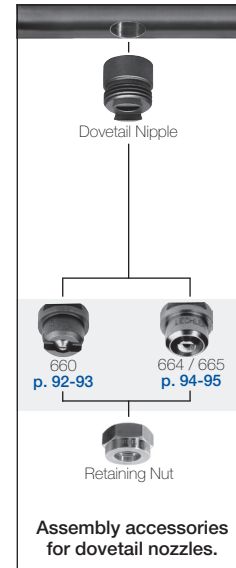
Assembly accessories for dovetail nozzles



Welded nipple with dovetail guide



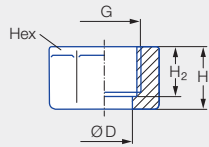
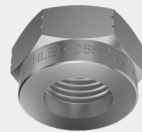
Series	Ordering number		G BSPP	Dimensions [in]				Weight [lb]
	Type	Mat. no.		H ₁	H ₂	Ø D ₁	Ø D ₂	
		17 Stainless steel 316Ti						
660	066.011	●	3/8	0.71	0.45	0.65	0.31	.04
664/665	066.410	●	3/4	1.06	0.61	1.10	0.55	.14



Assembly accessories for dovetail nozzles.

Dovetail nozzles have an automatic alignment guide which requires a matching dovetail base. Once the base is set, the nozzle can be removed and replaced without need to readjust the alignment. Nozzle is secured to the base with a retaining nut.

Retaining nuts



Series	Ordering number				G BSPP	Dimensions [in]				Weight [lb] (Brass)
	Type	Mat. no.				H ₁	H ₂	Ø D	Hex (mm)	
		16 Stainless steel 303	17 ¹ Stainless steel 316Ti	30 Brass						
226/2TR/ 468/652/660/ 684/548/679	065.200	●	●	●	3/8	0.51	0.39	0.50	22	.05
656/657/ 664/665	065.600	●	●	●	3/4	0.63	0.51	0.79	32	.13

¹ We reserve the right to supply material 316Ti or 316L under material no. 17.

Ordering Type + Material no. = Ordering no.
example: 066.011 + 17 = 066.011.17