



# Flat jet slotted nozzle tips for air or saturated steam Series 679

## Series 679

The flat jet nozzle tips of the 679 series are characterized by their wide, powerful air jet. Due to the special nozzle design, the jet angle is approx. 70° – 90°. Mounting with a retaining nut allows for an easy installation and alignment of the nozzles.



**Materials**  
Stainless steel  
AISI 316Ti,  
Brass



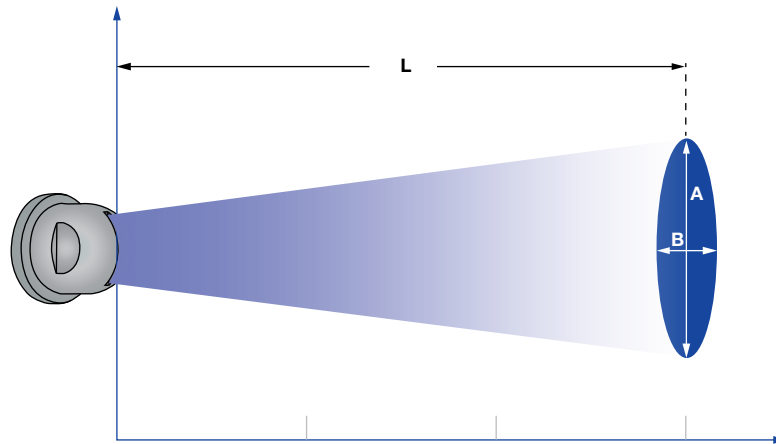
**Noise level**  
67-92 db(A) at 29 psi



**Air consumption**  
see table



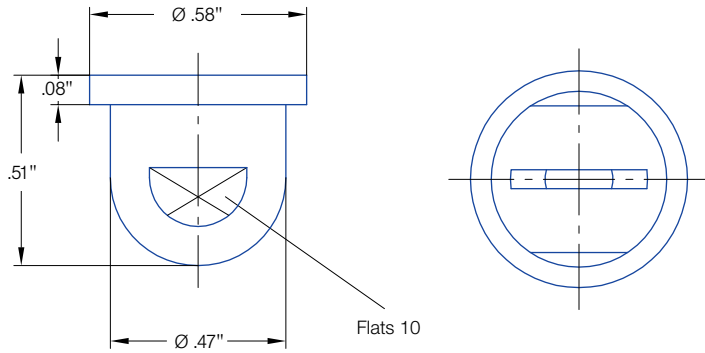
**Pressure**  
 $P_{max} = 145 \text{ psi}$




Jet pattern of 679 nozzle series

Pressure:	14.5 psi	44 psi	72.5 psi	
679.037	Distance L [in]:	1.9	3.9	5.9
	A [in]:	4.3	10.2	15
	B [in]:	1	1.4	1.8
679.117	Distance L [in]:	1.9	4.9	5.9
	A [in]:	3.9	9.8	12.2
	B [in]:	1	1.2	1.4
679.255	Distance L [in]:	14.8	20	20
	A [in]:	3.5	7.5	11
	B [in]:	3.5	3.5	3.5

Pressure:	14.5 psi	44 psi	72.5 psi	
679.415	Distance L [in]:	27	35	35
	A [in]:	6.3	11.8	18.1
	B [in]:	8.5	8.5	8.5
679.495	Distance L [in]:	35	35	35
	A [in]:	7.9	16.1	20.1
	B [in]:	9.1	9.1	9.1



Spray angle 	Ordering no.		Equiv. Orifice diameter [in]	Capacity for Air [Standard Cubic Feet per Minute]				Capacity for Saturated Steam [lb/hr]				
	Type	Mat. no.		7 psi	29 psi	73 psi	145 psi	7 psi	29 psi	73 psi	145 psi	
		17 AISI 316Ti										30 Brass
approx. 70°–90°	679. 037	-	○	.047	.9	1.8	3.5	6.5	2.6	5.1	10.1	18.3
	679. 085	○	○	.051	1.2	2.4	4.7	8.7	3.5	6.8	13.4	24.4
	679. 117	○	○	.059	1.2	2.5	4.9	9.1	3.8	7.3	14.3	25.8
	679. 165	○	○	.071	1.5	3.0	6.1	11.1	4.4	9.0	17.6	31.5
	679. 255	○	○	.083	2.1	4.3	8.5	15.7	6.2	12.6	24.7	44.5
	679. 365	○	○	.110	3.7	7.5	15.0	27.4	11.0	22.0	43.1	77.7
	679. 415	○	○	.142	6.0	12.0	24.0	43.9	17.6	35.1	69.1	124.8
	679. 495	○	○	.169	9.2	18.3	36.6	67.1	27.3	54.6	106.8	192.6

**Example of ordering:** Type 679. 037. + Mat. no. 30 = Ordering no. 679. 037. 30. 00