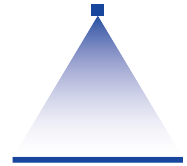


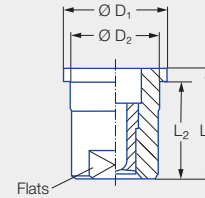
High pressure flat fan nozzles

Series 652



Features:

- Sharp, uniform flat fan spray
- Extremely narrow spray depth
- Assembly with retaining nut
- Housing: Stainless steel 303,
Insert: Hardened stainless steel 420F



Applications:

- High pressure cleaning

Series 652

G	Dimensions [in]					Weight [lb]	p _{max} ¹ [psi]
	L ₁	L ₂	Ø D ₁	Ø D ₂	Flats (mm)		
Assembly with retaining nut 3/8 BSPP	0.63	0.55	0.58	0.50	10	0.03	approx. 4,351

¹ Applies only to operation at constant pressure.

International Code US gal/min. at 40 psi	Ordering number							Equivalent bore diameter A [in]	V̇ water [gal/min]								
	Series	Flow rate code				Mat. No. A3 Stainless steel 303/420F	Connection For retaining nut		p [psi]								
		Spray angle							liters per minute	40	600	80 bar	1000	1500	2000	3000	4500
		20°	30°	45°	60°												
02	652	361	362	363	364	●	29	0.039	0.20	0.77	4.08	1.00	1.22	1.41	1.73	2.12	
021	652	371	372	373	374	●	29	0.040	0.21	0.81	4.28	1.05	1.29	1.49	1.82	2.23	
025	652	381	382	383	384	●	29	0.043	0.25	0.97	5.10	1.25	1.53	1.77	2.16	2.65	
028	652	391	392	393	394	●	29	0.045	0.28	1.09	5.71	1.40	1.72	1.98	2.43	2.97	
03	652	401	402	403	404	●	29	0.046	0.30	1.16	6.11	1.50	1.84	2.12	2.60	3.18	
034	652	411	412	413	414	●	29	0.051	0.34	1.32	6.93	1.70	2.08	2.40	2.94	3.61	
038	652	441	442	443	444	●	29	0.052	0.38	1.47	7.75	1.90	2.33	2.69	3.29	4.03	
04	652	451	452	453	454	●	29	0.053	0.40	1.55	8.16	2.00	2.45	2.83	3.47	4.25	
043	652	461	462	463	464	●	29	0.054	0.43	1.67	8.77	2.15	2.63	3.04	3.72	4.56	
045	652	471	472	473	474	●	29	0.055	0.45	1.74	9.18	2.25	2.76	3.18	3.90	4.77	
05	652	481	482	483	484	●	29	0.061	0.50	1.94	10.20	2.50	3.06	3.54	4.33	5.30	
055	652	501	502	503	504	●	29	0.063	0.55	2.13	11.22	2.75	3.37	3.89	4.76	5.83	
06	652	521	522	523	524	●	29	0.068	0.60	2.32	12.24	3.00	3.67	4.24	5.20	6.36	
065	652	531	532	533	534	●	29	0.069	0.65	2.52	13.26	3.25	3.98	4.60	5.63	6.89	
07	652	541	542	543	544	●	29	0.071	0.70	2.71	14.28	3.50	4.29	4.95	6.06	7.42	
075	652	551	552	553	554	●	29	0.075	0.75	2.90	15.29	3.75	4.59	5.30	6.49	7.95	
08	652	571	572	573	574	●	29	0.080	0.80	3.10	16.31	4.00	4.90	5.66	6.93	8.49	
087	652	581	582	583	584	●	29	0.081	0.87	3.37	17.74	4.35	5.33	6.15	7.53	9.23	
09	652	591	592	593	594	●	29	0.083	0.90	3.49	18.35	4.50	5.51	6.37	7.80	9.55	
10	652	601	602	603	604	●	29	0.091	1.00	3.87	20.38	5.00	6.12	7.07	8.66	10.60	
11	652	621	622	623	624	●	29	0.094	1.10	4.26	22.42	5.50	6.74	7.78	9.53	11.67	
125	652	641	642	643	644	●	29	0.098	1.25	4.84	25.48	6.25	7.65	8.84	10.83	13.26	
131	652	651	652	653	654	●	29	0.100	1.31	5.07	26.71	6.55	8.02	9.27	11.35	13.90	
139	652	661	662	663	664	●	29	0.104	1.39	5.38	28.34	6.95	8.51	9.83	12.04	14.74	
15	652	671	672	673	674	●	29	0.106	1.50	5.81	30.58	7.50	9.18	10.60	12.99	15.91	
175	652	701	702	703	704	●	29	0.118	1.75	6.78	35.68	8.75	10.72	12.38	15.16	18.56	
20	652			723	724	●	29	0.120	2.00	7.75	40.78	10.00	12.25	14.14	17.32	21.21	
25	652			763	764	●	29	0.138	2.50	9.68	50.97	12.50	15.31	17.68	21.65	26.52	
30	652			793		●	29	0.153	3.00	11.62	61.16	15.00	18.37	21.21	25.98	31.82	

Conversion formula for this series: $\dot{V}_2 = \dot{V}_1 \cdot \sqrt{\frac{p_2}{p_1}}$



Assembly accessories can be found in Chapter 12 "Accessories".

Ordering example: 652 + 361 + A3 + 29 = Ordering no. = 652.361.A3.29