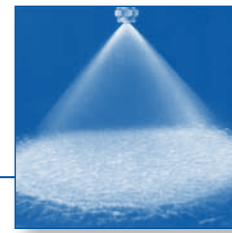




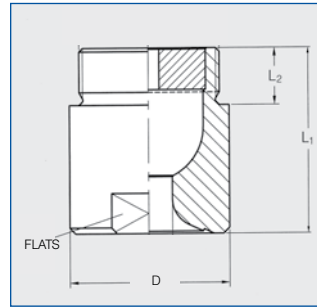
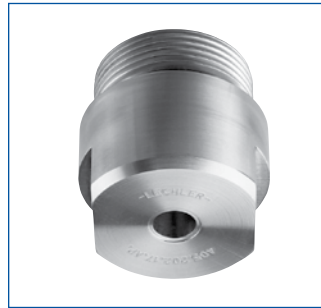
Full cone nozzles Axial-flow Series 405



**Uniform spray pattern.
Large free passage cross-
sections due to optimized
x-style swirl insert.**

Applications:

- Surface spraying
- Spraying over packings
- Cleaning and washing processes
- Chemical process engineering
- Cooling of gaseous fluids and solids
- Water treatment



Dimensions (in.)				
Inlet (Male NPT)	L1	L2	D	Flats
1-1/4	1.97	.75	1.93	1-5/8
1-1/2	2.36	.75	2.32	2
2	3.07	.94	2.68	2-3/8

Spray angle	Ordering no.			Orifice diam. (in.)	Free passage (in.)	Flow Rate (Gallons Per Minute)								Spray Diam. D (in.) @ 30 psi		
	Type	Material no.	Connection			liters per minute			psi			H=20"	H=40"			
			Male NPT			5	10	20	2	30	40			60		
		316L SS 1Y	1 1/4"	1 1/2"	2"	psi	psi	psi	bar	psi	psi	psi				
90°	405. 206	○	BP	-	-	.473	.197	13	17	23	100	27	30	35	31	57
	405. 286	○	-	BR	-	.599	.244	21	28	36	160	43	48	57	31	61
	405. 326	○	-	-	BV	.678	.303	26	35	46	200	54	60	71	33	63
	405. 366	○	-	-	BV	.768	.343	33	43	57	250	67	75	88	33	63
	405. 406	○	-	-	BV	.867	.374	41	54	72	315	85	95	111	33	63
120°	405. 208	○	BP	-	-	.500	.197	13	17	23	100	27	30	35	57	102
	405. 288	○	-	BR	-	.630	.260	21	28	36	160	43	48	57	59	106
	405. 328	○	-	-	BV	.701	.311	26	35	46	200	54	60	71	59	110
	405. 368	○	-	-	BV	.792	.347	33	43	57	250	67	75	88	59	110
	405. 408	○	-	-	BV	.883	.359	41	54	72	315	85	95	111	59	110

Example Type + Material no. + Conn. = Ordering no.
for ordering: 405. 204 + 1Y + BP = 405. 204. 1Y. BP

Full cone