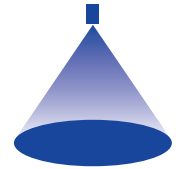


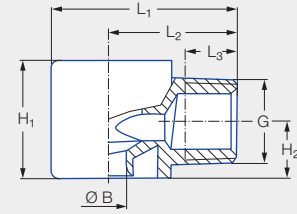
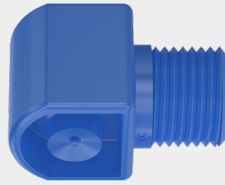
➤ Tangential-flow full cone nozzles, plastic version

Series 422/423



Features:

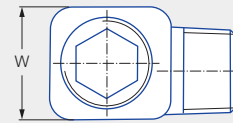
- Tangentially arranged supply of liquid
- Without swirl inserts
- Non-clogging
- Stable spray angle
- Uniform liquid distribution
- High chemical resistance




Applications:

- Surface spraying
- Cooling
- Cleaning and washing processes
- Foam control

Series 422/423

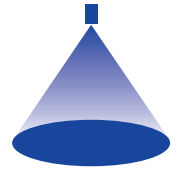


Connection	G	Dimensions [in]						Weight [lb]
		H ₁	H ₂	L ₁	L ₂	L ₃	Hex (mm)	
BC	1/4 NPT	0.63	0.31	1.10	0.79	0.39	16	0.02
BE	3/8 NPT	0.91	0.44	1.42	0.98	0.40	22	0.04
BG	1/2 NPT	1.50	0.76	1.95	1.32	0.52	32	0.09
CG	1/2 BSPT	1.50	0.76	1.95	1.32	0.52	32	0.09
CK	3/4 BSPT	1.97	0.96	2.30	1.52	0.73	41	0.11

Spray angle	Ordering number					Bore diameter B [in]	Narrowest free cross sections Ø [in]	V̇ water [gal/min]							Spray diameter D [in] (at p = 30 psi)		
	Type	Mat. no.	Connection					p [psi]									
		5E	PVDF	1/4 NPT	3/8 NPT			1/2 BSPT	3/4 BSPT	7	15	30	Liters per min. 2 bar	45			75
60°	422.724	●		BE			0.142	0.142	0.82	1.20	1.69	6.30	2.07	2.68	3.72	10	20
90°	422.406	●	BC				0.059	0.057	0.13	0.19	0.27	1.00	0.33	0.42	0.59	20	35
	422.566	●	BC				0.091	0.087	0.32	0.47	0.67	2.50	0.82	1.06	1.48	20	36
	422.606	●		BE			0.102	0.098	0.41	0.60	0.85	3.15	1.04	1.34	1.86	20	36
	422.646	●		BE			0.118	0.114	0.52	0.76	1.07	4.00	1.32	1.70	2.36	20	36
	422.726	●		BE			0.146	0.142	0.82	1.20	1.69	6.30	2.07	2.68	3.72	20	38
	422.806	●		BE			0.183	0.181	1.30	1.90	2.69	10.00	3.29	4.25	5.90	20	38
	422.846	●		BE			0.209	0.209	1.62	2.37	3.36	12.50	4.11	5.31	7.38	20	38
	422.886	●		BE			0.228	0.228	2.08	3.04	4.30	16.00	5.26	6.80	9.45	20	40
	422.926	●			*BG		0.287	0.287	2.60	3.80	5.37	20.00	6.58	8.50	11.81	20	40
	422.966	●			CG		0.315	0.315	3.24	4.75	6.72	25.00	8.23	10.62	14.77	20	40
	423.006	●			CG		0.343	0.343	4.09	5.98	8.46	31.50	10.36	13.38	18.60	20	40
423.126	●				CK	0.472	0.472	8.18	11.97	16.93	63.00	20.73	26.76	37.21	20	40	

*only available in NPT





Spray angle	Ordering number						Bore diameter B [in]	Narrowest free cross sections Ø [in]	V̇ water [gal/min]							Spray diameter D [in] (at p = 30 psi)	
	Type	Mat. no.	Connection						p [psi]							H = 10 [in]	H = 20 [in]
		5E	1/4 NPT	3/8 NPT	1/2 BSPT	3/4 BSPT			7	15	30	Liters per min. 2 bar	45	75	145		
		PVDF															
120°	422.408	●	BC				0.059	0.057	0.13	0.19	0.33	1.00	0.33	0.42	0.59	26	47
	422.448	●	BC				0.065	0.063	0.16	0.24	0.34	1.25	0.41	0.53	0.74	26	47
	422.488	●	BC				0.075	0.075	0.21	0.30	0.43	1.60	0.53	0.68	0.95	26	47
	422.568	●	BC				0.094	0.094	0.32	0.47	0.67	2.50	0.82	1.06	1.48	26	47
	422.728	●		BE			0.157	0.154	0.82	1.20	1.69	6.30	2.07	2.68	3.72	30	55
	422.888	●		BE			0.260	0.236	2.08	3.04	4.30	16.00	5.26	6.80	9.45	33	58
	422.968	●			CG		0.315	0.315	3.24	4.75	6.72	25.00	8.23	10.62	14.77	35	63
	423.008	●			CG		0.343	0.343	4.09	5.98	8.46	31.50	10.36	13.38	18.60	35	63
423.128	●				CK	0.500	0.484	8.18	11.97	16.93	63.00	20.73	26.76	37.21	35	63	

Also available in metric thread.

Conversion formula for this series: $\dot{V}_2 = \dot{V}_1 \cdot \sqrt{\frac{p_2}{p_1}}$

Ordering Type + Material no. + Connection = Ordering no.
 example: 422.408 + 5E + BC = 422.408.5E.BC



Assembly accessories can be found in Chapter 12 "Accessories".