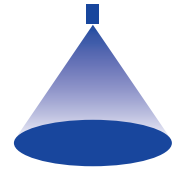


➤ Tangential-flow full cone nozzles, plastic version with bayonet quick-release system Series 422

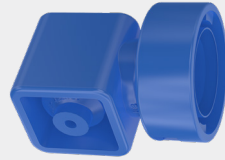


Features:

- Without swirl inserts
- Non-clogging
- Stable spray angle
- Simple and quick assembly
- Uniform liquid distribution
- High chemical resistance

Applications:

- Surface spraying
- Cooling
- Cleaning and washing processes
- Foam control



Series 422

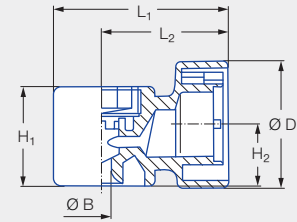
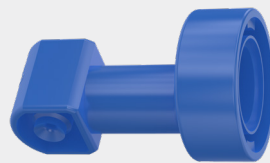


Figure 1

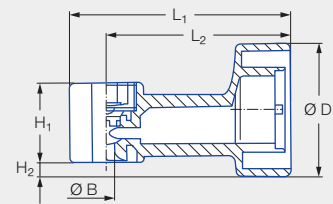


Figure 2

Type	Connection	Figure	Dimensions [in]					Weight [lb] (PVDF)
			H ₁	H ₂	L ₁	L ₂	Ø D	
422.644/422.606/422.608	KB	1	0.91	0.55	1.57	1.14	1.16	0.04
422.406/422.408/422.528	KB	2	0.69	0.14	1.89	1.57	1.16	0.03

Spray angle	Ordering number			Bore diameter B [in]	Narrowest free cross sections Ø [in]	V̇ water [gal/min]							Spray diameter D [in] (at p = 30 psi)		
	Type	Mat. no.				Connection	p [psi]								
		5E	53				7	15	30	liters per minute 2 bar	45	75	145		
60°	422.644		●	KB	0.114	0.114	0.52	0.76	1.07	4.00	1.32	1.70	2.36	10	20
90°	422.406	●		KB	0.059	0.057	0.13	0.19	0.27	1.00	0.33	0.42	0.59	20	35
	422.606	●		KB	0.098	0.098	0.41	0.60	0.85	3.15	1.04	1.34	1.86	20	36
120°	422.408	●		KB	0.059	0.057	0.13	0.19	0.27	1.00	0.33	0.42	0.59	26	47
	422.528	●		KB	0.083	0.079	0.26	0.38	0.54	2.00	0.66	0.85	1.18	26	47
	422.608	●		KB	0.102	0.098	0.41	0.60	0.85	3.15	1.04	1.34	1.86	26	47

Conversion formula for this series: $\dot{V}_2 = \dot{V}_1 \cdot \sqrt{\frac{p_2}{p_1}}$

Ordering Type + Material no. + Connection = Ordering no.
example: 422.644 + 53 + KB = 422.644.53.KB

Assembly accessories can be found in Chapter 12 "Accessories".