

# Flat fan dovetail nozzles

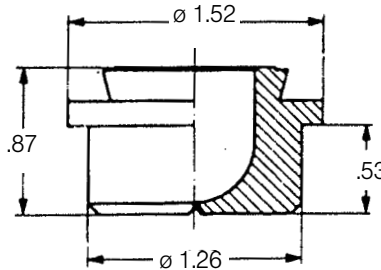
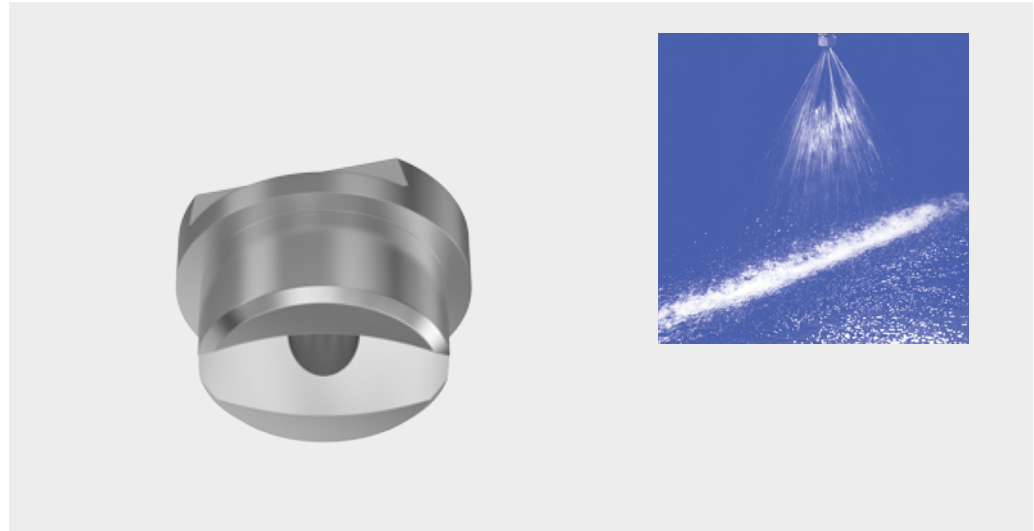
## Series 669

The 669 series nozzles come with the conventional, automatic self aligning dovetail connection which ensures that every nozzle will always be installed under the correct spray offset angle towards the roll center line.

This nozzle family allow very large flow rates for roughing mill, plate mill and strip coling applications.

All tips have an automatically built in 15° offset angle if the welding nipple is welded in line with the center line of the spray header. Any other offset angle has to be compensated for by welding the nipple under a different angle (minus the 15° inbuilt offset angle).

The spray has a parabolic liquid distribution which is ideal for a multi nozzle header arrangement.



Weight brass: .30 lbs

### Accessories

Weight: .14 lbs  
 Welding **066.910.17** (316 SS)  
 Nipple: **066.910.02** (1.0159)

Weight brass .13 lbs  
 Retaining nut: **066.900.16** (303 SS)  
**066.900.17** (316 SS)  
**066.900.30** (brass)

Ordering no.				Material no.		Equivalent Orifice diam. (in.)	Flow Rate (Gallons Per Minute)						
Type				16	30		10 psi	20 psi	liters per minute	40 psi	60 psi	80 psi	100 psi
Spray Angle							10 psi	20 psi	2 bar	40 psi	60 psi	80 psi	100 psi
20°	30°	45°	60°										
669.041	669.042	669.043	669.044	○	○	.22-.26	6.21	8.78	40	12.41	15.20	17.55	19.62
669.121	669.122	669.123	669.124	○	○	.29-.33	9.77	13.82	63	19.55	23.94	27.65	30.91
669.201	669.202	669.203	669.204	○	○	.37-.42	15.51	21.94	100	31.03	38.00	43.88	49.06
669.281	669.282	669.683	669.284	○	○	.37-.51	24.82	35.11	160	49.65	60.80	70.21	78.50

Subject to technical modifications

**Example** Type + Material no. = Ordering no.  
 for ordering: 669.041 + 16 = 669.041.16

Technical data and ordering data for accessories see page 18.

Spray width [B] at p=40 psi	H	
	10 in	20 in
669.041 - 664.281	5	8
669.042 - 669.282	6	12
669.043 - 669.283	10	19
665.042 - 665.202	13	25

