

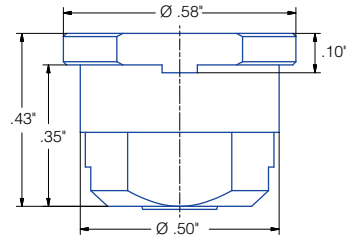
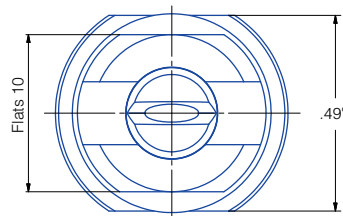
Flat fan nozzle with double-flat alignment Series 6M2


Series 6M2

Assembly with retaining nut. Self aligning jet with double-flat design secures correct spray position for optimal strand surface quality and easy maintenance. Standard version with parabolic liquid distribution.

Applications:


Multi-nozzle arrangements for strand cooling in foot roller area of slab casters where space is limited. Multi-nozzle arrangements in segments for water only secondary cooling in stainless steel slab casters with low water flow rates.



Spray angle 	Ordering no.				Equivalent Orifice diam. (in.)	Free passage (in.)	Flow Rate (Gallons Per Minute)						
	Type	Mat. no.					73 psi	14.5 psi	29 psi	40 psi	43.5 psi	72.5 psi	145 psi
		AISI 303 16	AISI 316Ti 17 ¹	AISI 316L 30									
45°	6M2. 403	○	○	○	.05	.35	.13	.19	.26	.31	.32	.42	.59
	6M2. 483	○	○	○	.06	.04	.21	.30	.42	.5	.52	.67	.95
	6M2. 563	○	○	○	.08	.06	.33	.47	.66	.78	.81	1.04	1.48
	6M2. 643	○	○	○	.10	.07	.53	0.75	1.06	1.24	1.29	1.67	2.36
	6M2. 723	○	○	○	.12	.09	.83	1.18	1.66	1.95	2.04	2.63	3.72
	6M2. 763	○	○	○	.14	.10	1.06	1.50	2.11	2.48	2.59	3.34	4.73
	6M2. 803	○	○	○	.16	.12	1.32	1.87	2.64	3.1	3.24	4.18	5.91

¹We reserve the right to deliver AISI 316Ti or AISI 316L under the material no. 17.

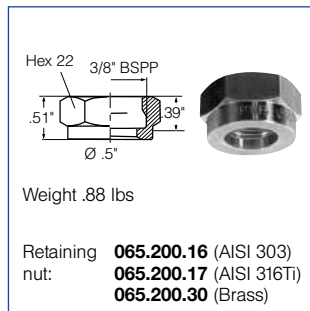
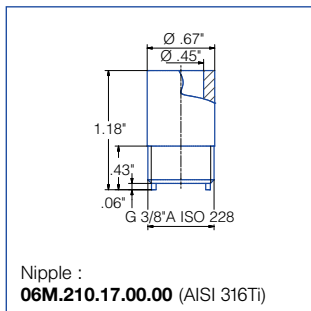
Continued on next page.

Spray angle 	Ordering no.				Equivalent Orifice diam. (in.)	Free passage (in.)	Flow Rate (Gallons Per Minute)						
	Type	Mat. no.					7.3 psi	14.5 psi	29 psi	40 psi	43.5 psi	72.5 psi	145 psi
		AISI 303 16	AISI 316Ti 17 ¹	AISI 316L 30									
60°	6M2. 404	○	○	○	.05	.03	.13	.19	.26	.31	.32	.42	.59
	6M2. 444	○	○	○	.05	.04	.16	.23	.33	.39	.40	.52	.74
	6M2. 484	○	○	○	.06	.04	.21	.30	.42	.5	.52	.67	.95
	6M2. 514	○	○	○	.06	.04	.25	.35	.50	.59	.62	.79	1.12
	6M2. 564	○	○	○	.08	.05	.33	.47	.66	.78	.81	1.04	1.48
	6M2. 604	○	○	○	.09	.06	.42	.59	.83	.98	1.02	1.32	1.86
	6M2. 644	○	○	○	.10	.06	.53	.75	1.06	1.24	1.29	1.67	2.36
	6M2. 674	○	○	○	.11	.07	.63	.89	1.25	1.47	1.54	1.98	2.81
	6M2. 724	○	○	○	.12	.08	.83	1.18	1.66	1.95	2.04	2.63	3.72
	6M2. 764	○	○	○	.14	.09	1.06	1.50	2.11	2.48	2.59	3.34	4.73
	6M2. 804	○	○	○	.16	.10	1.32	1.87	2.64	3.1	3.24	4.18	5.91
6M2. 844	○	-	-	.18	.12	1.65	2.34	3.30	3.88	4.04	5.22	7.38	
6M2. 884	○	-	○	.20	.13	2.11	2.99	4.23	4.96	5.18	6.68	9.45	
90°	6M2. 446	○	○	○	.05	.03	.16	.23	.33	0.39	.40	.52	.74
	6M2. 486	○	○	○	.06	.03	.21	.30	.42	0.5	.52	.67	.95
	6M2. 516	○	○	○	.06	.04	.25	.35	.50	0.59	.62	.79	1.12
	6M2. 566	○	○	○	.08	.04	.33	.47	.66	0.78	.81	1.04	1.48
	6M2. 606	○	○	○	.09	.05	.42	.59	.83	0.98	1.02	1.32	1.86
	6M2. 646	○	○	○	.10	.05	.53	.75	1.06	1.24	1.29	1.67	2.36
	6M2. 676	○	○	○	.11	.06	.63	.89	1.25	1.47	1.54	1.98	2.81
	6M2. 726	○	○	○	.12	.07	.83	1.18	1.66	1.95	2.04	2.63	3.72
	6M2. 766	○	○	○	.14	.07	1.06	1.50	2.11	2.48	2.59	3.34	4.73
	6M2. 806	○	○	○	.16	.09	1.32	1.87	2.64	3.1	3.24	4.18	5.91
	6M2. 846	-	-	○	.18	.09	1.65	2.34	3.30	3.88	4.04	5.22	7.38
6M2. 886	○	-	○	.20	.12	2.11	2.99	4.23	4.96	5.18	6.68	9.45	
120°	6M2. 517	○	○	○	.06	.04	.25	.35	.50	.59	.62	.79	1.12
	6M2. 567	○	○	○	.08	.04	.33	.47	.66	.78	.81	1.04	1.48
	6M2. 607	○	○	○	.09	.04	.42	.59	.83	.98	1.02	1.32	1.86
	6M2. 647	○	○	○	.10	.05	.53	.75	1.06	1.24	1.29	1.67	2.36
	6M2. 677	○	○	○	.11	.06	.63	.89	1.25	1.47	1.54	1.98	2.81
	6M2. 727	○	○	○	.12	.06	.83	1.18	1.66	1.95	2.04	2.63	3.72
	6M2. 767	○	○	○	.14	.07	1.06	1.50	2.11	2.48	2.59	3.34	4.73
	6M2. 807	○	-	○	.16	.08	1.32	1.87	2.64	3.1	3.24	4.18	5.91
	6M2. 847	-	-	-	.18	.09	1.65	2.34	3.30	3.88	4.04	5.22	7.38
	6M2. 887	-	-	-	.20	.10	2.11	2.99	4.23	4.96	5.18	6.68	9.45

¹We reserve the right to deliver AISI 316Ti or AISI 316L under the material no. 17.

Example of ordering: Type **6M2. 404** + Material no. **16** = Ordering no. **6M2. 404. 16**

Accessories



Conversion formula for the above series: $V_2 = V_1 \sqrt{\frac{P_2}{P_1}}$