



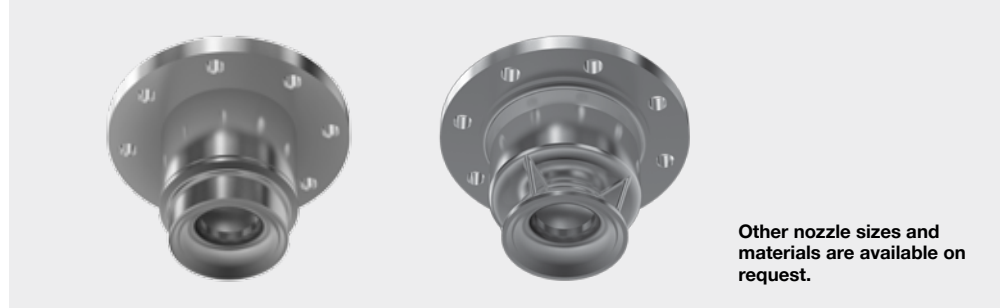
Axial-flow full cone nozzles Series 421



**Even full cone distribution,
high flow rates.**

Applications:

Scrubber, for even surface irrigation, cooling and cleaning of gases, water recooling, column irrigation and for improving chemical reactions via surface enlargement.



Other nozzle sizes and materials are available on request.

Spray angle*	Ordering no.				B Ø [in]	E Ø [in]	Flow Rate (Gallons Per Minute)					
	Type	Mat. no.					4 psi	7 psi	14.5 psi	Liters per minute		
		05.84 GG	1Y.84 316L SS	53.00 PP						2 bar	72 psi	145 psi
60°	421.564	○	-	○	1.46	0.47	99	121	160	800	305	402
	421.604	○	-	○	1.54	0.55	124	152	200	1000	381	503
	421.624	○	○	○	1.61	0.51	155	190	250	1250	476	629
	421.644	○	○	○	1.93	0.63	198	243	320	1600	610	805
	421.664	○	○	○	2.20	0.63	247	304	400	2000	762	1006
	421.684	○	○	○	2.28	0.83	309	379	501	2500	953	1257
	421.704	○	○	○	2.56	0.94	390	478	631	3150	1201	1584
	421.724	-	○	○	2.83	1.18	495	607	801	4000	1525	2012
	421.744	-	○	○	3.19	1.34	618	759	1001	5000	1906	2514
	421.764	-	○	○	3.46	1.38	779	956	1261	6300	2401	3168
	421.784	-	○	○	3.90	1.54	990	1214	1602	8000	3049	4023
	421.804	-	○	-	4.41	1.65	1237	1517	2002	10000	3811	5029
	421.824	-	○	-	4.92	2.05	1546	1896	2503	12500	4764	6286
90°	421.566	○	-	○	1.46	0.59	99	121	160	800	305	402
	421.606	○	-	○	1.54	0.59	124	152	200	1000	381	503
	421.626	○	○	○	1.69	0.75	155	190	250	1250	476	629
	421.646	○	○	○	2.09	0.87	198	243	320	1600	610	805
	421.666	○	○	○	2.20	0.94	247	304	400	2000	762	1006
	421.686	○	○	○	2.32	1.10	309	379	501	2500	953	1257
	421.706	○	○	○	2.60	1.26	390	4790	631	3150	1201	1584
	421.726	-	○	○	2.83	1.38	495	607	801	4000	1525	2012
	421.746	-	○	○	3.19	1.57	618	759	1001	5000	1906	2514
	421.766	-	○	○	3.66	1.54	779	956	1261	6300	2401	3168
	421.786	-	○	○	3.90	1.73	990	1214	1602	8000	3049	4023
	421.806	-	○	○	4.84	2.09	1237	1517	2002	10000	3811	5029
	421.826	-	○	-	4.92	2.13	1543	1896	2502	12500	4764	6286
120°	421.568	○	○	○	1.42	0.59	99	121	160	800	305	402
	421.608	○	○	○	1.61	0.59	124	152	200	1000	381	503
	421.628	○	○	○	1.69	0.75	155	190	250	1250	476	629
	421.648	○	○	○	2.09	0.87	198	243	320	1600	610	805
	421.668	○	○	○	2.17	0.94	247	303	400	2000	762	1006
	421.688	○	○	○	2.32	1.10	309	379	501	2500	953	1257
	421.708	○	○	○	2.60	1.26	390	478	631	3150	1201	1584
	421.728	-	○	○	2.83	1.38	495	607	801	4000	1525	2012
	421.748	-	○	○	3.19	1.57	618	759	1001	5000	1906	2514
	421.768	-	○	○	3.46	1.54	779	956	1261	6300	2401	3168
	421.788	-	○	○	3.90	1.73	990	1214	1602	8000	3049	4023
	421.808	-	○	○	4.25	2.09	1237	1517	2002	10000	3811	5029
	421.828	-	○	○	4.76	2.13	1546	1896	253	12500	4764	6286

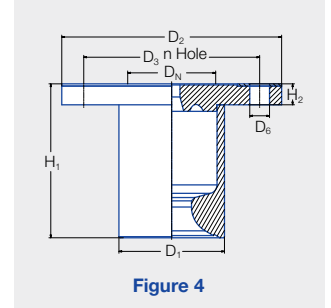
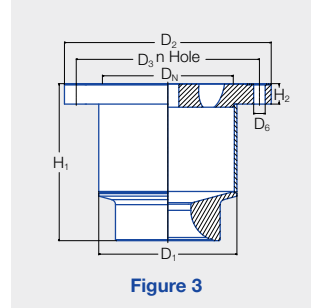
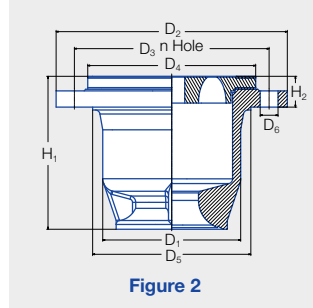
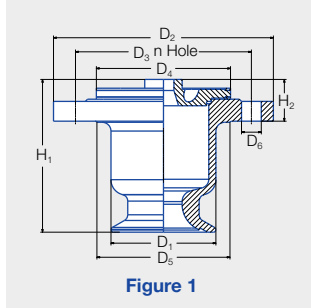
B = bore diameter · E = narrowest free cross section


* Spray angle at p = 2 bar

Other materials available on request



Axial-flow full cone nozzles Series 421



Spray angle 	Type	Mat. no.	Fig.	Dimensions [mm]								Flange hole	
				H ₁	H ₂	D ₁	D ₂	D ₃	D ₄	D ₅	D _N	Number	D ₆
60°-90° 120° 120° 60°-120°	421.56x/ 421.60x	05.84	1	5.28	1.54	3.78	7.87	6.30	4.80	4.76	3.15	8	18
		05.84	1	5.51	1.54	3.78	7.87	6.30	4.80	4.76	3.15	8	18
		1Y.84	3	5.51	.75	3.78	7.87	6.30	-	-	3.15	8	18
		53.00	4	5.16	1.73	3.90	7.87	6.30	-	-	3.15	8	18
60°-120°	421.62x	05.84	1	6.14	1.10	4.45	8.66	8.66	6.22	5.55	3.94	8	18
		1Y.84	3	6.14	.79	4.25	8.66	8.66	-	-	3.94	8	18
		53.00	4	6.14	2.09	4.61	8.66	8.66	-	-	3.94	8	18
60°-90° 120° 60°-120° 60°-120°	421.64x/ 421.66x	05.84	2	6.89	4.65	5.51	9.84	8.27	7.40	6.54	4.92	8	18
		05.84	2	6.89	1.14	5.51	9.84	8.27	7.40	6.54	4.92	8	18
		1Y.84	3	6.89	.75	5.31	9.84	8.27	-	-	4.92	8	18
		53.00	4	6.89	2.24	5.55	9.84	8.27	-	-	4.92	8	18
60°-120°	421.68x/ 421.70x	05.84	2	7.32	1.50	6.69	11.22	9.45	8.15	7.68-	5.91	8	22
		1Y.84	3	7.32	1.06	6.30	11.22	9.45	-	-	5.91	8	22
		53.00	4	7.32	2.01	6.73	11.22	9.45	-	-	5.91	8	23
60°-120°	421.72x/ 421.74x	1Y.84	3	9.84	1.30	8.43	13.39	11.61	-	-	7.87	8	22
		53.00	4	9.84	1.97	8.86	13.39	11.61	-	-	7.87	8	23
60°-120°	421.76x/ 421.78x	1Y.84	3	11.81	1.54	10.39	15.55	13.78	-	-	9.84	12	22
		53.00	4	11.81	2.09	11.02	15.55	13.78	-	-	9.84	12	23
60°-120°	421.80x/ 421.82x	1Y.84	3	14.45	1.93	12.40	17.52	15.75	-	-	11.81	12	22
		53.00	4	14.45	2.24	12.91	17.52	15.75	-	14.17	11.81	12	23

Other materials available on request

Example	Type	+	Material no.	=	Ordering no.
for ordering:	421.564	+	05.84	=	421.564.05.84

Conversion formula for the above series: $\dot{V}_2 = \dot{V}_1 * \left(\frac{p_2}{p_1}\right)^{0.4}$
(≤ 145 psi)