

» Solid stream nozzles

Series 599

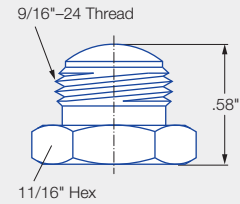
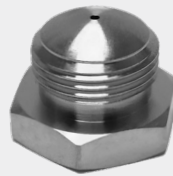
Features:

- For high pressure showers
- Standard material: 316 SS
- Variant 1 for longer service life
- Variant 2 clog resistant

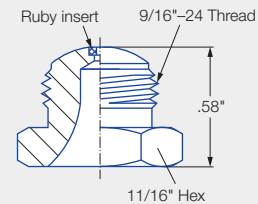
Applications:

- Paper production
- High pressure cleaning

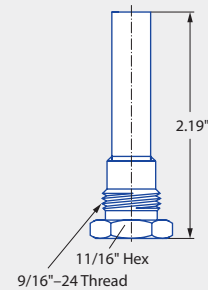
Needle Jet Nozzle Series 599.009.17



Needle Jet Nozzle with Ruby Orifice Series 599.009.8J



Needle Jet Nozzle with Clog Preventer Series 599.028.17



Ordering number			Orifice diameter
Standard Nozzle	Standard with Ruby Orifice***	Clog Resistant****	
599.009.17.00.14	599.009.8J.00.14	599.028.17.00.14	.014" (0.36 mm)
599.009.17.00.28	599.009.8J.00.28	599.028.17.00.28	.028" (0.71 mm)
599.009.17.00.33	599.009.8J.00.33*	599.028.17.00.33	.033" (0.84 mm)
599.009.17.00.40	599.009.8J.00.40	599.028.17.00.40	.040" (1.0 mm)
599.009.17.00.55	599.009.8J.00.55	599.028.17.00.55	.055" (1.40 mm)
599.009.17.00.70	599.009.8J.00.70**	599.028.17.00.70	.070" (1.78 mm)
599.009.17.00.94	599.009.8J.00.94	599.028.17.00.94	.094" (2.39 mm)
599.009.17.01.25	599.009.8J.01.25	599.028.17.01.25	.125" (3.18 mm)

* Actual orifice diameter of this ruby orifice nozzle is .032".

** Actual orifice diameter of this ruby orifice nozzle is .073".

*** With highly resistant ruby orifice for longer service.

**** For showers without self-cleaning features. When spraying down, the extension draws fresh water from the shower above the sediment level.

➤ Solid stream nozzles

Trimming

Series 599

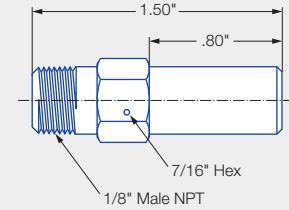
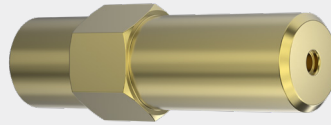
Features:

- Excellent wear resistance due to ruby orifice
- Outstanding precision
- Long operational life

Applications:

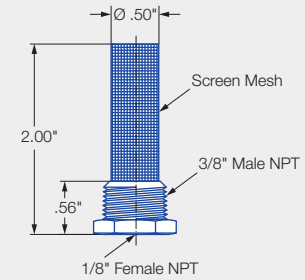
- Paper production
- Trimming
- High pressure cleaning
- Jet cuttings

- Trimming
- Weight: .05 lb.



Screen 099.104.17

- Trimming
- Weight: .05 lb.



Ordering number	Orifice diam. [in.]	V water [gal/min]							
		p [psi]							
		100 psi	200 psi	300 psi	400 psi	500 psi	600 psi	800 psi	1000 psi
599.128.8J.BA.15	.015	.05	.07	.09	.10	.11	.12	.14	.16
599.128.8J.BA.20	.020	.09	.13	.16	.18	.20	.22	.25	.28
599.128.8J.BA.25	.025	.14	.20	.24	.28	.31	.34	.40	.44
599.128.8J.BA.30	.030	.20	.28	.35	.40	.45	.49	.57	.63
599.128.8J.BA.35	.035	.28	.40	.48	.56	.63	.69	.79	.89
599.128.8J.BA.40	.040	.36	.51	.62	.72	.80	.88	1.02	1.14
599.128.8J.BA.45	.045	.45	.64	.78	.90	1.01	1.10	1.27	1.42
599.128.8J.BA.50	.050	.55	.78	.95	1.10	1.23	1.35	1.56	1.74

Notice:

The ruby orifice produces a tightly collimated solid stream for precise, predictable cutting action. The optional strainer offers a convenient way to protect against clogging caused by stray fibers or loose bits of debris in your liquid supply. The ruby orifice is permanently mounted in a brass housing. The optional strainer is 316 stainless steel.

Series 599 with Screen 099



Ordering number	Meshsize
Screen	
099.104.17.BE.05	50
099.104.17.BE.10	100
099.104.17.BE.20	200

Conversion formula for this series: $\dot{V}_2 = \dot{V}_1 \cdot \sqrt{\frac{p_2}{p_1}}$

High pressure Series 599

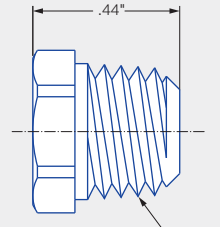
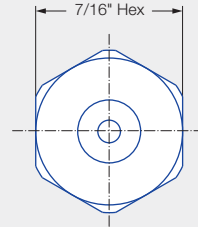


Features:

- For tight clearance installation
- Very precise, collimated stream
- Wide range of pressures
- Minimized clogging
- Facilitated cleaning
- Material 316 SS

Applications:

- Paper production
- High pressure cleaning



1/8"-27 Male NPT

Series 599

Ordering number	Orifice Diameter
599.040.17.00.15	.015" (0.38 mm)
599.040.17.00.25	.025" (0.64 mm)
599.040.17.00.31	.031" (0.79 mm)
599.040.17.00.40	.040" (1.0 mm)