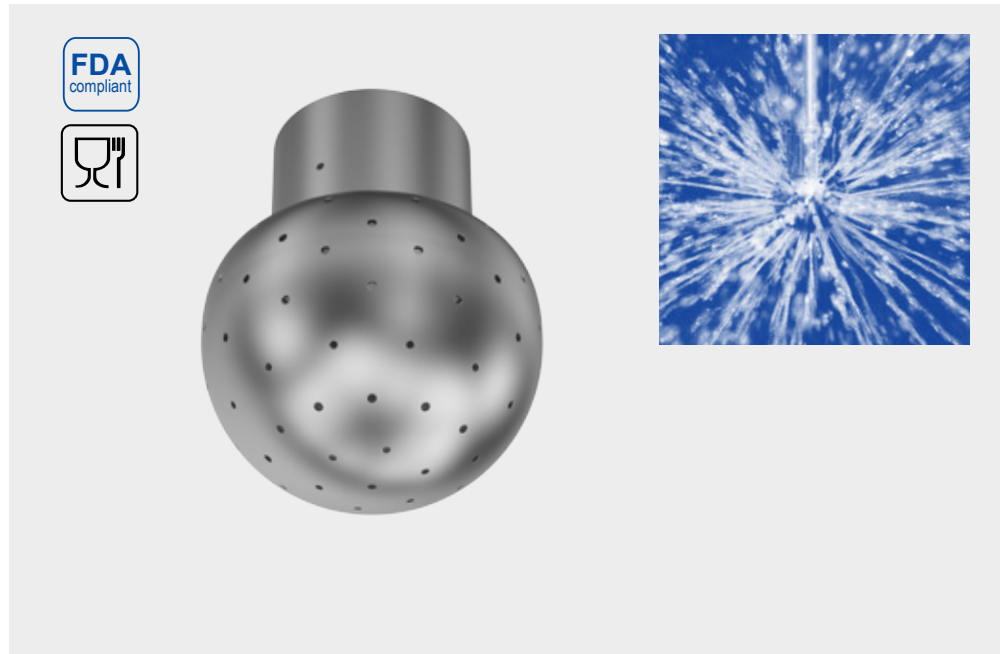




# Static spray balls »RinseClean« Series 5B2/5B3

## Series 5B2/5B3

The spray ball design has proven itself in many applications. It can be used in areas with high hygienic requirements and high temperatures. Our RinseClean spray ball is available with various slip-on connections, as well as in threaded or welded versions.

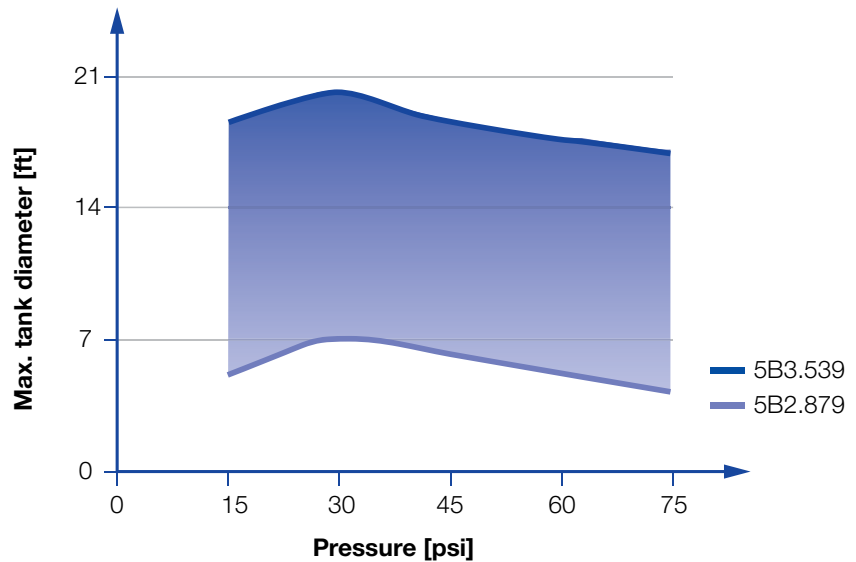


**Material**  
316L SS,  
R-clip: 316L SS

**Max. temperature**  
392 °F / 200 °C

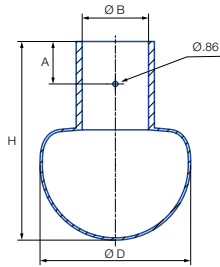
**Recommended operating pressure**  
30 psi

**Installation**  
Operation in every direction is possible



Overview of the tank diameter, depending upon the pressure of series 5B2/5B3

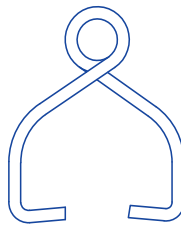
## Slip-on connection



Dimensions slip-on connection according to DIN 10357



Pin 1


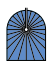


Pin 2-5

With the slip-on connection, the spray ball is pushed onto the customer's connection pipe and secured with the supplied cotter pin. Lechler offers the right connection sizes for the three most common pipe standards.

Pin	Ordering no.
1	095.013.1Y.06.55.0
2	095.013.1Y.06.58.0
3	095.013.1Y.06.56.0
4	095.013.1Y.06.59.0
5	095.013.1Y.06.57.0

## Slip-on connection according to DIN EN 10357 series D (ASME BPE 1997, OD tube compatible)

Spray angle 	Ordering no. Type	E Ø [in]	Flow Rate (Gallons per minute)					Dimensions [in]					Max. tank diameter [ft]
			20 psi	30 psi	liters per minute 2 bar	40 psi	60 psi	Ø D	Height H	Con-nection B	Distance to bore hole A	Pin	
360° 	<b>5B3.089.1Y.A1.00.0</b>	.04	10.9	13.4	50	15.5	19	1.10	1.65	0.39	.35	1	7
	<b>5B3.209.1Y.A1.90.0</b>	.06	22.0	26.9	100	31.0	38	1.10	1.65	0.76	.35	1	8
	<b>5B3.309.1Y.A1.90.0</b>	.07	39.4	48.4	180	55.9	68.4	2.52	3.31	0.76	.71	2	11
	<b>5B3.379.1Y.A2.60.0</b>	.08	57.1	69.9	260	80.7	98.8	2.52	3.31	1.01	.71	3	17
	<b>5B3.449.1Y.A3.80.0</b>	.12	89.9	110.2	410	127.2	155.8	2.52	3.31	1.51	.71	3	18
	<b>5B3.539.1Y.A5.10.0</b>	.13	147.0	180	670	207.9	254.6	3.54	4.37	2.01	.98	5	18

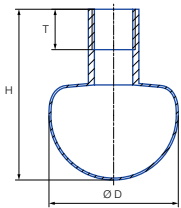
E = narrowest free cross-section

The maximum tank diameter shown above applies for the recommended operating pressure and is indicative only. The cleaning result is also affected by the type of soiling.



### Slip-on information

- Pin made of 316L SS is included.
- Depending on diameter of adapter, the flow rate can increase due to leakage between connecting pipe and static spray ball.

## Threaded connection



### Female Threaded connection

Spray angle 	Ordering no. Type	Con-nection NPT	E Ø [in]	Flow Rate (Gallons per minute)					Dimensions [in]			Max. tank diameter [ft]
				20 psi	30 psi	liters per minute 2 bar	40 psi	60 psi	Ø D	Height H	Screw-in length T	
360° 	<b>5B2.879.1Y.BB.00.0</b>	1/8"	.03	3.4	4.0	15	4.7	5.7	.79	1.5	.31	7
	<b>5B3.309.1Y.BH.00.0</b>	1/2"	.07	39.5	48.4	180	55.9	68.4	2.5	3.3	.55	11
	<b>5B3.379.1Y.BN.00.0</b>	1"	.08	57.1	69.9	260	80.7	98.8	2.5	3.3	.71	17
	<b>5B3.539.1Y.BW.00.0</b>	2"	.12	147.0	180.0	670	207.9	254.6	3.5	4.4	.94	18

E = narrowest free cross-section

The maximum tank diameter shown above applies for the recommended operating pressure and is indicative only. The cleaning result is also affected by the type of soiling.