

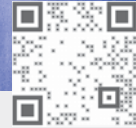
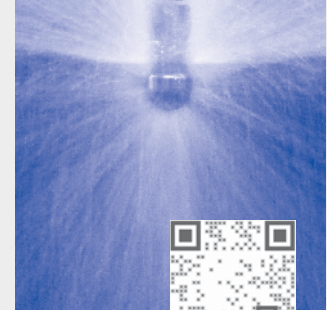


Rotating cleaning nozzle “MicroSpinner” Series 5MC

Series 5MC

The innovative slot design gives the MicroSpinner its high degree of effectiveness. Due to the modern bearing construction, it is particularly reliable and durable. The MicroSpinner is made entirely from stainless steel and designed for use also at high temperatures. Apart from stainless steel, it is also available in Hastelloy® and in many flow rates.

FDA
compliant



To see video

Scan the QR-code
or go to:
www.lechlerusa.com

	Max. tank diameter [ft]	0	5	10	15	20	25	30
--	--------------------------------	---	---	----	----	----	----	----



Materials

Stainless steel
AISI 316L,
Stainless steel
AISI 440C
Hastelloy® C22,
Hastelloy® C276



Max. temperature

284°F / 140°C



Recommended operating pressure

30 psi



Installation

Operates in every direction



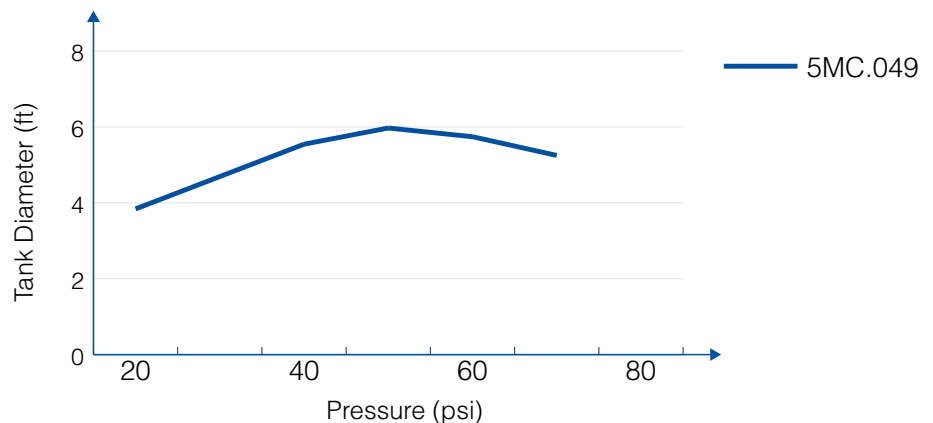
Filtration

Line strainer with a mesh size of 0.1 mm / 170 Mesh

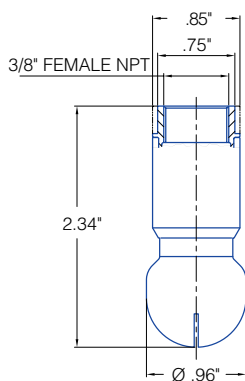


Bearing

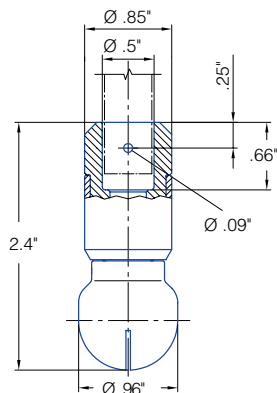
Double ball bearing made of AISI 440C
Double ball bearing made of C276



Overview of the tank diameter, depending upon the pressure of series 5MC

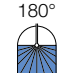
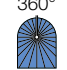


3/8" Female NPT Threaded



1/2" Female Tube Slip-on



Spray angle 	Ordering no.					Free Passage (in.)	Flow Rate (Gallons Per Minute)					Max. tank diameter [ft]
	Type	Material no.		Connection			10 psi	20 psi	liters per minute 2 bar	40 psi	60 psi	
		AISI 316L 1Y	C22* 21	3/8" Female NPT BF	1/2" OD Slip-on TF05							
60° 	5MC.022	○	○	BF	TF05	.04	3.51	5	23	7	8.6	-
	5MC. 042	○	○	BF	TF05	.118	6.2	8.8	40	12.4	15.2	-
180° 	5MC. 004	○	○	BF	TF05	.031	5.0	7.0	32	9.9	12.2	6
360° 	5MC. 049	○	○	BF	TF05	.035	6.1	8.6	39	12.1	14.8	6

* Material no. 21 (Hastelloy C22) not FDA and (EG) 1935/2004 conform

Information on operation

- Operation with compressed air purge only for short-term usage. Operation above the recommended operating pressure means higher wear and smaller droplets. This might have adverse effects on the cleaning result.

Example of ordering: Type + Material no. + Connection = Ordering no.
5MC. 042. + 1Y + BF = 5MC. 042. 1Y. BF

The maximum tank diameter shown above applies for the recommended operating pressure and is indicative only. The cleaning result is also affected by the type of soiling.

Information

- R-clip made of stainless steel AISI 316L is included (Ordering no.: 095.013.1E.05.59), Hastelloy® C22 (Ordering no.: 095.013.21.50.60).
- Depending on diameter of the adapter the flow rate can increase due to leakage between the connection and rotating cleaning nozzle.