

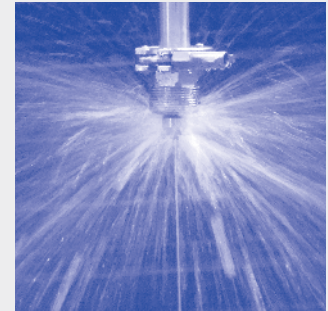


Pop-up rotating cleaning nozzles “PopUp Whirly” Series 5P2 / 5P3

NEW

Series 5P2 / 5P3

When a certain fluid pressure is reached, the rotating of the PopUp Whirly is automatically extended from the enclosure. These free-spinning rotating nozzles can be installed flush in the tank wall. They are also suitable for cleaning pipes and for applications that use foam. They are of particular interest for applications in the food and beverage industry as well as for the pharmaceutical and chemical industry.



	Max. tank diameter [ft]	0	5	10	15	20	25	30
--	--------------------------------	---	---	----	----	----	----	----



Materials

316L SS,
316Ti SS (spring),
316 SS (snap ring),
PEEK (slide-bearing),
FKM (O-ring)



Max. temperature

284°F / 140°C



Recommended operating pressure

30 psi, 5P2: opening pressure approx. 14.5 psi; closing pressure approx. 7 psi, 5P3: opening pressure approx. 13 psi, closing pressure approx. 7 psi



Installation

Operates in every direction



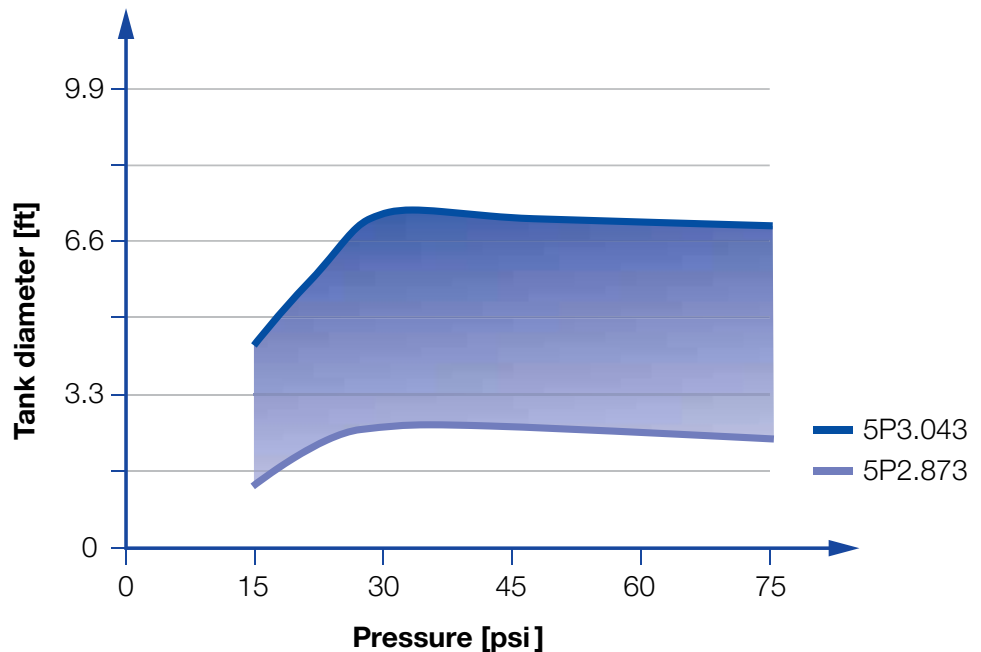
Filtration

Line strainer with a mesh size of 0.3 mm/50 Mesh



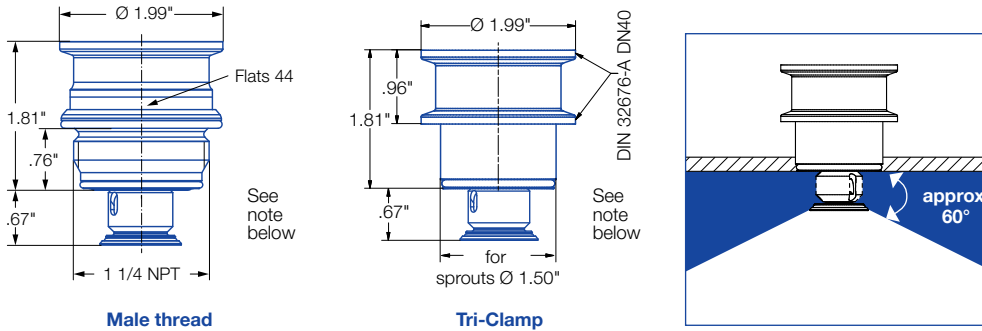
Bearing

Sleeve bearing made of PEEK



Overview of the tank diameter, depending upon the pressure of series 5P2/5P3

Series 5P2

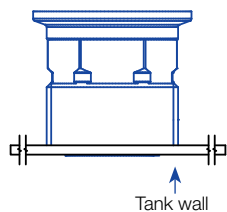


Spray angle	Ordering no.	Tank connection		Free Passage (in.)	Flow Rate (Gallons Per Minute)				Max. tank diameter [ft]
		1 1/4" Male BSPP	Tri Clamp		20 psi	30 psi	liters per minute	40 psi	
	5P2. 873. 1Y. AP	○	-	.04	3.3	4	15.0	4.7	2.6
	5P2. 873. 1Y. 00	-	○	.04	3.3	4	15.0	4.7	2.6
	5P2. 923. 1Y. AP	○	-	.04	4.4	5.4	20.0	6	3.3
	5P2. 923. 1Y. 00	-	○	.04	4.4	5.4	20.0	6	3.3

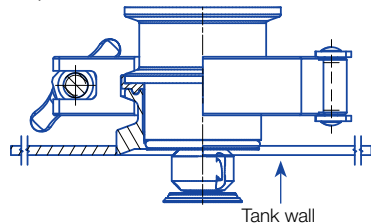
The maximum tank diameter shown above applies for the recommended operating pressure and is indicative only. The cleaning result is also affected by the type of soiling.

Nozzle installation

With thread in idle position



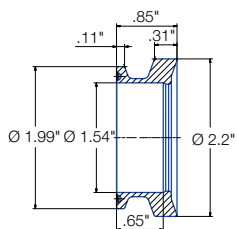
With Tri-Clamp in operating position



Information on operation

- The PopUp Whirly is not suitable for operation with compressed air or any other gas.
- Operation above the recommended operating pressure means higher wear and smaller droplets. This might have adverse effects on the cleaning result

Weld-in flange for Tri-Clamp-Version



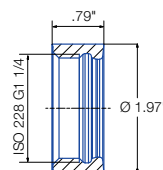
Ordering number
050.020.1Y.01.00

Material
316L SS

Information

Gasket with a thickness of .08 in must be used if the nozzle is installed with this weld-in flange. Not sold with nozzle. Use standard DIN32676-A / DN40

Weld-in socket for Thread-Version



Ordering number
050.020.1Y.AQ.00

Material
316L SS

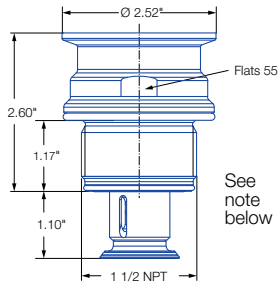
Information

The thread is hygienically sealed with 2 O-rings included in the scope of delivery.

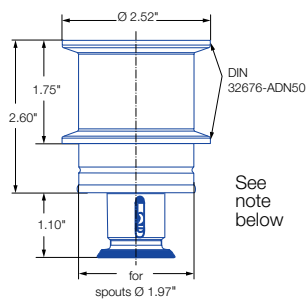


Pop-up rotating cleaning nozzles "PopUp Whirly" Series 5P2 / 5P3

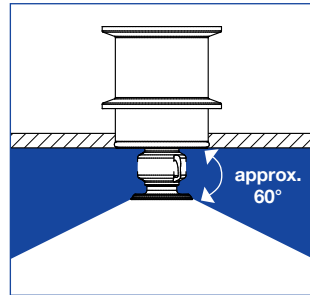
Series 5P3



Male thread



Tri-Clamp

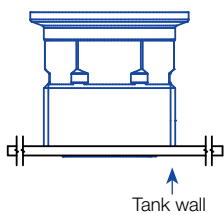


Spray angle	Ordering no.	Tank connection		Free Passage (in.)	Flow Rate (Gallons Per Minute)				Max. tank diameter [ft]
		1 1/2" Male BSSP	Tri Clamp		20 psi	30 psi	liters per minute 2 bar	40 psi	
	5P3. 043. 1Y. AR	○	-	.05	3.3	4	15.0	4.7	7.2
	5P3. 043. 1Y. 00	-	○	.05	3.3	4	15.0	4.7	7.2

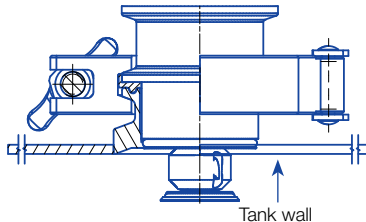
The maximum tank diameter shown above applies for the recommended operating pressure and is indicative only. The cleaning result is also affected by the type of soiling.

Nozzle installation

With thread in idle position



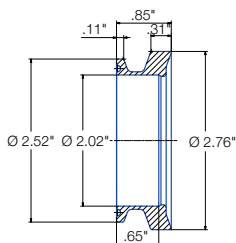
With Tri-Clamp in operating position



Information on operation

- The PopUp Whirly is not suitable for operation with compressed air or any other gas.
- Operation above the recommended operating pressure means higher wear and smaller droplets. This might have adverse effects on the cleaning result

Weld-in flange for Tri-Clamp-Version



Ordering number

050.020.1Y.01.01

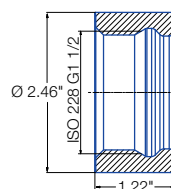
Material

316L SS

Information

Gasket with a thickness of .08 in must be used if the nozzle is installed with this weld-in flange. Not sold with nozzle. Use standard DIN32676-A / DN50

Weld-in socket for Thread-Version



Ordering number

050.020.1Y.AS.00

Material

316L SS

Information

The thread is hygienically sealed with 2 O-rings included in the scope of delivery.