

PopUp Clean Series 5P5


NEW

Series 5P5

The series PopUp Clean is used for cleaning agitators or other spray shadow areas. The tank cleaning nozzle made of high-quality materials convinces with its compact and robust design and can be installed flush with the wall.

FDA
compliant



Spray angle 	Ordering no.	Free Passage (in.)	Flow Rate (Gallons Per Minute)		
			15 psi	liters per minute 2 bar	40 psi
30°	5P5.081.1Y.00.00.0	.03	9.4	50	15.5

E = Narrowest free cross-section



Material

316L SS,
316Ti SS (spring),
316 SS (snap ring),
FKM (O-ring)



Max. temperature

203°F/95 °C



Recommended operating pressure

30-75 psi



Installation

Operation in every direction is possible



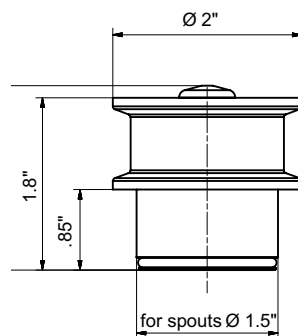
Filtration

Line strainer with a mesh size of 0.3 mm/50 mesh

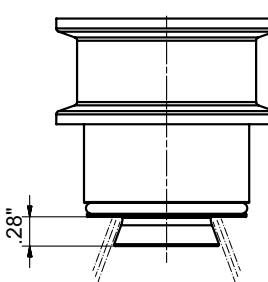
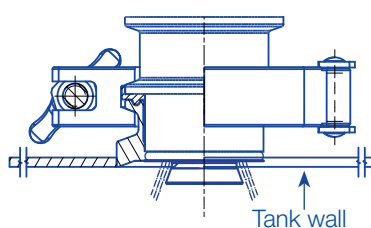
Information on operation

The PopUp Clean is not suitable for operation with compressed air or any other gas.

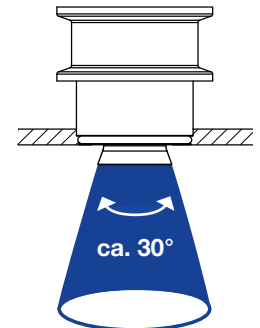
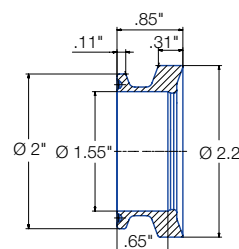
Nozzle installation



Nozzle installation



Weld-in flange



Ordering no.

050.020.1Y.01.00

Material

316L SS

Information

Gasket with a thickness of .08in must be used if the PopUp Clean is installed with this weld-in flange