

Rotating cleaning nozzle XactClean HP+ Series 5S5

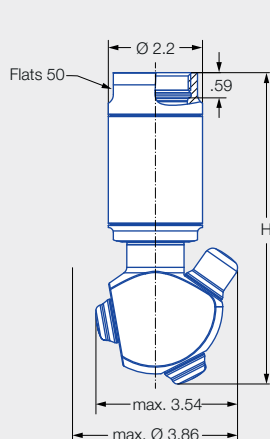


Features:

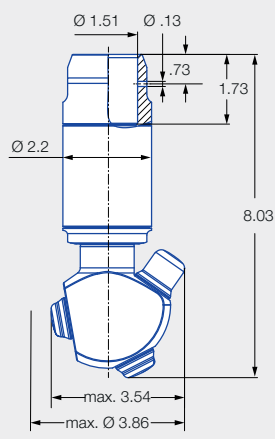
- High impact and uniform cleaning due to specially developed flat fan nozzles
- Effective cleaning of larger tanks due to higher flow rates
- High dependability and operational reliability due to robust drive unit
- Compatible with Lechler rotation monitoring sensor



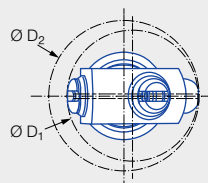
Series 5S5



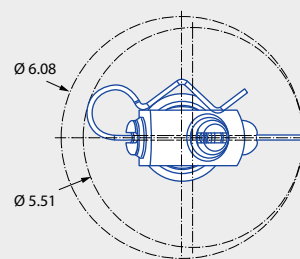
Female thread



Dimension of the slip-on connection according to ASME-BPE (OD tube)



Insertion diameter D_1 and interference circle diameter D_2 of the threaded connection



Insertion diameter and interference circle diameter of the slip-on connection

Max. tank diameter [ft]	0	10	20	30
-------------------------	---	----	----	----

Technical data:



Maximum operating temperature
302 °F



Maximum ambient temperature
302 °F



Installation
Operation in every installation position



Bearing
Double ball bearing



Material
Stainless steel 1.4404 (316L), stainless steel 1.4401 (316), PEEK, EPDM



Weight
1" 4.05 lbs
1 1/4" 3.97 lbs
1 1/2" 3.58 lbs
1 1/2" slip-on 3.97 lbs



Surface quality Outside
 $R_a \leq 0.8 \mu\text{m}$



Surface quality Inside
 $R_a \leq 1.6 \mu\text{m}$



Steam suitability
Suitable



Insertion diameter
3.19–5.51 in



Recommended filter
Line strainer with a mesh size of 0.3 mm/50 mesh



Recommended operating pressure
45 psi



Adapter
1 BSPP, 1 1/4 BSPP and 1 1/2 BSPP are compatible with HygienicFit



Rotation monitoring
Sensor-compatible, information: see pages 96–97



Maintainable

Function video






www.lechler.com/xactcleanhpplus

Or scan the QR code.





Connection		Dimensions [in]		
		L	Insertion diameter D ₁	Interference circle diameter D ₂
BN	1 NPT	7.28	3.19–3.62	3.23–3.86
BQ	1 1/4 NPT	7.28	3.19–3.62	3.23–3.86
BS	1 1/2 NPT	7.36	3.19–3.62	3.23–3.86

Spray angle	Ordering number					Narrowest free cross section Ø [in]	V̇ water [gal/min]				Max. tank diameter [ft]
	Type	Connection					p [psi] (p _{max} = 145 psi)				
		1" Female NPT	1 1/4" Female NPT	1 1/2" Female NPT	1 1/2"- Slip-on		30	45	liters per min. 3 bar	75	
	5S5.293.1Y	BN			TF15	0.12	44.31	54.27	202	70.06	29
	5S5.323.1Y	BN	BQ		TF15	0.12	53.74	65.82	245	84.97	30
	5S5.363.1Y		BQ	BS	TF15	0.12	67.12	82.21	306	106.13	31
	5S5.294.1Y	BN			TF15	0.12	44.31	54.27	202	70.06	29
	5S5.324.1Y	BN	BQ		TF15	0.12	53.74	65.82	245	84.97	30
	5S5.364.1Y		BQ	BS	TF15	0.12	67.12	82.21	306	106.13	31
	5S5.295.1Y	BN			TF15	0.12	44.31	54.27	202	70.06	29
	5S5.325.1Y	BN	BQ		TF15	0.12	53.74	65.82	245	84.97	30
	5S5.365.1Y		BQ	BS	TF15	0.12	67.12	82.21	306	106.13	31
	5S5.296.1Y	BN			TF15	0.12	44.31	54.27	202	70.06	29
	5S5.326.1Y	BN	BQ		TF15	0.12	53.74	65.82	245	84.97	30
	5S5.366.1Y		BQ	BS	TF15	0.12	67.12	82.21	306	106.13	31
	5S5.299.1Y	BN			TF15	0.12	44.31	54.27	202	70.06	29
	5S5.329.1Y	BN	BQ		TF15	0.12	53.74	65.82	245	84.97	30
	5S5.369.1Y		BQ	BS	TF15	0.12	67.12	82.21	306	106.13	31
	5S5.399.1Y		BQ	BS	TF15	0.12	80.50	98.60	367	127.29	31

BSPP thread available on request.

The maximum tank diameter applies to the recommended operating pressure and is meant as a recommendation only.
The cleaning result is also affected by the type of soiling.

Compressed air should be used for dry blowing for a short time only. Operation above the recommended operating pressure has a negative impact on the cleaning result and wear.

Information about slip-on connections

- Pin made of stainless steel 316L supplied (Ordering no.: 095.013.1Y.06.45).
- Depending on the diameter of the adapter, the flow rate can increase due to a leakage between the adapter and the rotating cleaning nozzle.

Ordering	Type	+	Code	=	Ordering no.
example:	5S5.293.1Y	+	BN	=	5S5.293.1Y.BN