

Rotating cleaning nozzle XactClean HP2 Series 5S6/5S7



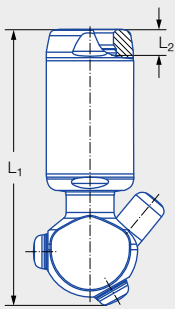
Features:

- Flat fan nozzle with high impact
- Uniform cleaning
- High efficiency due to controlled rotation
- Suitable for use with steam

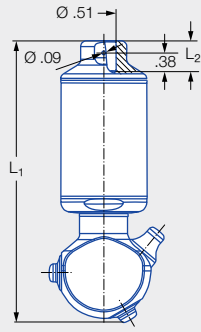


**ATEX version
available on request**

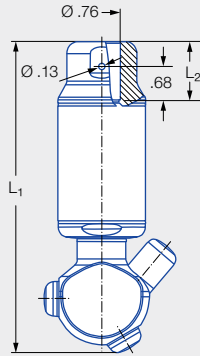
Series 5S6/5S7



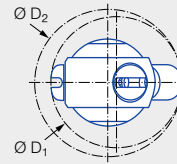
Female thread



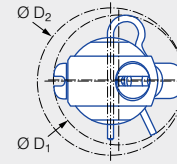
Dimensions of
1/2" slip-on connection
according to
ASME-BPE (OD tube)



Dimensions of
3/4" slip-on connection
according to
ASME-BPE (OD tube)



Insertion diameter D_1
and interference circle diameter D_2 of
the threaded connection



Insertion diameter D_1
and interference circle diameter D_2
of the slip-on connection

Max. tank diameter [ft]	0	5	10	20	25	30
-------------------------	---	---	----	----	----	----

Technical data:



Maximum operating temperature
302 °F



Maximum ambient temperature
302 °F



Installation
Operation in every installation position



Bearing
Double ball bearing



Material
Stainless steel 1.4404 (316L), PEEK, EPDM



Weight
1.43lbs - 1.98lbs



Surface quality Outside
 $R_a \leq 0.8 \mu\text{m}$



Surface quality Inside
 $R_a \leq 1.6 \mu\text{m}$



Steam suitability
Suitable



Insertion diameter
3.19–5.51 in



Recommended filter
Line strainer with a mesh size of 0.3 mm/50 mesh



Recommended operating pressure
45 psi



Adapter
3/8 BSPP, 1/2 BSPP, 3/4 BSPP and 1 BSPP are compatible with HygienicFit



Rotation monitoring
Sensor-compatible, information: see pages 96–97

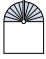



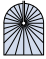


Maintainable





Connection		Dimensions [in]			
		L ₁	L ₂	Insertion diameter D ₁	Interference circle diameter D ₂
BF	3/8 NPT	5.55	0.35	1.97–2.60	1.97–2.64
BH	1/2 NPT	5.63	0.51	1.97–2.91	1.97–2.99
BL	3/4 NPT	5.63	0.52	1.97–3.11	1.97–3.19
BN	1 NPT	5.51	0.65	2.01–3.11	2.09–3.15
TF05	1/2" slip-on connection	5.91	0.63	2.05–2.60	1.97–2.64
TF07	3/4" slip-on connection	6.30	1.18	2.60–3.11	1.97–3.19

Spray angle	Order number							Narrowest cross-section Ø [in]	V̇ water [gal/min]					Max. tank diameter [ft]
	Type	Connection							p [psi] (p _{max} = 217 psi)					
		3/8" Female NPT	1/2" Female NPT	3/4" Female NPT	1" Female NPT	1/2" slip-on	3/4" slip-on		30	45	Liters per min. 3 bar	75	145	
180° 	5S6.963.1Y	BF	BH				TF05	0.07	6.80	8.33	31	10.75	14.95	11
	5S7.043.1Y		BH				TF07	0.08	10.97	13.43	50	17.34	24.11	13
	5S7.113.1Y		BH	BL			TF07	0.08	16.01	19.61	73	25.32	35.20	19
	5S7.183.1Y			BL			TF07	0.08	23.91	29.28	109	37.80	52.56	23
	5S7.223.1Y			BL			TF07	0.08	29.83	36.54	136	47.17	65.59	24
	5S7.253.1Y			BL	BN		TF07	0.08	36.19	44.33	165	57.23	79.57	26
180° 	5S6.964.1Y	BF	BH				TF05	0.07	6.80	8.33	31	10.75	14.95	11
	5S7.044.1Y		BH				TF07	0.08	10.97	13.43	50	17.34	24.11	13
	5S7.114.1Y		BH	BL			TF07	0.08	16.01	19.61	73	25.32	35.20	19
	5S7.184.1Y			BL			TF07	0.08	23.91	29.28	109	37.80	52.56	23
	5S7.224.1Y			BL			TF07	0.08	29.83	36.54	136	47.17	65.59	24
	5S7.254.1Y			BL	BN		TF07	0.08	36.19	44.33	165	57.23	79.57	26
270° 	5S6.965.1Y	BF	BH				TF05	0.07	6.80	8.33	31	10.75	14.95	11
	5S7.045.1Y		BH				TF07	0.08	10.97	13.43	50	17.34	24.11	13
	5S7.115.1Y		BH	BL			TF07	0.08	16.01	19.61	73	25.32	35.20	19
	5S7.185.1Y			BL			TF07	0.08	23.91	29.28	109	37.80	52.56	23
	5S7.225.1Y			BL			TF07	0.08	29.83	36.54	136	47.17	65.59	24
	5S7.255.1Y			BL	BN		TF07	0.08	36.19	44.33	165	57.23	79.57	26
270° 	5S6.966.1Y	BF	BH				TF05	0.07	6.80	8.33	31	10.75	14.95	11
	5S7.046.1Y		BH				TF07	0.08	10.97	13.43	50	17.34	24.11	13
	5S7.116.1Y		BH	BL			TF07	0.08	16.01	19.61	73	25.32	35.20	19
	5S7.186.1Y			BL			TF07	0.08	23.91	29.28	109	37.80	52.56	23
	5S7.226.1Y			BL			TF07	0.08	29.83	36.54	136	47.17	65.59	24
	5S7.256.1Y			BL	BN		TF07	0.08	36.19	44.33	165	57.23	79.57	26
360° 	5S6.969.1Y	BF	BH				TF05	0.06	6.80	8.33	31	10.75	14.95	11
	5S7.049.1Y		BH				TF07	0.08	10.97	13.43	50	17.34	24.11	13
	5S7.119.1Y		BH	BL			TF07	0.08	16.01	19.61	73	25.32	35.20	19
	5S7.189.1Y			BL			TF07	0.08	23.91	29.28	109	37.80	52.56	23
	5S7.229.1Y			BL			TF07	0.08	29.83	36.54	136	47.17	65.59	24
	5S7.259.1Y			BL	BN		TF07	0.08	36.19	44.33	165	57.23	79.57	26

BSPP thread available on request.

The maximum tank diameter applies to the recommended operating pressure and is meant as a recommendation only.

The cleaning result is also affected by the type of soiling.

Compressed air should be used for dry blowing for a short time only. Operation above the recommended operating pressure has a negative impact on the cleaning result and wear.

Information about slip-on connections

- Pin made of stainless steel 316L supplied (Ordering no.: 095.013.1Y.06.45).
- Depending on the diameter of the adapter, the flow rate can increase due to a leakage between the adapter and the rotating cleaning nozzle.