

Rotating cleaning nozzle Whirly 2 Series 5W9



Features:

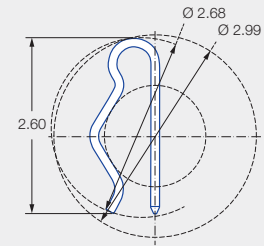
- Popular and proven design
- Cleaning with effective flat jets
- Various connection options
- Available with a wide range of flow rates and spray angles



ATEX version available on request

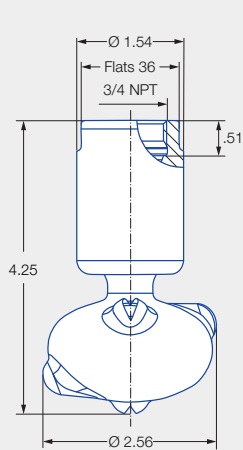


FDA

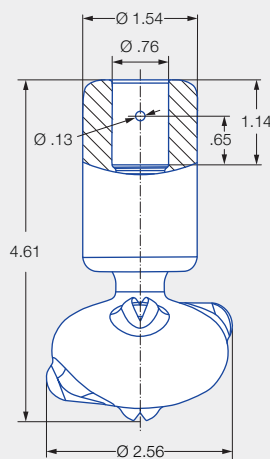


Dimensions slip-on connection top view

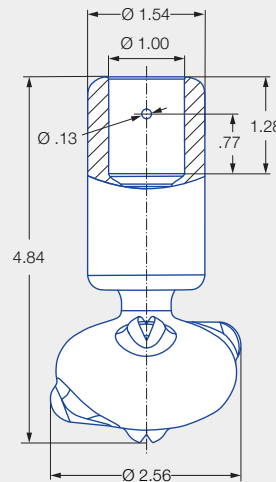
Series 5W9



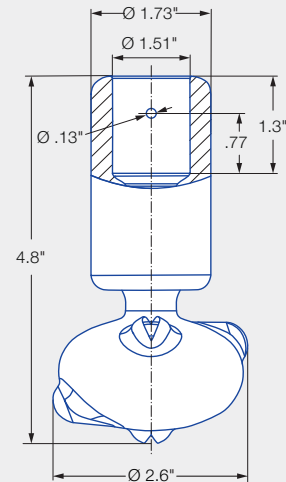
Female thread



Dimensions slip-on connection according to ASME-BPE (OD-tube)



Dimensions slip-on connection according to ASME-BPE (OD-tube)



Dimensions slip-on connection according to ASME-BPE (OD-tube)

	Max. tank diameter [ft]	0	5	10	15	20	25
--	--------------------------------	---	---	----	----	----	----

Technical data:



Maximum operating temperature
302 °F
203 °F (ATEX)



Maximum ambient temperature
392 °F
284 °F (ATEX)



Installation
Operation in every installation position



Bearing
Double ball bearing made of stainless steel



Material
Stainless steel 1.4404 (316L), PEEK



Weight

3/4" threaded	0.66 lbs
3/4" slip-on	0.88 lbs
1" slip-on	1.10 lbs
1 1/2" slip-on	2.05 lbs



Surface quality
Ra ≤ 0.4 µm
OUTSIDE



Surface quality
Ra ≤ 0.8 µm
INSIDE



Steam suitability
Not suitable



Insertion diameter
2.74 in



Recommended filter
Line strainer with a mesh size of 0.1 mm/170 mesh



Recommended operating pressure
30 psi






Adapter
3/4 BSPP is compatible with HygienicFit

Function video
www.lechler.com/de-en/medialibrary
Or scan the QR Code.





Spray angle	Ordering number					Narrowest free cross section Ø [in]	V̇ water [gal/min]				Max. tank diameter [ft]
	Type	Connection					p [psi] (p _{max} = 87 psi)				
		3/4" Female NPT	3/4" Slip-on	1" Slip-on	1.5" Slip-on		15	30	Liters per min. 2 bar	45	
270° 	5W9.075.1Y	BL	TF07	TF10	TF15	0.08	9.12	12.90	48	15.79	6
	5W9.145.1Y	BL	TF07	TF10	TF15	0.11	13.49	19.07	71	23.36	7
	5W9.195.1Y	BL	TF07	TF10	TF15	0.13	18.43	26.06	97	31.92	8
270° 	5W9.076.1Y	BL	TF07	TF10	TF15	0.08	9.12	12.90	48	15.79	6
	5W9.106.1Y	BL	TF07	TF10	TF15	0.10	11.02	15.58	58	19.08	7
	5W9.196.1Y	BL	TF07	TF10	TF15	0.13	18.43	26.06	97	31.92	8
360° 	5W9.079.1Y	BL	TF07	TF10	TF15	0.06	9.12	12.90	48	15.79	6
	5W9.149.1Y	BL	TF07	TF10	TF15	0.09	13.49	19.07	71	23.36	7
	5W9.199.1Y	BL	TF07	TF10	TF15	0.12	18.43	26.06	97	31.92	8
	5W9.279.1Y	BL	TF07	TF10	TF15	0.14	27.55	38.95	145	47.71	10

BSPP thread available on request.

The maximum tank diameter applies to the recommended operating pressure and is meant as a recommendation only. The cleaning result is also affected by the type of soiling.

Compressed air should be used for dry blowing for a short time only. Operation above the recommended operating pressure has a negative impact on the cleaning result and wear.

Information about slip-on connections

- Pin made of stainless steel 316L supplied (Ordering no.: 095.013.1Y.06.72.0).
- Depending on the diameter of the adapter, the flow rate can increase due to a leakage between the adapter and the rotating cleaning nozzle.
- Minimum insertion diameter (with mounted pin) is 2.68 in.

Ordering	Type	+	Code	=	Ordering no.
example:	5W9.075.1Y	+	BL	=	5W9.075.1Y.BL